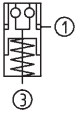


No. 6217EARHA20

Installation clamping module

Hydraulic opening.
 Pneumatic blow-out.
 Opening operating pressure: min. 60 - max. 70 bar
 Cover and piston hardened.
 Repetition accuracy < 0.005 mm.



NEW!

Order no.	Size	Pull-in/locking force up to	Holding force*	Blow out	Weight
		[kN]	[kN]		
561990	K20.4	30	55	●	1,7

Design:

Zero-point clamping system with increased pull-in/locking force and centric blow-out.

Application:

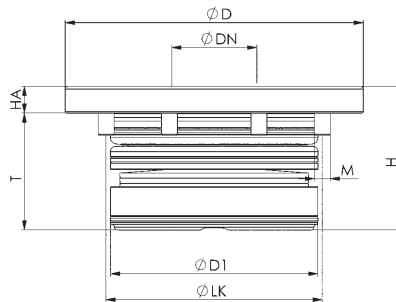
Zero-point clamping system for set-up-time-optimised clamping during cutting and non-cutting machining.

Note:

The installation clamping module has high holding, pull-in and locking forces. This is opened hydraulically (1) and mechanically locked through spring force. Subsequent uncoupling of the pressure lines is possible at any time (module is clamped pressure-free).
 The clamping module with blow-out and support control has two connections:
 1x hydr. opening (1), 1x pneum. Blow-out and support control (3). (The pneumatic blow-out and support control can optionally be connected.)
 * Please observe the installation instructions.

On request:

- Installation drawings



Dimensions:

Order no.	Size	dia. D	dia. DN	dia. D1	H	HA	dia. LK	M	T
561990	K20.4	112	32	78	54	10	88	M6	44