

## No. 6370ZN-10

### K10 pull-stud for M8 engagement screw

Hardened, for clamping modules size K10.



Order no.	Size	dia. DN	dia. D1	dia. D2	H	H1	M	T	Weight [g]
303610	K10	22,0	15	8	19	16	-	3	30
303636	K10	22,0	15	8	19	16	-	3	30
304519	K10	21,8	15	8	19	16	-	3	30
304535	K10	21,8	-	-	-	-	M 8	-	30

#### Design:

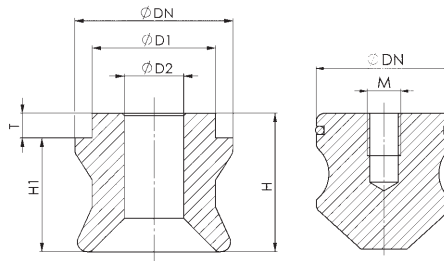
Order no. 303610: zero point pull-stud, order no. 303636: timing pull-stud, order no. 304519: undersize pull-stud, order no. 304535: protection pull-stud

#### Note:

The timing pull-stud has an additional alignment bore, which can optionally be used for simple installation.

#### On request:

Protection pull-stud made of plastic.



## No. 6370ZNR-10

### Pull-stud K10 for engagement screw M8 with reduced fitting collar

Hardened, for clamping modules size K10.



**NEW!**



Order no.	Size	dia. DN	dia. D1	dia. D2	H	H1	M	T	Weight [g]
562748	K10	22,0	14,5	8	19	16	-	3	27
562750	K10	22,0	14,5	8	19	16	-	3	27
562751	K10	21,8	14,5	8	19	16	-	3	27
304535	K10	21,8	-	-	-	-	M 8	-	30

#### Design:

Order no. 562748: zero point pull-stud, order no. 562750: timing pull-stud, order no. 562751: undersize pull-stud, order no. 304535: protection pull-stud

#### Application:

For clamping in a fitting hole with a reduced diameter e.g. before heat treatment of a workpiece. After the boring out the hole, the respective standard pull-stud can be used.

#### Note:

The timing pull-stud has an additional alignment bore, which can optionally be used for simple installation.

#### On request:

Protection pull-stud made of plastic.

## No. 6370ZN-10

### K10 pull-stud with colour coding for M8 engagement screw

Hardened, for clamping modules size K10.



Order no.	Size	dia. DN	dia. D1	dia. D2	H	H1	T	Weight [g]
430280	K10	22,0	15	8	19	16	3	30
430306	K10	22,0	15	8	19	16	3	30

#### Design:

Extremely wear-resistant surface coating. Order no. 430280: zero point pull-stud „Gold“, order no. 430306: timing pull-stud „Black“.

#### Application:

For simple, visual differentiation of the various pull-studs.

#### Note:

The timing pull-stud has an additional alignment bore, which can optionally be used for simple installation.