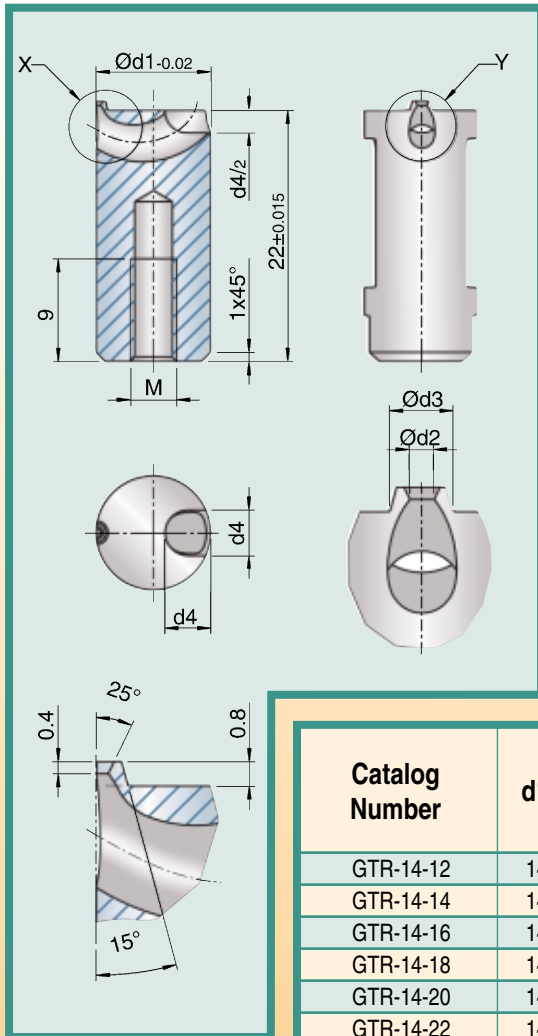




Cashew Gate Inserts

Ø 14mm

For shot weights up to 100g



Actual Size

External View

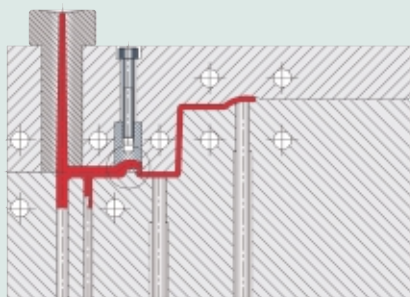
Cutaway View

- Manufactured in a solid one-piece unit using the Metal Injection Molding (MIM) process.
- Optimal balancing of cavity filling due to the exactness of MIM.
- Hardened to 60HRC and polished.
- Anti-rotation locking molded into all round inserts. However in most cases the insert is adequately held by the capscrew.

Catalog Number	d1	d2	d3	d4	M	Viscosity		
						high flowability	regular flowability	low flowability
GTR-14-12	14	1,2	2,5	6	6	20	16	10
GTR-14-14	14	1,4	2,7	6	6	30	23	15
GTR-14-16	14	1,6	2,9	6	6	40	30	20
GTR-14-18	14	1,8	3,1	6	6	54	40	27
GTR-14-20	14	2,0	3,3	6	6	68	52	34
GTR-14-22	14	2,2	3,5	6	6	85	65	43
GTR-14-24	14	2,4	3,7	6	6	100	80	50

Weight in grams

Installation Example

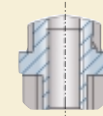
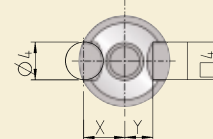


Nozzle Side Installation

The cashew gate insert is screwed into the nozzle side of the mold. The front of the gate insert is sealed off by the cavity.

- to reduce pressure loss
- to minimize shear

Anti-Rotation Locking Dimensions



Catalog Series	Parallel Pin distance 'X'	Key distance 'Y'
GTR-14	6,0 mm	4,5 mm

CAD files available at:
www.exaflow.com

