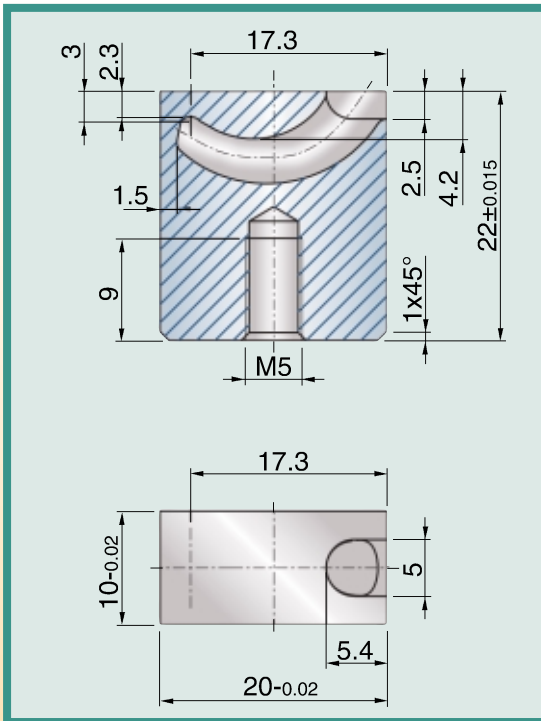


# Cashew Gate Inserts

## Kontourflow® GTK



External View

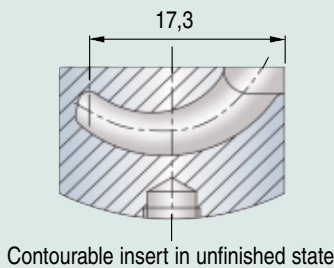


Cutaway View

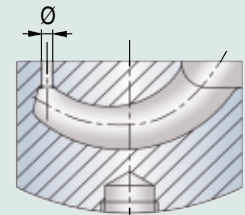
For tunnel gating of small to medium sized moldings contoured in the gate area

- maximum gate diameter (pointed tunnel) up to 1,7 mm.
- contourable up to 3 mm depth.
- usable for all thermoplastics including fillers up to 50% glass fibre.

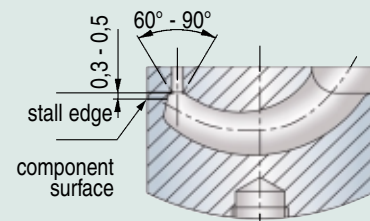
### Standard Design



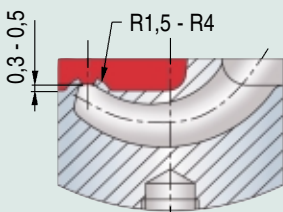
Contourable insert in unfinished state



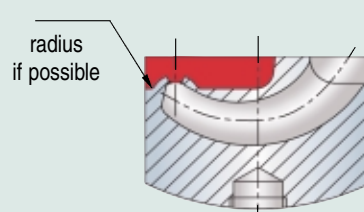
Diameter to be defined in accordance with the table



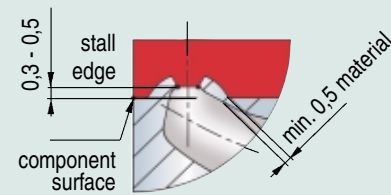
Define 60° to 90° angle at bore/tunnel intersection point



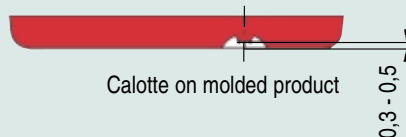
Calotte wall thickness to be min. 0,5 < max. 0,7 mm



Provide radius if possible



Finished calotte configuration



Calotte on molded product

CAD files available at:  
[www.exaflow.com](http://www.exaflow.com)

