

No. 6966R

Clamping lever blank



CAD

| Order no. | Article no. | Span H max. [mm] | A | B | C | E | Weight [g] |
|-----------|-------------|---------------------|----|----|----|----|---------------|
| 562216 | 6966R-01-00 | 8 | 61 | 24 | 15 | 52 | 559 |

NEW!



Design:

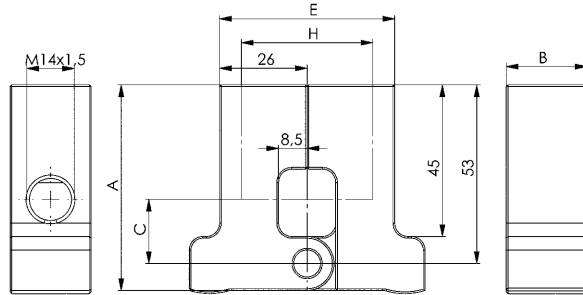
Case-hardened steel, burnished.

Application:

For clamping tongs 6966-01. The clamping lever blank can be adjusted according to the shape of the workpiece.

Note:

The span H can be increased as required, but it must be noted that shear forces of more than 8 mm can occur!



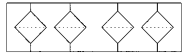
No. 6966DF

Filter plate



CAD

| Order no. | Article no. | max. pressure range [bar] | Filtration [µm] | OR-1 O-ring Order No. | Weight [g] |
|-----------|---------------|------------------------------|--------------------|-----------------------------|---------------|
| 562218 | 6966DF-07-100 | 250 | 100 | 466334 | 320 |



NEW!



Design:

Filter plate and filter sleeve made of aluminium, black anodised. Filter plates made of metal mesh.

Application:

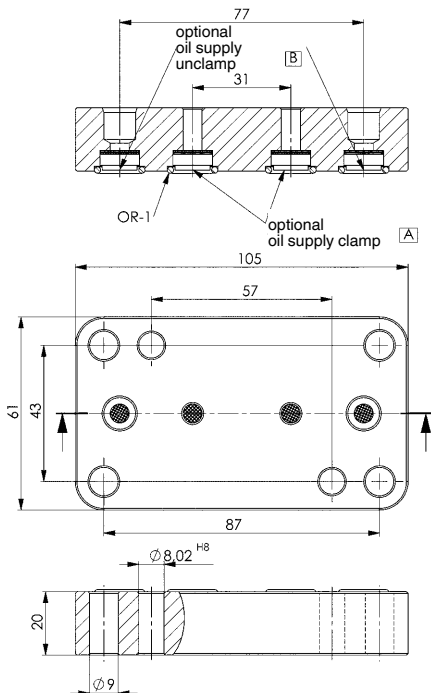
Used to protect the 6966D-07 clamp from contamination in clamping devices

Note:

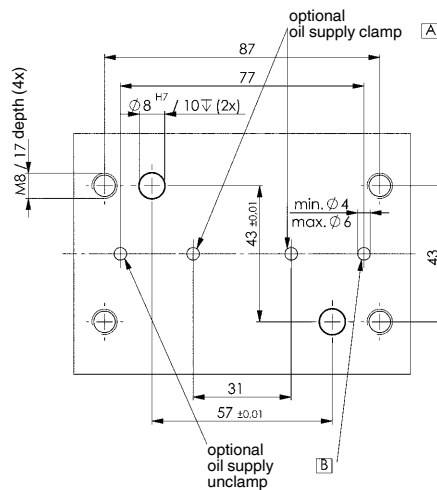
If a finer strainer is required, this can be easily replaced. The finer the filter selected, the greater the flow resistance.

Replacement filter:

- Filter, plug-in design 25 µm, order no. 562203
- Filter, plug-in design 40 µm, order no. 562204
- Filter, plug-in design 100 µm, order no. 562205



Drilling template device:



Subject to technical alterations.