

No. 6208MD

Double clamping module, mechanical

Mechanical opening and closing.
Tempered steel, plasma-nitrided and burnished.
Repetition accuracy < 0.01 mm.

Order no.	Size	Pull-in/locking force up to	Holding force*	Tightening torque	Weight
		[kN]	[kN]	[Nm]	[Kg]
559681	K10	6	25	30	1,6
562356	K20	10	55	30	5,1

Application:

Mechanical „double clamping module“ for setting time-optimised clamping during cutting and non-cutting machining. Especially suitable for the modular design of clamping solutions via zero point clamping system.

Note:

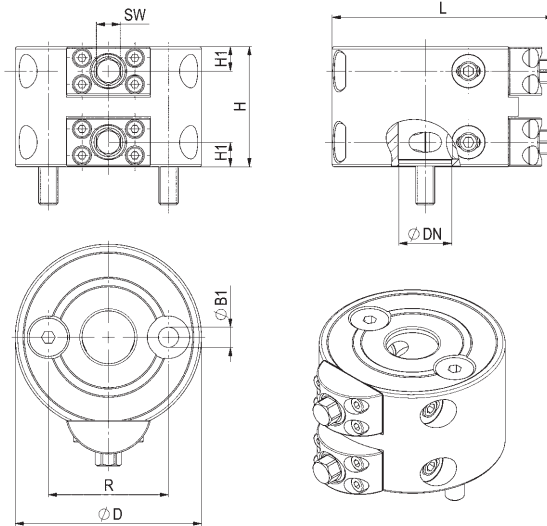
This clamping system combines two separately operable mechanical zero-point clamping systems. In conjunction with the pull-stud for T-slots, this clamping module is simply and quickly fastened to the machine table via clamping slots. Additional height adapters, workpieces or fixtures can be fastened to the top with pull-studs.

Pull-stud: The K10 and K20 versions of the pull-studs are used with this mechanical clamping module. The zero point, sword or undersize pull-stud can be used, depending on the application.

The fastening bolts are supplied as standard.

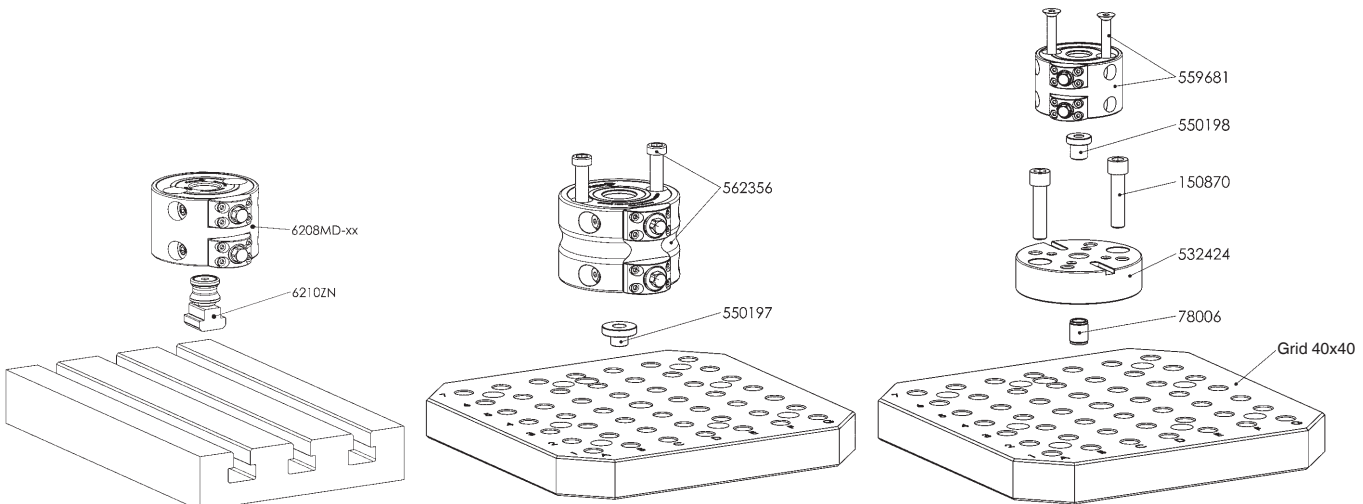
This clamping module can be used at ambient temperatures of up to max. 200°C.

* Please observe the installation instructions.



Dimensions:

Order no.	Size	dia. B1	dia. D	dia. DN	H ±0.01	H1	L	R	SW
559681	K10	9,0	77,5	22	50	10,2	92	50	10
562356	K20	13,5	112,0	32	80	15,0	132	80	13



Subject to technical alterations.