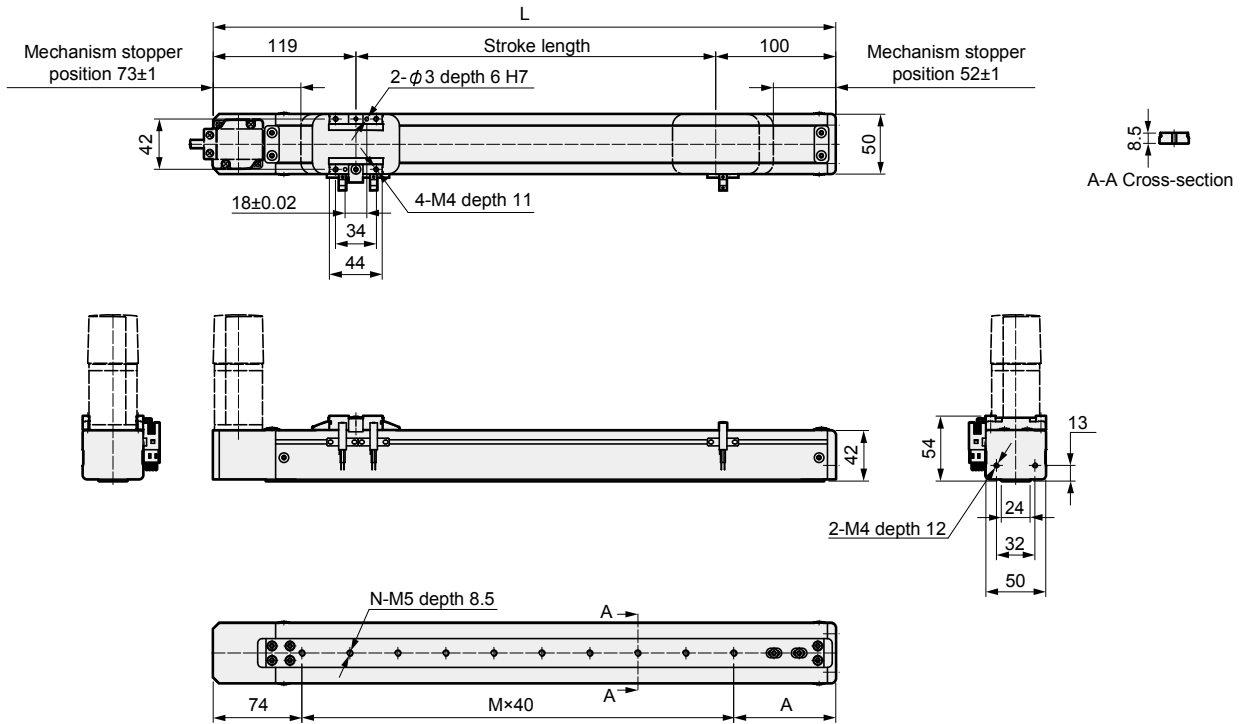


Dimensions (ETV-05)

- ETV-05-**-U (Motor installation methods: Upper installation)

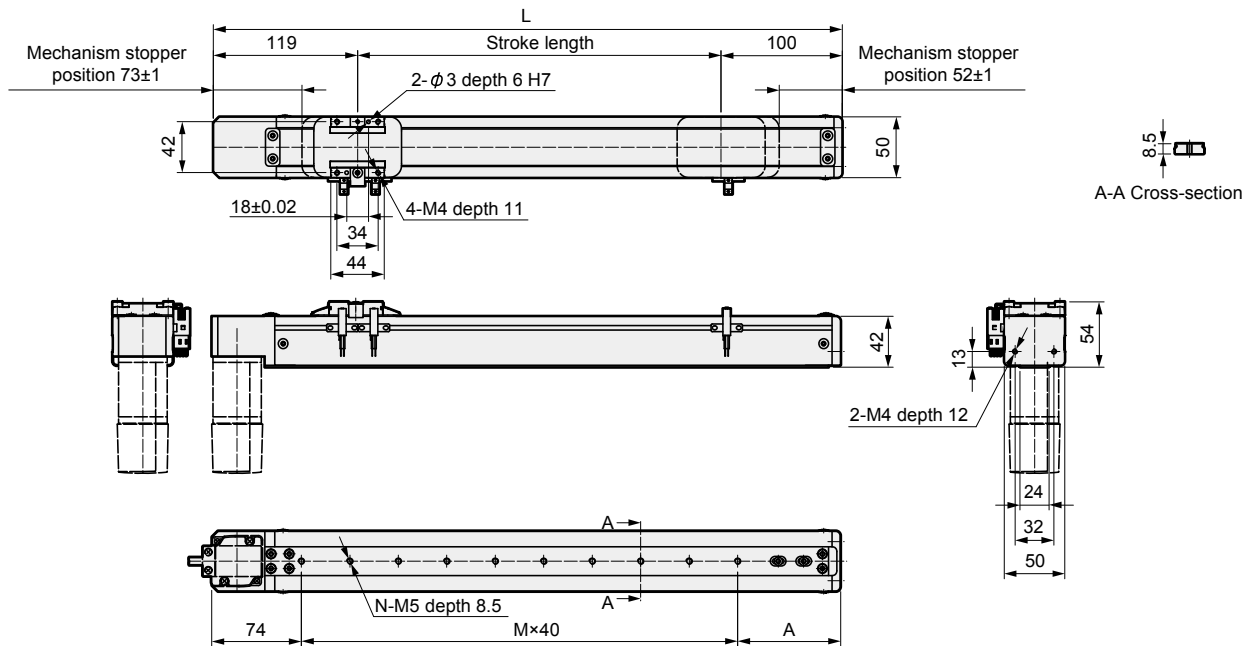


Note: Refer to page 6 for motor installation part dimensions.

Stroke length (mm)	100	150	200	250	300	350	400	450	500	550	600	650	700	750	800
L	319	369	419	469	519	569	619	669	719	769	819	869	919	969	1019
A	85	95	65	75	85	95	65	75	85	95	65	75	85	95	65
M	4	5	7	8	9	10	12	13	14	15	17	18	19	20	22
N	5	6	8	9	10	11	13	14	15	16	18	19	20	21	23
Weight (kg)	2.2	2.3	2.4	2.5	2.7	2.8	2.8	3.0	3.1	3.2	3.3	3.4	3.5	3.6	3.7

Dimensions (ETV-05)

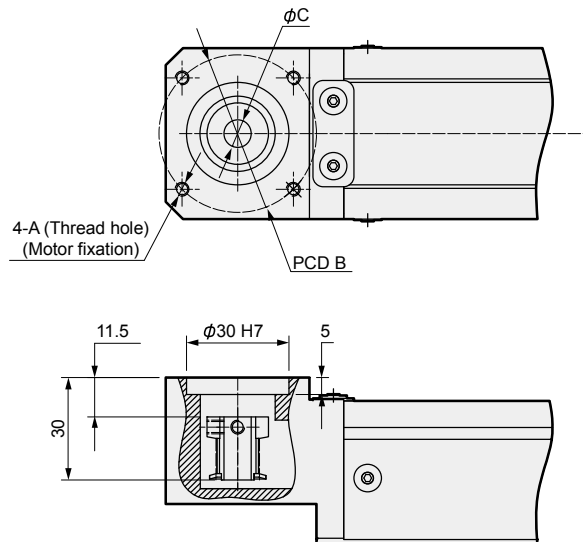
- ETV-05-**-D (Motor installation methods: Lower installation)



Stroke length (mm)	100	150	200	250	300	350	400	450	500	550	600	650	700	750	800
L	319	369	419	469	519	569	619	669	719	769	819	869	919	969	1019
A	85	95	65	75	85	95	65	75	85	95	65	75	85	95	65
M	4	5	7	8	9	10	12	13	14	15	17	18	19	20	22
N	5	6	8	9	10	11	13	14	15	16	18	19	20	21	23
Weight (kg)	2.2	2.3	2.4	2.5	2.7	2.8	2.8	3.0	3.1	3.2	3.3	3.4	3.5	3.6	3.7

Motor installation part Dimensions (ETV-05)

- ETV-05-U/D



ETV-05-U/D					
Installation motor specifications		A	B	C	Motor screw
M	100W	M4	φ46	φ8	4-M4×L12
Y	100W	M4	φ46	φ8	4-M4×L12
P	100W	M3	φ45	φ8	4-M3×L12