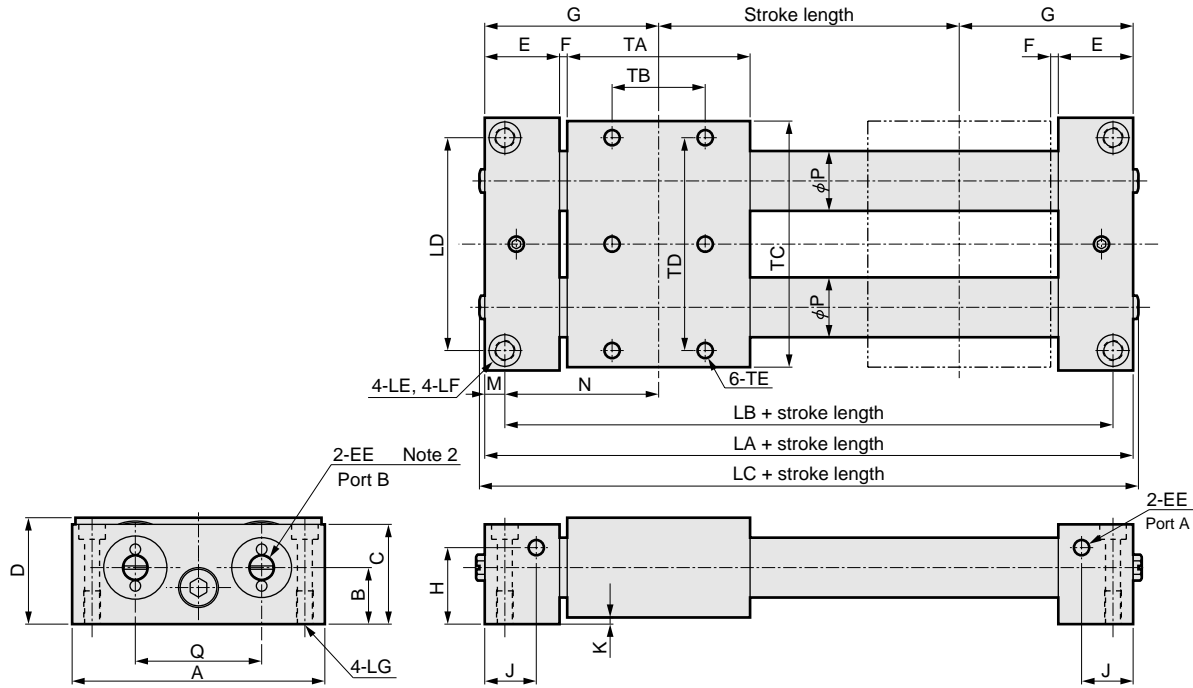




Dimensions: MRL2-G (simplified guide type, 1 piston) / MRL2-W (simplified guide type, 2 piston)

- MRL2-G (simplified guide type 1 piston) without switch
- MRL2-W (simplified guide type 2 piston) without switch



Note: Air piping port A, B can be selected.
 A plug is assembled to Port B at shipment.
 · $\phi 6$ to $\phi 20$: Plug (FPL-M5)
 · $\phi 25$, $\phi 32$: Hexagon socket head tapered screw plug

Note 2: MRL2-W is "4-EE".

Symbol	Dimensions					Installation dimensions								
	Bore size (mm)	LA	LC	A	C	D	LB	LD	LE	LF	LG	TB	TD	TE
SRL2	$\phi 6$	74	80.2	46	20	24	68	40	$\phi 3.5$	-	M4 depth 6	20	38	M3 depth 4.5
SRG	$\phi 10$	83	86.2	64	24	26	74	54	$\phi 4.5$	$\phi 8$ spot face depth 4.4	M5 depth 10	20	55	M4 depth 6
SRM	$\phi 16$	105	108.2	76	30	32	93	64	$\phi 5.5$	$\phi 9.5$ spot face depth 5.4	M6 depth 12	28	64	M5 depth 8
SRT	$\phi 20$	131	134.2	90	36	38	119	77	$\phi 6.9$	$\phi 11$ spot face depth 6.5	M8 depth 12	44	78	M5 depth 8
MRL2	$\phi 25$	136	136	108	45	48	122	90	$\phi 6.9$	$\phi 11$ spot face depth 6.5	M8 depth 12	40	90	M6 depth 9
MRG2	$\phi 32$	144	144	126	53	56	130	108	$\phi 6.9$	$\phi 11$ spot face depth 6.5	M8 depth 12	40	104	M6 depth 9

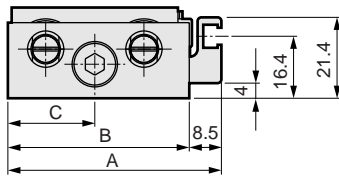
Symbol	General dimensions														
	Bore size (mm)	B	E	EE	F	G	H	J	K	M	N	P	Q	TA	TC
CAC3	$\phi 6$	13	15	M5 depth 4	2	37	9	9.5	2	3	34	7.6	26	40	44
UCAC	$\phi 10$	14	19.5	M5 depth 4	2	41.5	5.5	11.5	2	4.5	37	12	34	40	62
RCC2	$\phi 16$	17	22.5	M5 depth 4	2.5	52.5	23	15.5	2	6	46.5	18	38	55	74
MFC	$\phi 20$	20	25.5	M5 depth 4	3	65.5	28	17	2	6	59.5	23	46	74	88
SHC	$\phi 25$	25.5	30	Rc1/8	3	68	29	20	3	7	61	28	50	70	101
GLC	$\phi 32$	29.5	30	Rc1/8	3	72	37	20	3	7	65	35	60	78	119

Dimensions: MRL2-G (simplified guide type, 1 piston) / MRL2-W (simplified guide type, 2 piston)

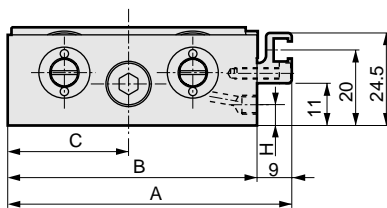
- MRL2-GL (simplified guide type 1 piston) with switch
- MRL2-WL (simplified guide type 2 piston) with switch



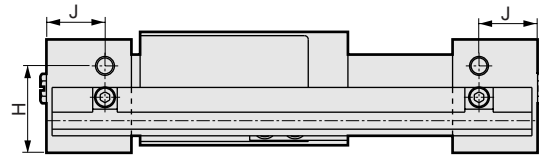
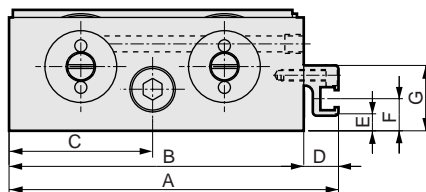
- For $\phi 6$



- For $\phi 10$



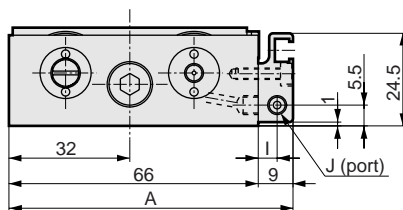
- For $\phi 16$ to $\phi 32$



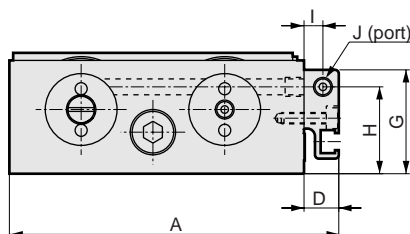
Symbol	A	B	C	D	E	F	G	H	J
Bore size (mm)									
$\phi 6$	56.5	48	23	-	-	-	-	9	9.5
$\phi 10$	75	66	32	-	-	-	-	5.5	11.5
$\phi 16$	87	78	38	9	4	8.5	17.3	23	15.5
$\phi 20$	101	92	45	9	9	13.5	22.3	28	17
$\phi 25$	116.7	108	54	8.7	2	7.5	21	29	20
$\phi 32$	134.7	126	63	8.7	10	15.5	29	37	20

- MRL2-GL-*R (simplified guide type 1 piston) common porting type with switch
- MRL2-WL-*R (simplified guide type 2 piston) common porting type with switch

- For $\phi 10$



- For $\phi 16$ to $\phi 32$



Symbol	A	D	G	H	I	J
Bore size (mm)						
$\phi 10$	75	-	-	-	5	M5 depth 4
$\phi 16$	87	9	27.5	23	5	M5 depth 4
$\phi 20$	101	9	32.5	28	5	M5 depth 4
$\phi 25$	122	14	45	29	7.5	Rc1/8
$\phi 32$	140	14	53	37	7.5	Rc1/8

SCP*2
CMK2
CMA2
SCM
SCG
SCA2
SCS
CKV2
CA/OV2
SSD
CAT
MDC2
MVC
SMD2
MSD*
FC*
STK
ULK*
JSK/M2
JSG
JSC3
USSD
USC
JSB3
LMB
STG
STS/L
LCS
LCG
LCM
LCT
LCY
STR2
UCA2
HCM
HCA
SRL2
SRG
SRM
SRT
MRL2
MRG2
SM-25
CAC3
UCAC
RCC2
MFC
SHC
GLC
Ending

Magnet type rodless cylinder
Rodless type