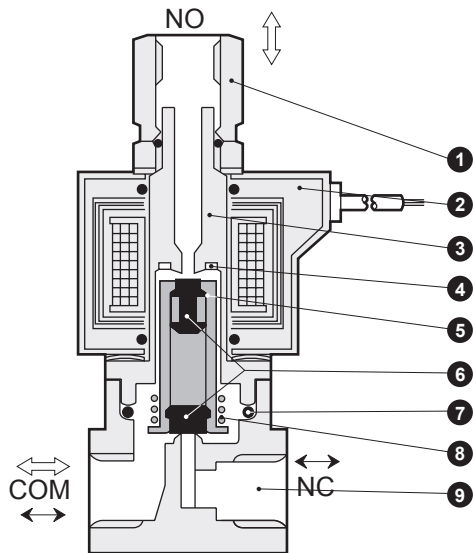


AG31/41 Series

- EXA
- FWD
- HNB/G
- USB/G
- FAB/G
- FGB/G
- FVB
- FWB/G
- FHB
- FLB
- AB
- AG**
- AP/AD
- APK/ADK
- For dry air
- Explosion proof
- HVB/HVL
- S^ΔB/NAB
- LAD/NAD
- Related components for water
- NP/NAP/NVP
- CHB/G
- MXB/G
- Others Valve
- Dust collecting
- CVE/CVSE
- CCH, CPE/D
- Medical analysis
- Gas combustion
- Automatic watering
- Custom order product
- Ending

Internal structure and parts list

● AG31/41 Series



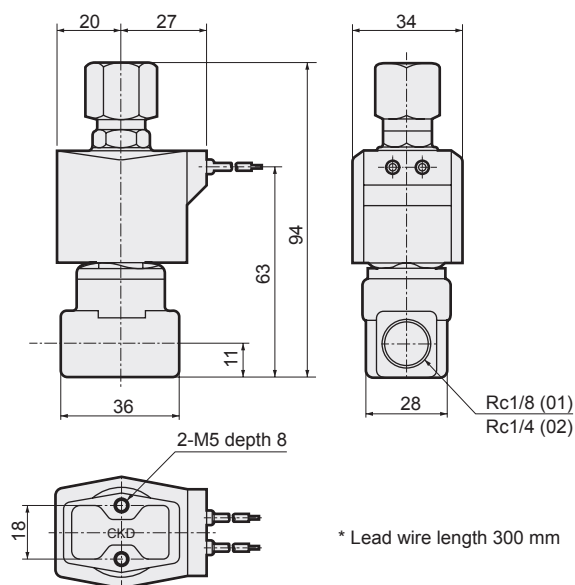
No.	Parts name	Material
1	Socket	C3604 (SUS303) Brass (stainless steel)
2	Coil	—
3	Core assembly	SUS405 equiv./316L/403*1 Stainless steel
4	Shading coil	Cu (Ag for stainless steel body) Copper (silver for stainless steel body)
5	Plunger	SUS405 equiv. Stainless steel
6	Sealant	NBR (FKM/EPDM/PTFE) NBR: nitrile rubber FKM: fluoro rubber EPDM: ethylene propylene rubber
7	O-ring	NBR (FKM/EPDM/PTFE) (AS568/019) PTFE: tetrafluoroethylene resin
8	Plunger spring	SUS304 Stainless steel
9	Body	C3771 (SUS303) Brass (stainless steel)

*1: When the body/sealant combination symbol is other than blank and H, the material is SUS405 or equivalent, 316L, 430.
*2: () shows options.

Dimensions: AG31 Series



● Grommet lead wire type
AG31-01/02-1 to 2



<Information> As the JIS symbol flow shows, pressure can be applied from any of the three piping ports. Generally, two orifices (TOP, BODY) have the same values and rated pressure. When not energized: COM → NO or NO → COM
When energized: COM → NC or NC → COM

Note 1: The dimensions are same for port sizes of G and NPT threads.

* Lead wire length 300 mm

Optional dimensions: AG31 Series

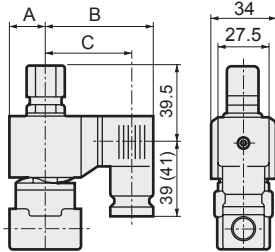


* Refer to the grommet lead wire type dimensions on the left page for common dimensions.

● DIN terminal box

AG31-01/02-1 to 2-*

2E
2G
2H



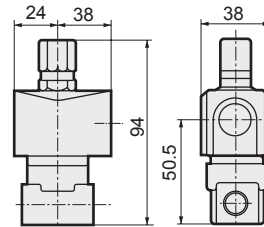
Dimensions shown in () are for G1/2.

Voltage	A	B	C
AC	20	62	50.5 (50)
DC	21	63.5	52 (51.5)

● Open frame type

AG31-01/02-1 to 2-*

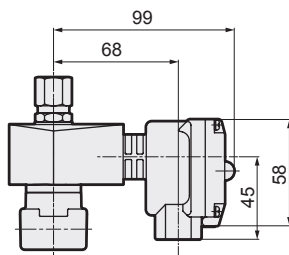
3A
4A
5A



● Open frame type + HP terminal box

AG31-01/02-1 to 2-*

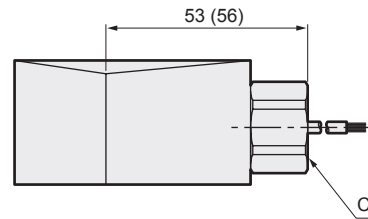
3 M / 4M
5 N / 4N
I
J



● Open frame type + conduit

AG31-01/02-1 to 2-*

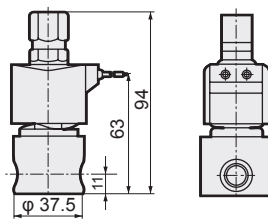
3A G
4A H
5A



Dimensions shown in () are for G1/2.

● Stainless steel body + grommet lead wire type

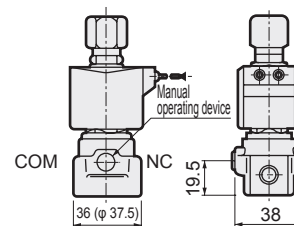
AG31-01/02-1 to 2-D/E/F/R/W/L/M/N



● Manual operating device (locking)

AG31-01/02-1 to 2-***A

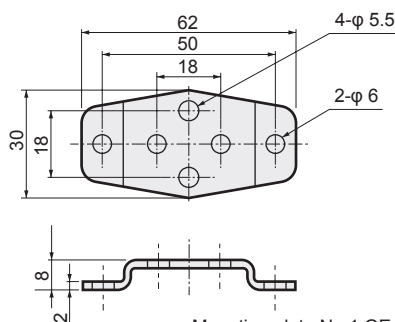
The figure shows brass body.



Dimensions shown in () are for stainless steel body.

● Mounting plate

AG31-01/02-1 to 2-***B



Mounting plate No.1 GE-100106

EXA

FWD

HNB/G

USB/G

FAB/G

FGB/G

FVB

FWB/G

FHB

FLB

AB

AG

AP/
AD

APK/
ADK

For
dry air

Explosion
proof

HVB/
HVL

S^ΔB/
NAB

LAD/
NAD

Related
components
for water

NP/NAP/
NVP

CHB/G

MXB/G

Others
Valve

Dust
collecting

CVE/
CVSE

CCH,
CPE/D

Medical
analysis

Gas
combustion

Automatic
watering

Custom order
product

Ending