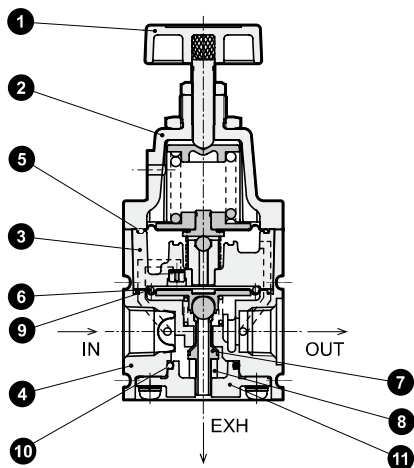
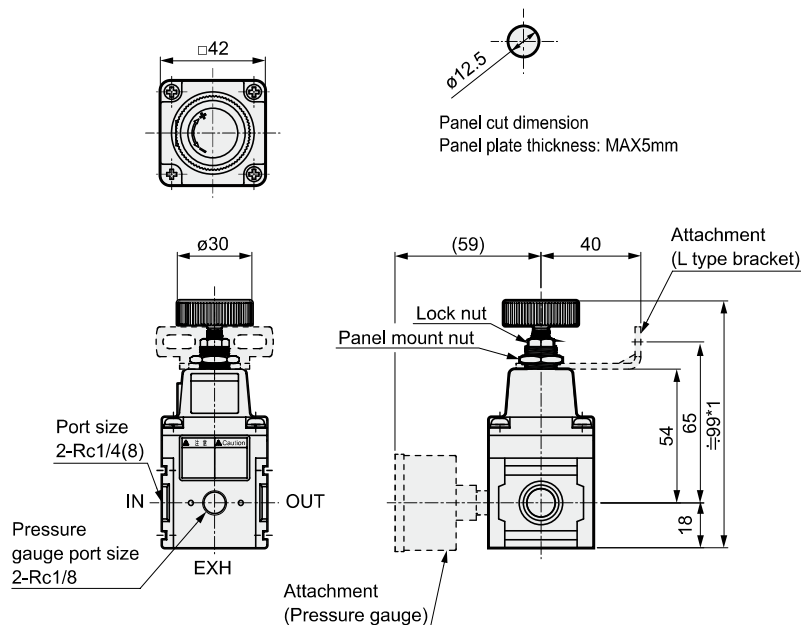


## Internal structure and parts list



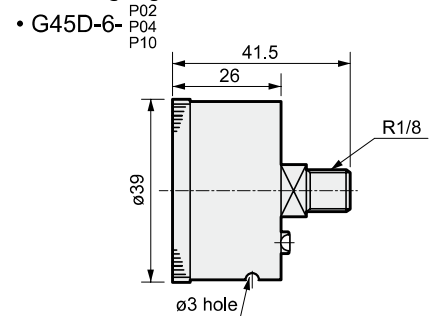
No.	Part name	Material
1	Pressure adjustment knob	Polyacetal resin, stainless steel
2	Cover	Aluminum alloy die-casting
3	Pilot body assembly	Aluminum alloy die-casting etc.
4	Body	Aluminum alloy die-casting
5	Pilot diaphragm assembly	Hydrogen nitrile rubber, zinc alloy die-casting
6	Main diaphragm assembly	Hydrogen nitrile rubber, zinc alloy die-casting
7	Valve	Hydrogen nitrile rubber, stainless steel
8	Bottom rubber	Silicone rubber
9	O ring	Nitrile rubber
10	O ring	Hydrogen nitrile rubber
11	Bottom plug	Polybutylene terephthalate

## Dimensions



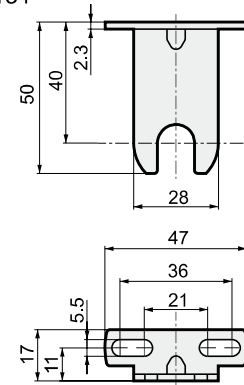
\*1: Dimension at setting pressure 0MPa  
\*2: Pressure gauge and bracket are optional.

### Pressure gauge



### L type bracket

• B131



## (Reference) Rough standard for operation speed of cylinder

Cylinder bore size (mm)	Recommended operation speed (mm/s)
ø40	500 or less
ø50	320 or less
ø63	200 or less
ø80	130 or less
ø100	80 or less

These values show rough standards for operation speed of cylinder. They are calculated from air supply and exhaust flow rate with the precision regulator attached directly to the cylinder and consumption flow rate necessary for PUSH-PULL of a cylinder. Use beyond the capability of precision regulator may lead to failure.