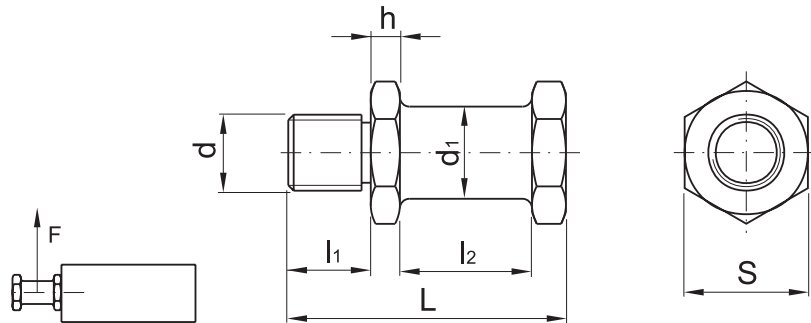


Czop transportowy VDI 3366

Lifting stud VDI 3366

CT



d	l ₁	l ₂	L	d ₁	h	S	F _{max} [kg]	NR KAT.
M16	22	16	50	16	6	27	320	CT-16
M20	25	20	60	20	7,5	32	500	CT-20
M24	32	25	78	25	10,5	36	1000	CT-24
M30	40	32	95	32	11,5	41	1500	CT-30
M36	50	40	118	40	14	50	2500	CT-36