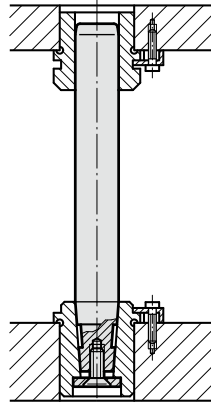


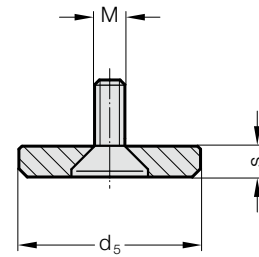
带沉头螺钉的固定片根据, DIN 9825/ISO 9182-4
带沉头螺钉的固定片, ~AFNOR



安装示例



2021.53.



材料:
固定片: 钢, 发黑处理
沉头螺栓 DIN 7991/ISO 10642

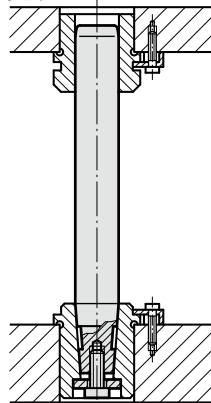
说明:
需要单独订购导向柱。锥形根据DIN 9825 / ISO 9182-4 的2021.50或者2021.58

2021.53. 带沉头螺钉的固定片根据, DIN 9825/ISO 9182-4

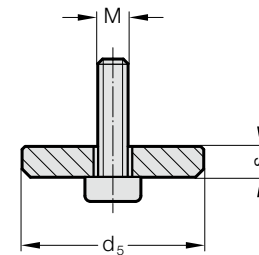
订购编号	公称通径	立柱 \varnothing	d_5	s	M
2021.53.020	20	19/20	22	3	M6
2021.53.025	25	24/25	25	3	M8
2021.53.032	32	30/32	32	3	M8
2021.53.040	40	38/40	40	5	M8
2021.53.050	50	48/50	50	5	M10
2021.53.063	63	60/63	63	6	M12



安装示例



202.53.



材料:
固定片: 钢, 发黑处理
圆柱头螺栓 DIN 6912

说明:
需要单独订购导向柱。锥形根据AFNOR 的2021.50或者2021.58

202.53. 带沉头螺钉的固定片, ~AFNOR

订购编号	立柱 \varnothing	d_5	s	M
202.53.016	16	18	3	M6
202.53.020	20	22	3	M6
202.53.025	25	25	4	M8
202.53.032	32	32	4	M8
202.53.040	40	40	4	M8
202.53.050	50	50	5	M10
202.53.063	63	63	6	M12