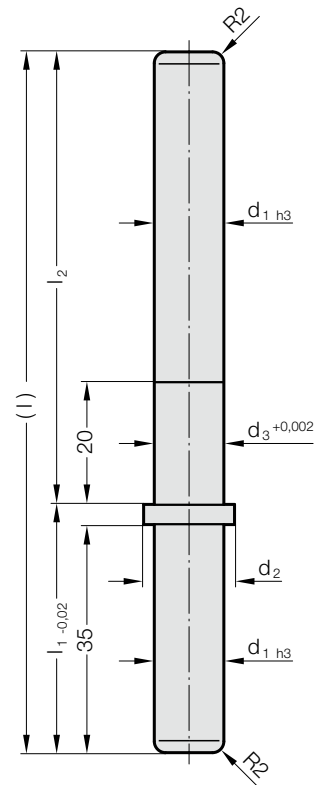


## GUIDE PILLAR WITH COLLAR



202.61.



### Description:

On small modular die sets the combination plastic ball cage 206.41./collared guide pillar 202.61. has indeed been successful for several years.

### Material:

Steel, surface hardened  
Surface hardness: 60 + 4 HRC, Hardness penetration 1 ± 0,2 mm

### Execution:

precision ground

### Note:

For use with ball cage 206.41. and guide bushes 2062.44.012. or 2061.44.015.

### 202.61. Guide pillar with collar

Order No	d <sub>1</sub>	d <sub>2</sub>	d <sub>3</sub>	l	l <sub>1</sub>	l <sub>2</sub>
202.61.012.041.074	12	15.9	12.02	115	41	74
202.61.015.044.080	15	23.5	15.02	124	44	80