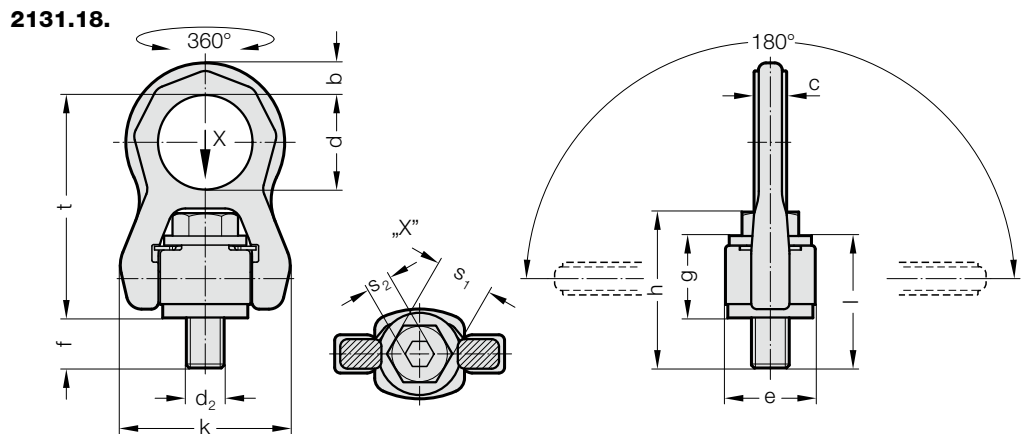


ACP-TURNADO



Description:

The ACP-Tornado can be rotated 360°, is adjustable in the direction of pull and can be swivelled 180°. The load bracket must be free to move and must not rest on any edges.

The spring mechanism ensures that the load bar aligns itself automatically in the direction of optimum force application.

Do not rotate under load.

Full load bearing capacity in any direction.

Can be loaded on all sides for four times the security (4:1).

Complete with a 100% crack-checked outer and inner hexagonal bolt for universal tool use.

Note:

Ensure even screw-in surface, threads must be screwed in completely.

2131.18. ACP-Tornado

Order No	b	c	d	e	f	g	h	k	l	d ₂	s ₁	s ₂	t	Tightening torque [Nm]
2131.18.008	11	10.5	38	30	12	28	45.3	58	40	8	13	5	83	30
2131.18.010	11	10.5	38	30	16	28	50.4	58	44	10	17	6	83	60
2131.18.012	11	10.5	38	30	19	28	54.5	58	47	12	19	8	83	80
2131.18.016	14	14	50	40	22	36	68	76	58	16	24	10	107	150
2131.18.020	17	17.25	50	45	26.5	43.5	82.5	89	70	20	30	12	118	300
2131.18.024	23	23	66	60	34	55	104	120.5	89	24	36	14	154	500
2131.18.030	29	27	75	75	41.5	68.5	128.7	148	110	30	46	17	183	800

Max. carried load "G" in tonnes for various types of attachment

Type of attachment/Arrangement of the suspension points	$F_{3\phi}$ G	$F_1(F_2)$ G	$F_1(F_2)$ G	$F_1(F_2)$ G	$F_1(F_2)$ G	$F_1(F_2)$ G	$F_1(F_2)$ G	$F_1(F_2)$ G	$F_1(F_2)$ G	$F_1(F_2)$ G
Number of lines	1	1	2	2	2 symmetrical	2	3 and 4 symmetrical	3 and 4 asymmetrical	3 and 4 asymmetrical	3 and 4 asymmetrical
Angle of inclination/load direction	0°-7°	90°	0°-7°	90°	0-45°	45-60°	asymmetrical	0-45°	45-60°	asymmetrical
Order No.	carried load in tonnes									
2131.18.008	0,7	0,7	1,4	1,4	0,98	0,7	0,7	1,47	1,05	0,7
2131.18.010	1	1	2	2	1,4	1	1	2,1	1,5	1
2131.18.012	1,35	1,35	2,7	2,7	1,9	1,35	1,35	2,84	2	1,35
2131.18.016	2,5	2,5	5	5	3,5	2,5	2,5	5,25	3,75	2,5
2131.18.020	4	4	8	8	5,6	4	4	8,4	6	4
2131.18.024	6,3	6,3	12,6	12,6	8,8	6,3	6,3	13,2	9,5	6,3
2131.18.030	8	8	16	16	11,2	8	8	17	11,8	8