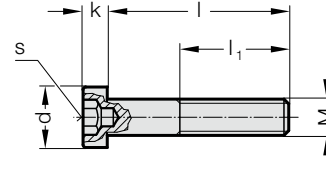


# HEXAGON SOCKET HEAD CAP SCREW, WITH LOW PROFILE HEAD AND KEY GUIDE, DIN 6912 - STRENGTH CLASS 8.8



2192.20.



## 2192.20. Hexagon socket head cap screw, with low profile head and key guide, DIN 6912 - Strength class 8.8

Order No	M	l	l <sub>1</sub>	d	k	s	Order No	M	l	l <sub>1</sub>	d	k	s
2192.20.04.008	M4	8	6	7	2.8	3	2192.20.06.035	M6	35	18	10	4	5
2192.20.04.010	M4	10	8	7	2.8	3	2192.20.06.040	M6	40	18	10	4	5
2192.20.04.012	M4	12	10	7	2.8	3	2192.20.06.045	M6	45	18	10	4	5
2192.20.04.016	M4	16	14	7	2.8	3	2192.20.06.050	M6	50	18	10	4	5
2192.20.04.020	M4	20	14	7	2.8	3	2192.20.08.010	M8	10	5.3	13	5	6
2192.20.04.025	M4	25	14	7	2.8	3	2192.20.08.012	M8	12	7.3	13	5	6
2192.20.04.030	M4	30	14	7	2.8	3	2192.20.08.016	M8	16	11.3	13	5	6
2192.20.04.035	M4	35	14	7	2.8	3	2192.20.08.018	M8	18	13.3	13	5	6
2192.20.04.040	M4	40	14	7	2.8	3	2192.20.08.020	M8	20	15.3	13	5	6
2192.20.05.008	M5	8	5.4	8.5	3.5	4	2192.20.08.025	M8	25	20.3	13	5	6
2192.20.05.010	M5	10	7.4	8.5	3.5	4	2192.20.08.030	M8	30	22	13	5	6
2192.20.05.012	M5	12	9.4	8.5	3.5	4	2192.20.08.035	M8	35	22	13	5	6
2192.20.05.016	M5	16	13.4	8.5	3.5	4	2192.20.08.040	M8	40	22	13	5	6
2192.20.05.020	M5	20	16	8.5	3.5	4	2192.20.08.045	M8	45	22	13	5	6
2192.20.05.025	M5	25	16	8.5	3.5	4	2192.20.08.050	M8	50	22	13	5	6
2192.20.05.030	M5	30	16	8.5	3.5	4	2192.20.08.060	M8	60	22	13	5	6
2192.20.05.035	M5	35	16	8.5	3.5	4	2192.20.10.020	M10	20	14.5	16	6.5	8
2192.20.05.040	M5	40	16	8.5	3.5	4	2192.20.10.025	M10	25	19.5	16	6.5	8
2192.20.06.008	M6	8	4.3	10	4	5	2192.20.10.030	M10	30	25.5	16	6.5	8
2192.20.06.010	M6	10	6.3	10	4	5	2192.20.10.060	M10	60	26	16	6.5	8
2192.20.06.012	M6	12	8.3	10	4	5	2192.20.10.080	M10	80	26	16	6.5	8
2192.20.06.016	M6	16	12.3	10	4	5	2192.20.10.090	M10	90	26	16	6.5	8
2192.20.06.018	M6	18	14.3	10	4	5	2192.20.12.030	M12	30	20	18	7.5	10
2192.20.06.020	M6	20	16.3	10	4	5	2192.20.12.035	M12	35	25	18	7.5	10
2192.20.06.025	M6	25	21.3	10	4	5	2192.20.16.040	M16	40	34	24	8	14
2192.20.06.030	M6	30	18	10	4	5							