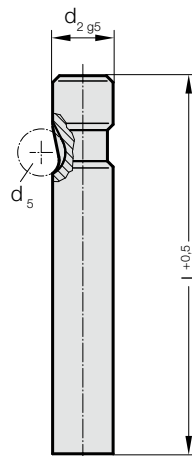


SCHNELLWECHSEL-SCHNEIDSTEMPEL, ROHLING, LEICHT BELASTBAR

2202.

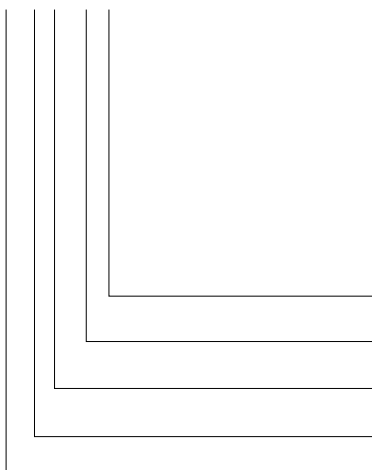


2202. Schnellwechsel-Schneidstempel, Rohling, leicht belastbar

d ₂ / Bestellziffer	d ₅	l / Bestellbuchstabe	63 (C)	71 (D)	80 (E)	90 (F)	100 (G)	110 (H)	125 (J)	140 (K)	150 (L)	175 (M)	200 (N)
6 / (1)	6		●	●	●	●	●						
10 / (2)	8		●	●	●	●	●	●	●				
13 / (3)	8		●	●	●	●	●	●	●	●	●	●	
16 / (4)	8		●	●	●	●	●	●	●	●	●	●	●
20 / (5)	8		●	●	●	●	●	●	●	●	●	●	●
25 / (6)	8		●	●	●	●	●	●	●	●	●	●	●
32 / (7)	8			●	●	●	●	●	●	●	●	●	●
38 / (8)	8				●	●	●	●	●	●	●	●	●

Bestell-Beispiel:

2202.7G



Länge: l
100 mm
Durchmesser: d₂
32 mm
Typ:
leicht
Ausführung:
Rohling
Schneidstempel:
ohne Abdrückstift

Bestellbuchstabe
= (G)
Bestellziffer
= (7)
Bestellziffer
= (2)
Bestellziffer
= (0)
Bestellziffer
= 22

Werkstoff:

HSS
Härte 62 ± 2 HRC

Ausführung:

Schaft feinstgeschliffen.
Sonderanfertigung auf Anfrage.