

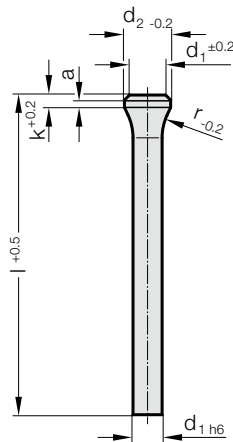
# 带喇叭颈的冲头, DIN 5118 A 型



2284.3. 带喇叭颈的冲头, DIN 5118 A 型

d <sub>1</sub>	d <sub>2</sub>	a	k	r	l	71	80	100	110
2	3	1	3	3.5		●	●	●	
2.1	3.2	1	3	5		●	●	●	
2.2	3.2	1	3	5		●	●	●	
2.3	3.5	1	3	5		●	●	●	
2.4	3.5	1	3	5		●	●	●	
2.5	3.5	1	3	5		●	●	●	
2.6	4	1	3	6.5		●	●	●	
2.7	4	1	3	6.5		●	●	●	
2.8	4	1	3	6.5		●	●	●	
2.9	4	1	3	6.5		●	●	●	
3.1	4.5	1	3	6.5		●	●	●	
3.2	4.5	1	3	6.5		●	●	●	
3.3	4.5	1	3	6.5		●	●	●	
3.4	4.5	1	3	6.5		●	●	●	
3.5	5	1	3	8		●	●	●	
3.6	5	1	3	8		●	●	●	
3.7	5	1	3	8		●	●	●	
3.8	5	1	3	8		●	●	●	
4.1	5.5	1.5	4	8		●	●	●	
4.2	5.5	1.5	4	8		●	●	●	
4.3	5.5	1.5	4	8		●	●	●	
4.4	5.5	1.5	4	8		●	●	●	
4.5	6	1.5	4	8		●	●	●	
4.6	6	1.5	4	8		●	●	●	
4.7	6	1.5	4	8		●	●	●	
4.8	6	1.5	4	8		●	●	●	
4.9	6	1.5	4	8		●	●	●	
5.1	7	1.5	4	10		●	●	●	
5.2	7	1.5	4	10		●	●	●	
5.5	8	1.5	4	10		●	●	●	
5.6	8	1.5	4	10		●	●	●	
6.1	9	1.5	4	10		●	●	●	
6.2	9	1.5	4	10		●	●	●	
6.3	9	1.5	4	10		●	●	●	
6.4	9	1.5	4	10		●	●	●	
6.5	10	1.5	4	12		●	●	●	●
7	10	1.5	4	12		●	●	●	●
7.5	11	1.5	4	12		●	●	●	●
7.7	11	1.5	4	12		●	●	●	●
8.1	11	1.5	4	12		●	●	●	●
8.5	13	1.5	4	15		●	●	●	●
9	13	1.5	4	15		●	●	●	●
9.5	14	1.5	4	15		●	●	●	●
10.5	15	1.5	4	15		●	●	●	●
11	15	1.5	4	15		●	●	●	●
11.5	16	1.5	4	15		●	●	●	●
12	16	1.5	4	15		●	●	●	●
12.5	17	1.5	4	15		●	●	●	●
13.5	18	1.5	4	15		●	●	●	●
14	18	1.5	4	15		●	●	●	●
14.5	19	1.5	4	15		●	●	●	●
15	19	1.5	4	15		●	●	●	●
15.5	20	1.5	4	15		●	●	●	●
17	21	1.5	4	15		●	●	●	●
18	22	1.5	4	15		●	●	●	●
19	23	1.5	4	15		●	●	●	●
19.5	25	1.5	4	15		●	●	●	●

2284.3.



**材料:**

HSS  
 订购编号 2284.3.  
 硬度:  
 杆部 62-66 HRC  
 头部 45-55 HRC

☞ 材料说明和其他材料见E章开头。

**结构:**

凸模杆部已精磨。凸模头部已热锻并退火。

**说明:**

匹配的先导式铤钻 2284.00.

**订购示例:**

带喇叭颈的冲头, DIN 5118 A 型	=	2284.3.
轴径 d <sub>1</sub>	5.2 mm =	0520.
长度 l	80 mm =	080
订购编号	=	2284.3. 0520. 080