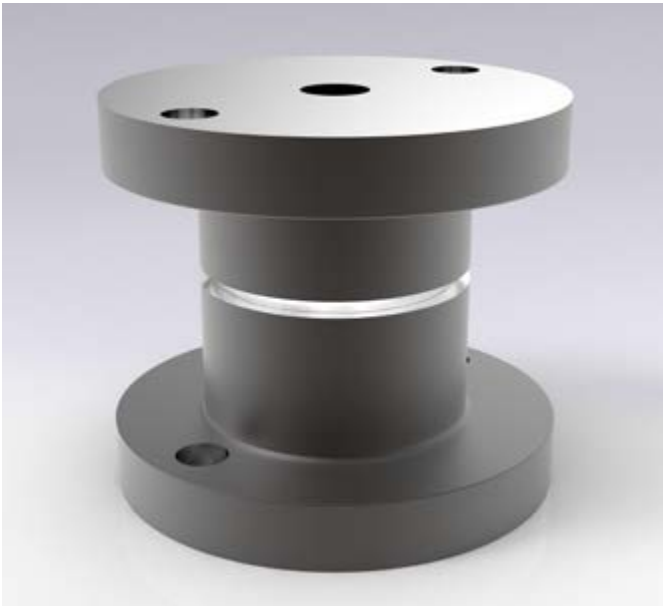
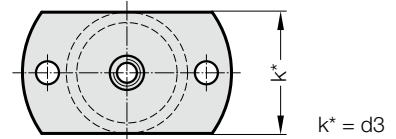
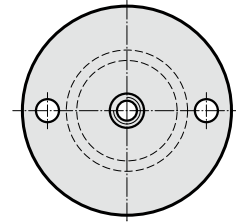
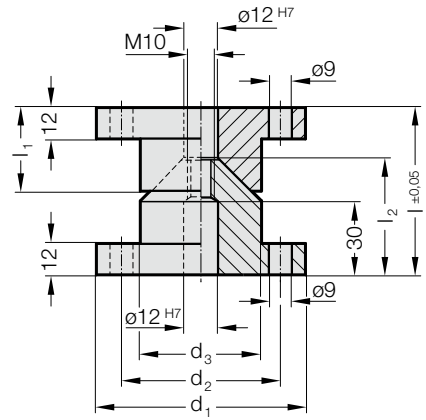


定心夹紧装置, BMW



2441.11.15.



材料:

16MnCr5, 热处理

圆锥面 感应淬火

表面硬度: 60 + 4 HRC, 淬火深度 1,0 + 0,5 mm

说明:

单独订购调整盘 - BMW 2441.11.15.3.。

供货不含螺栓

2441.11.15.□□□

对中单元 BMW

2441.11.15.□□□.2

对中单元, 两面展平的 BMW

2441.11.15. 定心夹紧装置, BMW

订购编号	d ₁	d ₂	d ₃	l	l ₁	l ₂
2441.11.15.080	80	63	48	70	37	47
2441.11.15.080.2	80	63	48	70	37	47