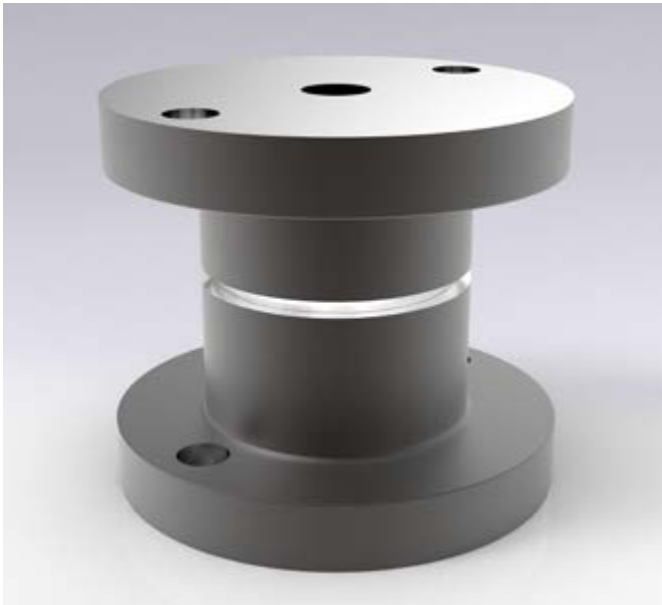
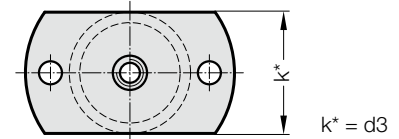
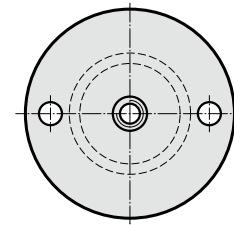
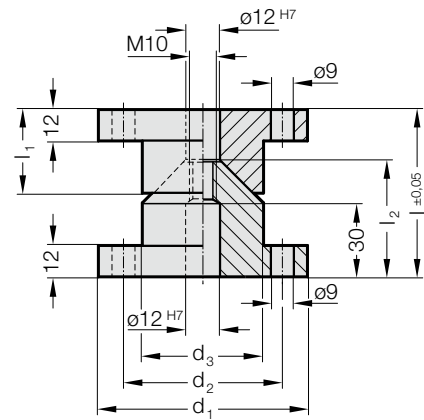


CENTERING UNIT, BMW



2441.11.15.



Material:

16MnCr5, heat treated

Conical surfaces induction hardened

Surface hardness: 60 + 4 HRC, Hardness penetration 1,0 + 0,5 mm

Note:

Spacer, BMW 2441.11.15.3. order separately.

Delivery without screws

2441.11.15..□□□

Centring unit BMW

2441.11.15.□□□.2

Centring unit, BMW with bevel on both sides

2441.11.15. Centring unit, BMW

Order No	d_1	d_2	d_3	l	l_1	l_2
2441.11.15.080	80	63	48	70	37	47
2441.11.15.080.2	80	63	48	70	37	47