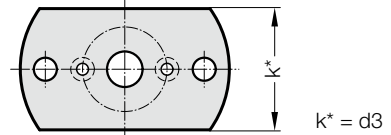
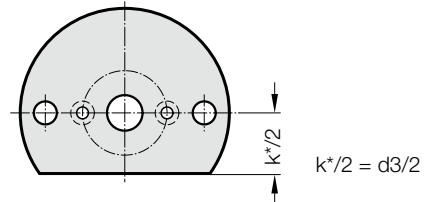
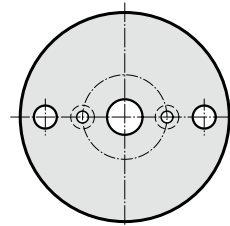
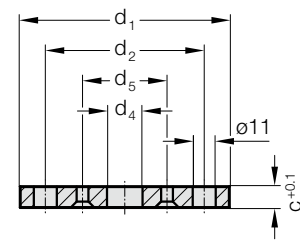


# 调整垫片



2441.11.3.



**材料:**

C 45 或类似产品

**说明:**

2441.11.3.□□□

调整垫片

2441.11.3.□□□.1

调整垫片具有单侧切螺纹头

2441.11.3.□□□.2

调整垫片具有双侧切螺纹头

2441.11.3. 调整垫片

订购编号	d <sub>1</sub>	d <sub>2</sub>	d <sub>4</sub>	d <sub>5</sub>	c	k
2441.11.3.100	100	76	17	40.5	9.8	-
2441.11.3.100.1	100	76	17	40.5	9.8	58
2441.11.3.100.2	100	76	17	40.5	9.8	58
2441.11.3.105	105	76	18	40.5	5.5	-
2441.11.3.120	120	96	17	50.5	9.8	-
2441.11.3.120.1	120	96	17	50.5	9.8	78
2441.11.3.120.2	120	96	17	50.5	9.8	78
2441.11.3.125	125	96	18	50.5	5.5	-