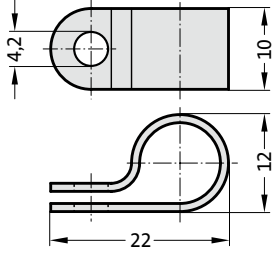


# GAS SPRING ACCESSORIES

## COMPRESSION FITTING – COMPOUND THREADED JOINTS

**2480.00.10.20.12.01**

Hose clamp  
for gauging hose DN4 (Ø 9 mm)



**Material:**

Polyamide

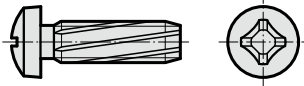
**Note:**

Supplied without screws



**2192.50.04.012**

Self-tapping screw DIN 7516  
M4x12



**Note:**

self-tapping

Diameter of hole for self-tapping  
screw = 3.6 mm



**2480.00.23.13.**

Anti-scuff spiral  
for subsequent installation over hoses and tubing



Order No. l [m]

2480.00.23.13.0001	1
2480.00.23.13.0002	2
2480.00.23.13.0005	5
2480.00.23.13.0010	10

**Description:**

The anti-scuff spiral is used to protect against abrasion, is resistant to air, water, oil, hydraulic fluids petrol and other liquids.

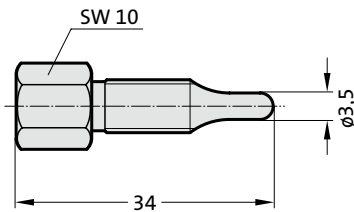
**Material:**

Polyamide

Inner ø 7 mm  
For hose external ø max. 5-11 mm  
-30°C up to  
Temperature range +100°C

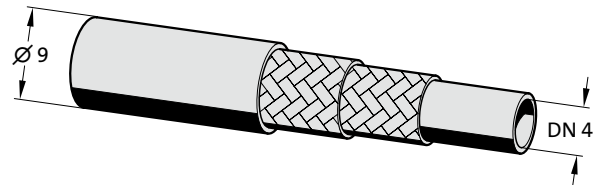
**2480.00.54.01**

Expansion punch for hosing



**2480.00.10.20.**

High-pressure hose

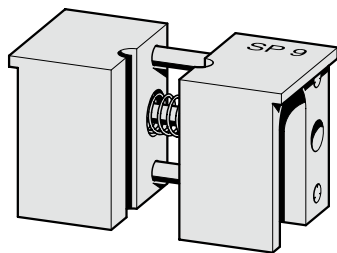


**Ordering Code (example):**

High-pressure hose	=	2480.00.10.20.
Length 10 m	=	0010
Order No.	=	2480.00.10.20.0010

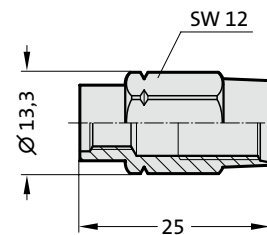
**2480.00.54.02**

Vice jaws  
for holding high-pressure hose



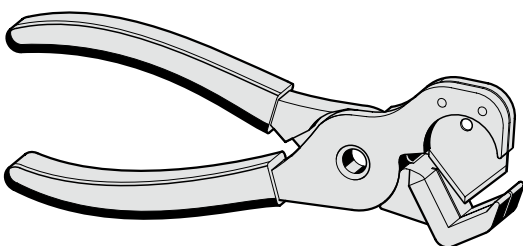
**2480.00.10.21**

Hose screw fitting (female)



**2480.00.54.03**

Hose shears



**2480.00.10.22**

Hose screw fitting (male)

