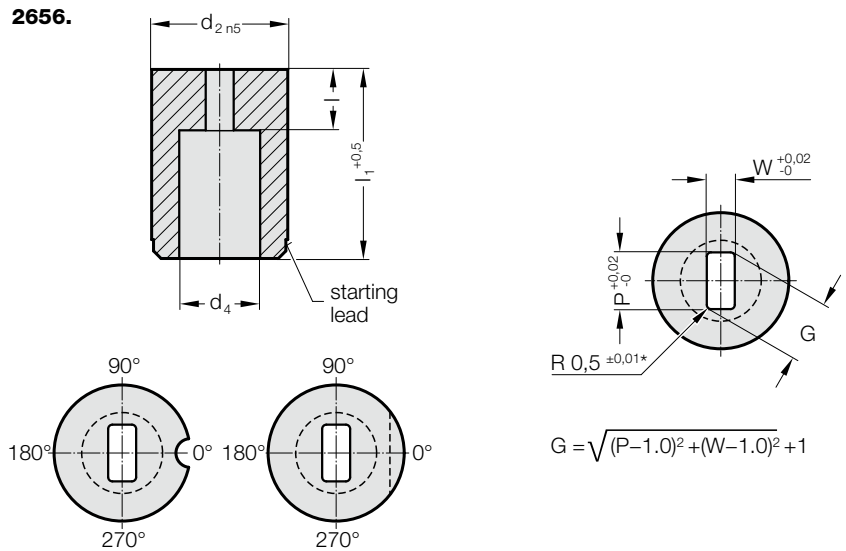


# MATRIX WITHOUT SHOULDER, RECTANGLE WITH RADIUSSED CORNERS, ISO 8977



## 2656. Matrix without shoulder, rectangle with radiused corners, ISO 8977

$d_2$ / Order No	$d_4$	$W_{min}$	$G_{max}$	$l_1$ / Order No	$l_1$ / (Order Code character)	16 (B)	20 (C)	22 (D)	25 (E)	28 (F)	30 (G)	32 (H)	35 (J)	40 (K)
10 / (4)	5.8	1.2	5	4 (3) 8 (6)		●	●	●	●	●	●	●	●	●
13 / (5)	8	2	7	5 (4) 8 (6)			●	●	●	●	●	●	●	●
16 / (6)	9.5	2.4	9	5 (4) 8 (6)			●	●	●	●	●	●	●	●
20 / (7)	12	3.2	11	8 (6) 12 (8)			●	●	●	●	●	●	●	●
22 / (8)	15	4	14	8 (6) 12 (8)			●	●	●	●	●	●	●	●
25 / (9)	17.3	4.8	16	8 (6) 12 (8)			●	●	●	●	●	●	●	●
32 / (10)	20.7	5.5	20	8 (6) 12 (8)			●	●	●	●	●	●	●	●
38 / (11)	27.7	6.4	27	8 (6) 12 (8)					●	●	●	●	●	●
40 / (12)	27.7	6.4	27	8 (6) 12 (8)					●	●	●	●	●	●
50 / (14)	37	9	36	8 (6) 12 (8)					●	●	●	●	●	●

### Material:

HSS

Hardness  $62 \pm 2$  HRC

### Execution:

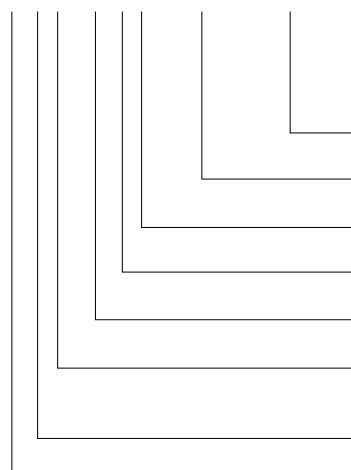
Diameter  $d_2$ , starting lead and face surfaces ground.

Special dimensions on request.

\* For other radius options, see standardised special shapes.

### Ordering Code (example): with anti-rotation element

**2656.10F8.1350.0650.A1**



#### Anti-rotation element:

Pin  $\varnothing 3$  mm

#### Angle:

$0^\circ$

#### Shape: rectangle with radiused corners, Width W

$W = 6,5$  mm

#### Shape: rectangle with radiused corners, Length P

$P = 13,5$  mm

#### Shape cutting length: l

12 mm

#### Length: $l_1$

28 mm

#### Diameter: $d_2$

32 mm

#### Type:

without shoulder

ISO 8977

#### Execution:

rectangle with radiused corners

#### Matrix

#### Order No

= (1)

#### Order Code character

= (A)

#### Order Code character

= (0650)

#### Order Code character

= (1350)

#### Order No

= (8)

#### Order Code character

= (F)

#### Order No

= (10)

#### Order No

= (6)

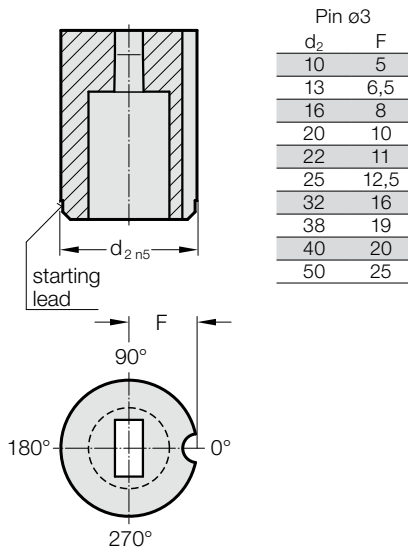
#### Order No

= (5)

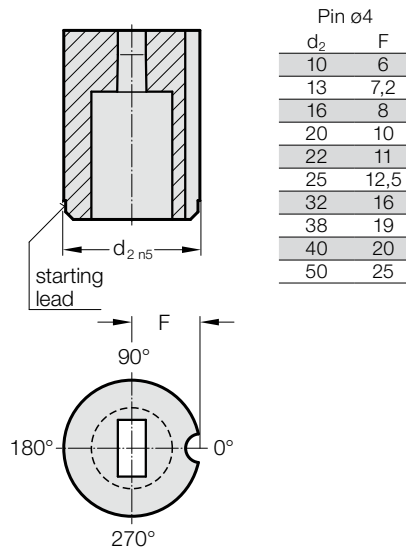
= (26)

# MATRIXES WITHOUT SHOULDER, CYLINDRICAL, ISO 8977, ANTI-ROTATION ELEMENTS

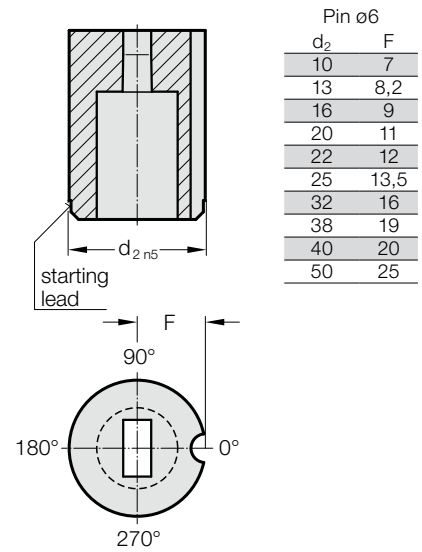
Anti-rotation element 1 (1)



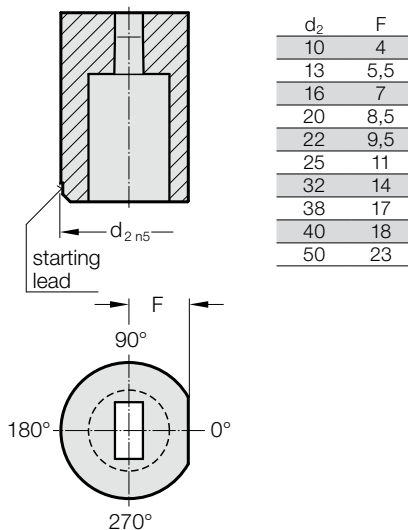
Anti-rotation element 2 (2)



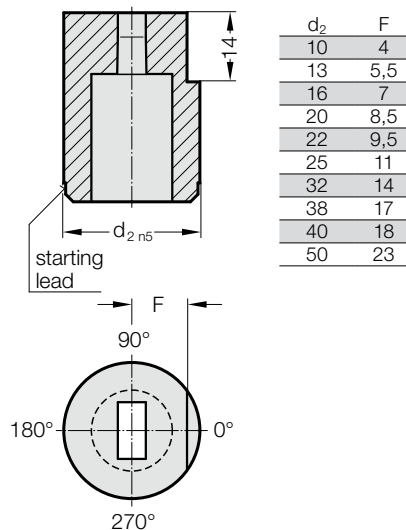
Anti-rotation element 3 (3)



Anti-rotation element 4 (4)



Anti-rotation element 5 (5)



Anti-rotation element 6 (6)

