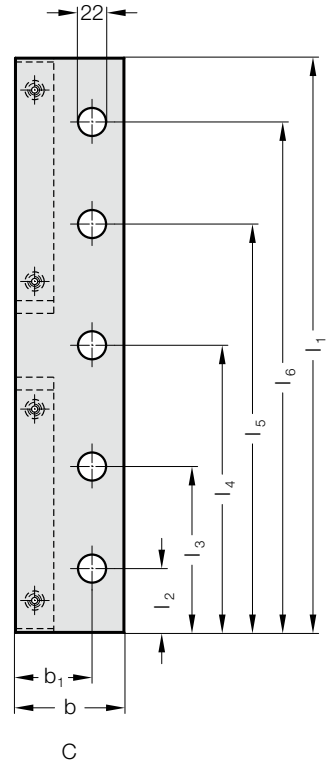
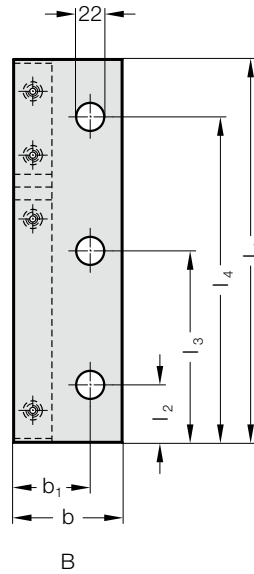
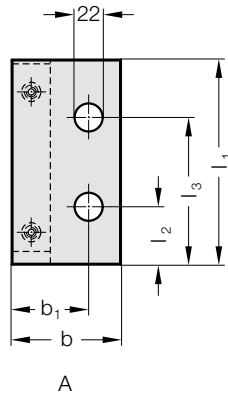
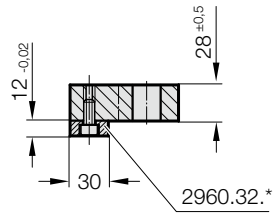


带滑动板的盖板条、钢/带固态润滑剂的青铜, 符合 VW 要求



2961.30.55.



材料:

盖板条: 钢

滑动板: 带烧结层的钢

结构:

带滑动板的盖板条包括:

- 盖板条
- \*滑动板 2960.32.
- 圆柱头螺栓, 符合 DIN EN SO 4762 M8x16 (2x, 4x)

说明:

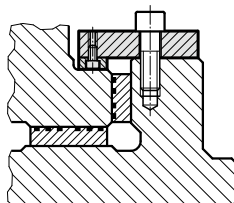
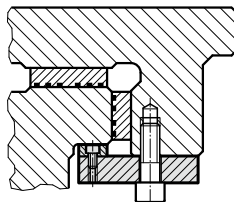
供货时不提供螺栓。

盖板条无法单独订购。

\* 滑动板 2960.32. 如果磨损, 可单独订购。

固定件:

使用符合 DIN EN ISO 4762 M20 标准的圆柱头螺栓。



## 带滑动板的盖板条、钢/带固态润滑剂的青铜, 符合 VW 要求

### 2961.30.55. 带滑动板的盖板条、钢/带固态润滑剂的青铜, 符合 VW 要求

订购编号	形状	b	b <sub>1</sub>	l <sub>1</sub>	l <sub>2</sub>	l <sub>3</sub>	l <sub>4</sub>	l <sub>5</sub>	l <sub>6</sub>	螺栓孔数量
2961.30.55.085.28.160	A	85	60	160	45	115	-	-	-	2
2961.30.55.085.28.200	A	85	60	200	45	155	-	-	-	2
2961.30.55.085.28.250	B	85	60	250	45	125	225	-	-	3
2961.30.55.085.28.300	B	85	60	300	45	150	255	-	-	3
2961.30.55.085.28.350	B	85	60	350	45	175	305	-	-	3
2961.30.55.085.28.400	C	85	60	400	45	125	200	275	355	5
2961.30.55.085.28.450	C	85	60	450	50	130	225	320	400	5
2961.30.55.085.28.500	C	85	60	500	50	130	250	370	450	5
2961.30.55.125.28.160	A	125	75	160	45	115	-	-	-	2
2961.30.55.125.28.200	A	125	75	200	45	155	-	-	-	2
2961.30.55.125.28.250	B	125	75	250	45	125	225	-	-	3
2961.30.55.125.28.300	B	125	75	300	45	150	255	-	-	3
2961.30.55.125.28.350	B	125	75	350	45	175	305	-	-	3
2961.30.55.125.28.400	C	125	75	400	45	125	200	275	355	5
2961.30.55.125.28.450	C	125	75	450	50	130	225	320	400	5
2961.30.55.125.28.500	C	125	75	500	50	130	250	350	450	5