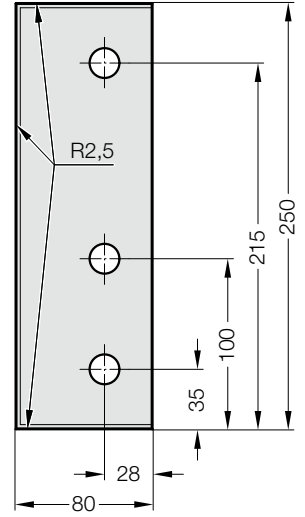
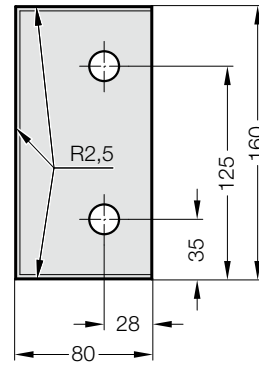
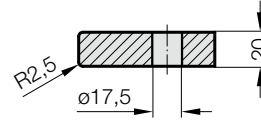
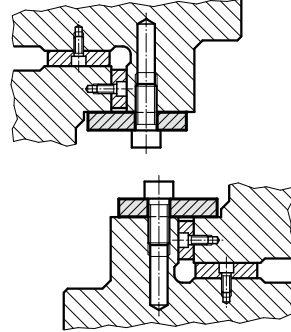


SÜRTÜNME PLAKASI, ÇELİK, CNOMO



Montaj Örneği

2961.79.45.



Malzeme:

Çelik, yüzeysel sertleştirilmiş

Not:

Civatalar dahil değildir.

Sabitleme:

Soket başlı vida kullanınız DIN EN ISO 4762 M16.

2961.79.45. Sürtünme Plakası, Çelik, CNOMO

Sipariş No.

2961.79.45.080.20.160

2961.79.45.080.20.250

Vida Delği adedi

2

3