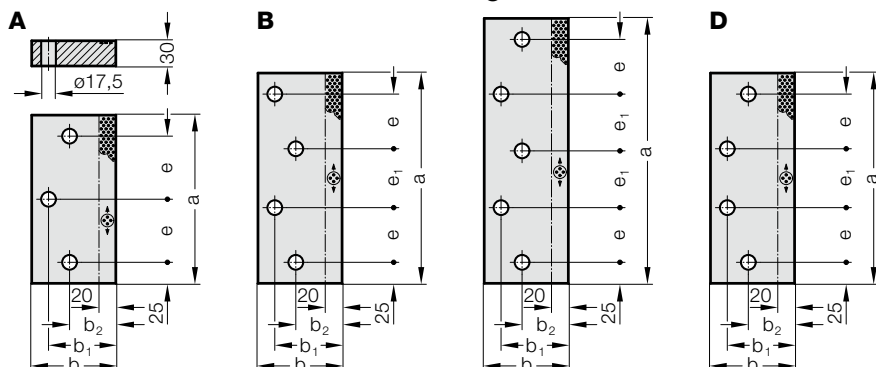
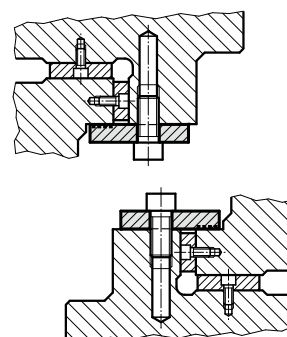


LISTWA ŚLIZGOWA, STAL Z WKŁADKAMI GRAFITOWYMI, NAAMS

2961.82.



Przykład zabudowy



2961.82. Listwa ślizgowa, Stal z wkładkami grafitowymi, NAAMS

| Nr katalogowy | Typ | b | a | b ₁ | b ₂ | e | e ₁ | Liczba śruby |
|-------------------|-----|-----|-----|----------------|----------------|-----|----------------|--------------|
| 2961.82.075.200 | A | 75 | 200 | 55 | 40 | 75 | | 3 |
| 2961.82.075.250 | B | 75 | 250 | 55 | 40 | 65 | 70 | 4 |
| 2961.82.075.250.1 | D | 75 | 250 | 55 | 40 | 65 | 70 | 4 |
| 2961.82.075.250.2 | A | 75 | 250 | 55 | 40 | 100 | | 3 |
| 2961.82.075.315 | C | 75 | 315 | 55 | 40 | 65 | 67,5 | 5 |
| 2961.82.075.350 | C | 75 | 350 | 55 | 40 | 75 | 75 | 5 |
| 2961.82.075.400 | C | 75 | 400 | 55 | 40 | 90 | 85 | 5 |
| 2961.82.075.450 | C | 75 | 450 | 55 | 40 | 100 | 100 | 5 |
| 2961.82.100.200 | A | 100 | 200 | 80 | 55 | 75 | | 3 |
| 2961.82.100.250 | B | 100 | 250 | 80 | 55 | 65 | 70 | 4 |
| 2961.82.100.250.1 | D | 100 | 250 | 80 | 55 | 65 | 70 | 4 |
| 2961.82.100.250.2 | A | 100 | 250 | 80 | 55 | 100 | | 3 |
| 2961.82.100.315 | C | 100 | 315 | 80 | 55 | 65 | 67,5 | 5 |
| 2961.82.100.350 | C | 100 | 350 | 80 | 55 | 75 | 75 | 5 |
| 2961.82.100.400 | C | 100 | 400 | 80 | 55 | 90 | 85 | 5 |
| 2961.82.100.450 | C | 100 | 450 | 80 | 55 | 100 | 100 | 5 |
| 2961.82.125.200 | A | 125 | 200 | 105 | 65 | 75 | | 3 |
| 2961.82.125.250 | B | 125 | 250 | 105 | 65 | 65 | 70 | 4 |
| 2961.82.125.250.1 | D | 125 | 250 | 105 | 65 | 65 | 70 | 4 |
| 2961.82.125.250.2 | A | 125 | 250 | 105 | 65 | 100 | | 3 |
| 2961.82.125.315 | C | 125 | 315 | 105 | 65 | 65 | 67,5 | 5 |
| 2961.82.125.350 | C | 125 | 350 | 105 | 65 | 75 | 75 | 5 |
| 2961.82.125.400 | C | 125 | 400 | 105 | 65 | 90 | 85 | 5 |
| 2961.82.125.450 | C | 125 | 450 | 105 | 65 | 100 | 100 | 5 |
| 2961.82.150.200 | A | 150 | 200 | 130 | 65 | 75 | | 3 |
| 2961.82.150.250 | B | 150 | 250 | 130 | 65 | 65 | 70 | 4 |
| 2961.82.150.250.1 | D | 150 | 250 | 130 | 65 | 65 | 70 | 4 |
| 2961.82.150.250.2 | A | 150 | 250 | 130 | 65 | 100 | | 3 |
| 2961.82.150.315 | C | 150 | 315 | 130 | 65 | 65 | 67,5 | 5 |
| 2961.82.150.350 | C | 150 | 350 | 130 | 65 | 75 | 75 | 5 |
| 2961.82.150.400 | C | 150 | 400 | 130 | 65 | 90 | 85 | 5 |
| 2961.82.150.450 | C | 150 | 450 | 130 | 65 | 100 | 100 | 5 |

Material:

Stal, hartowana powierzchniowo. Powierzchnie ślizgowe ze zmagazynowanym smarem stałym (wkładki grafitowe).

Uwaga:

Śruby nie wchodzą w zakres dostawy.

Mocowanie:

Stosować śruby z łbem walcowym DIN EN ISO 4762 M16.