

GAS SPRING MOULD LINE

Note:

Initial spring force at 150 bar/20°C is 300 daN

Order No. for spare parts kit: 3487.12.00300

Pressure medium: Nitrogen - N₂

Max. filling pressure depends on working temperature:

150 bar (20°C) at 0°C-80°C

125 bar (20°C) at 80°C-100°C

115 bar (20°C) at 100°C-120°C

Min. filling pressure: 25 bar (20°C)

Working temperature: 0°C to +120°C

Temperature related force increase: ± 0.3%/°C

Max. recommended extensions per minute:

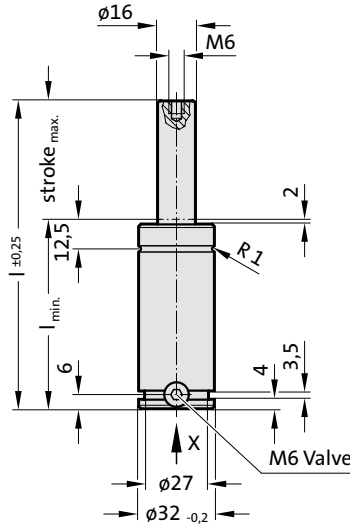
20 (at 0°C-80°C)

15 (at 80°C-100°C)

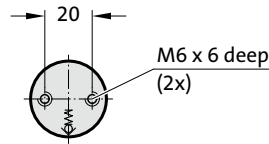
10 (at 100°C-120°C)

Max. piston speed: 1.0 m/s

3487.12.00300.



„X”

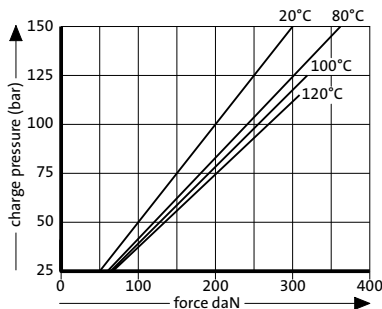


3487.12.00300.

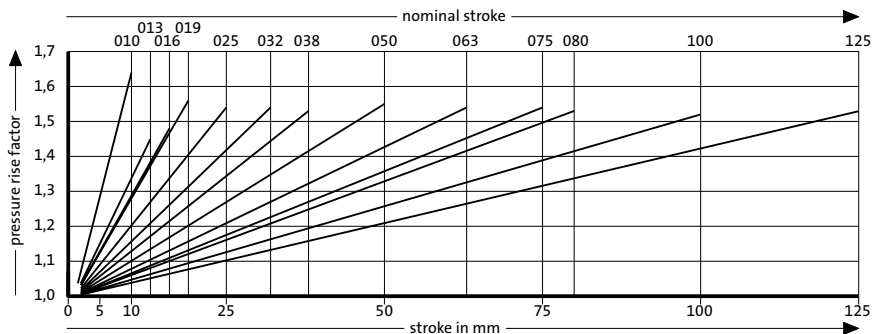
Gas spring MOULD LINE

Order No	Stroke _{max.} (s)	l _{min.}	l
3487.12.00300.010	10	40	50
3487.12.00300.013	13	43	56
3487.12.00300.016	16	46	62
3487.12.00300.019	19	49	68
3487.12.00300.025	25	55	80
3487.12.00300.032	32	62	94
3487.12.00300.038	38	68	106
3487.12.00300.050	50	80	130
3487.12.00300.063	63	93	156
3487.12.00300.075	75	105	180
3487.12.00300.080	80	110	190
3487.12.00300.100	100	130	230
3487.12.00300.125	125	155	280

Initial spring force versus charge pressure



Spring force Diagram displacement versus stroke rise



Pressure rise factor accounts for displacement but not external influences!