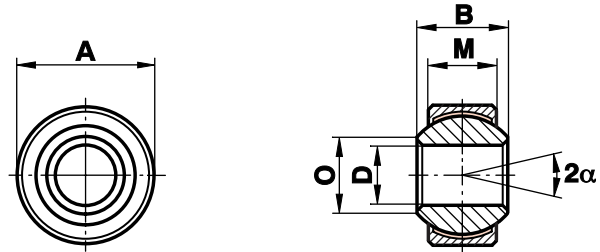


Spherical Plain Bearings Motor Sport Maintenance Free

Series GXSW..MS

Spherical Plain Bearings
with smaller outside $\bar{}$,
maintenance free.
Preloaded Bearing

For use at highest
dynamic pressure and
tension loads in corrosive
environments



Description	DH7	B	M	A h6	O	static radial load C ₀ kN	dynamic radial load C ₀ kN		weight gr
GXSW 8.19 MS	8	12	9,00	19	10,4	27,8	20,8	14 _i	17
GXSW 10.22 MS	10	14	10,50	22	12,9	39,0	28,1	13 _i	26
GXSW 12.26 MS	12	16	12,00	26	15,4	53,5	38,4	13 _i	41
GXSW 14.29 MS	14	19	13,50	29	16,8	70,0	50,5	16 _i	56
GXSW 16.32 MS	16	21	15,00	32	19,3	88,0	63,0	15 _i	75
GXSW 18.35 MS	18	23	16,50	35	21,8	106,5	76,5	15 _i	97
GXSW 20.40 MS	20	25	18,00	40	24,3	130,0	93,5	14 _i	142

Materials:

Insert: Stainless steel to 1.4571, Aisi 316Ti with PTFE liner bonded to the inner surface

Ball: Bearing steel to 100Cr6, Aisi 52100 hardened, ground, polished, hard chrome plated

Clearance: preloaded, zero tolerance

Onrequest: - Ball made from stainless steel to 1.4034 Aisi 420 hardened, ground, polished
- with V-Groove on both sides
- with threaded bolt