



## Resistance thermometer Angled sensor with compression fitting Series GF-7126

### PRODUCT FEATURES

- ✓ Resistance thermometer acc. to DIN EN 60751
- ✓ High precision platinum sensor
- ✓ High precision measuring system
- ✓ Single / double measuring system
- ✓ Vibration resistant design
- ✓ High temperature resistance
- ✓ Durable
- ✓ Process and fail safe
- ✓ Temperature and long-term stable
- ✓ ATEX version
- ✓ FDA / CE compliant version

### TECHNICAL DETAILS

#### Core values

PT50/PT100/PT500/PT1000  
KTY/NTC/PTC

#### Diameter

3,0 mm – 8,00 mm in standard

#### Form of the measuring tip

118° angled, plan, convex

#### Installation length

Min. 10mm up to max. 2000mm

#### Material

Sensor completely made of stainless steel

#### Process temp. at the measuring tip

Up to +600°C depending on version

#### Process connection

Using a suitable compression fitting

#### High – quality cable types

Connection cables  
All available versions

#### Connectivity

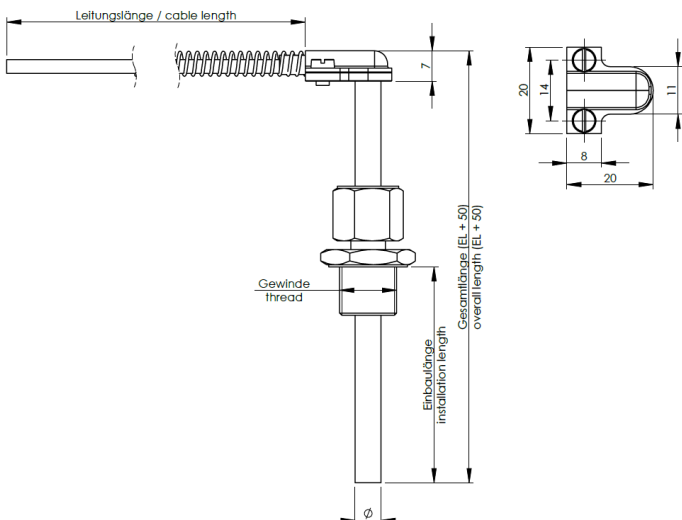
Free ends, plug, special

#### Special version

Customized, on request

<b>Standard version</b>												
	GF-7126											
<b>Number of measuring systems</b>												
1x		1										
2x		2										
<b>Core values measuring system</b>												
PT100 Class B			o.a.									
PT100 Class A			K1.A									
PT100 Class AA			K1.AA									
PT50/PT500/KTY/NTC/PTC + Type			KTY									
Further versions on request												
<b>Types of electrical circuits</b>												
2-wire-circuit			o.a.									
3-wire-circuit			3-L									
4-wire-circuit			4-L									
Further versions on request												
<b>Diameter of the measuring tip</b>												
3,0 mm			3,0									
4,0 mm			4,0									
5,0 mm			5,0									
6,0 mm			6,0									
Mention in mm												
<b>Measuring tube form (check graphic below)</b>												
Angled 118°								W				
Plan								P				
Convex								B				
Special version												
<b>Installation length</b>												
50 mm							50					
Mention in mm												
<b>Suitable compression fitting</b>												
M8x1								58				
M10x1								40				
M12x1								41				
M14x1,5								42				
G1/4								43				
G1/2								82				
Further versions on request												
<b>Cable length in mm</b>												
Mention in mm								XXXX				
<b>Cable type</b>												
Glass fiber - Glass fiber - stainless steel braid										without mention		
Glass fiber - Glass fiber - stainless steel braid - PTFE										GL-GL-PVA-TE		
R - Glass fiber - R - Glass fiber - stainless steel braid										RGL-RGL-PVA		
Check cable types												
<b>Connection</b>												
Free Ends, 60 mm										A		
Check ends										PRF		
LEMO plug + size + number of poles										LST2PS		
Round plug screw lock + size + number of poles										DST3PS		
M 12 Round plug + number of poles										EST-M12-4P		
Check plug types												
<b>Temperature measuring tip</b>												
Mention in °C											400°C	
<b>Order code (example)</b>	→	GF-7126	1	K1.A.	3-L.	6,0.	P.	50.	82.	3000.	A.	400°C

MEASURES



**DIGITAL DATA**  
2D, 3D and CAD

[to Download](#)