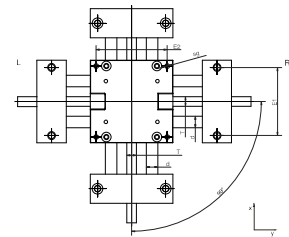


Order key
complete ▶ Page 1079

SHT-XY-12-AWM-PL-R



- High precision, extreme stiffness and accurate alignment due to the single-piece carriage
- Available as standard and preload version
- Lubrication free and corrosion resistant
- Adjustments by trapezoidal thread
- Assembly of upper unit with left or right adjustment possible
- Available accessories ▶ Page 1113

Dimensions [mm]

Part No.	Max. stroke length [mm]	A	H	E1	E2	Base length		R	f	lt	tk	ts	tg	kt
						lx	ly							
SHT-XY-08-AWM	150	65	42	52	56	96	96	32	1.5	15.5	10	5.5	M6	7
SHT-XY-12-AWM	350	85	56	70	73	145	145	42	2	30	11	6.6	M8	6.4
SHT-XY-12-AWM-PL	350	85	56	70	73	145	145	42	2	30	11	6.6	M8	6.4
SHT-XY-20-EWM-PL ⁹³⁾	500	130	86	108	115	202	202	72	2	36	15	9.0	M10	8.6

Part No.	sg	d	T	l1	d1		l2	d2		ha1	ha2	W
					Standard	Alternative		Standard	Alternative			
SHT-XY-08-AWM	M5	8	Tr6x2/Tr6.35x2.54	15.5	5	–	15	5	–	13	29	16
SHT-XY-12-AWM	M6	12	Tr10x2	17	Tr10x2	6 h9	17	Tr10x2	6 h9	18	38	20
SHT-XY-12-AWM-PL	M6	12	Tr10x2	17	Tr10x2	6 h9	17	Tr10x2	6 h9	18	38	20
SHT-XY-20-EWM-PL ⁹³⁾	M8	20	TR18x4	26	TR18x4	12 h9	26	12 h9	–	23	63	40

Required accessories (e.g. hand wheel) can be ordered left- or right-mounted in the y-direction.

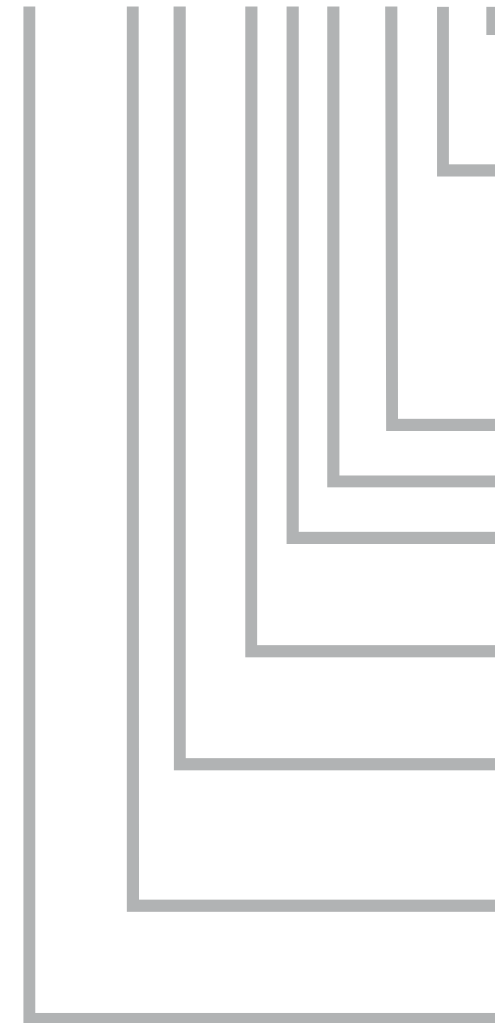
Order example for SHT-XY-12-AWM-L-200-300-HR, left adjustment, stroke 200/300 mm, 2 hand wheels

⁹³⁾ For size 20 we recommend stainless steel shafts (EWM), AWM also available



Order key XY-table

SHT-XY-12-AWM-PL-L-200-300-HR-ES



Lead screw material

- blank: Steel C15
- ES: Stainless steel 1.4305 (Standard with EWM)

Accessories/Options

- blank: Without extras (standard)
- HK: Lead screw clamp (2x)
- PA: Position indicator (2x)
- HR: Hand wheel (2x)
- HTX: High temperature version up to +180 °C
- Z: Pins in TR10x2

Stroke y-direction

Stroke x-direction

Adjustment y-unit

- L: Lead screw end on the left side
- R: Lead screw end on the right side

Preload

- blank: Standard
- PL: Preloaded

Shaft material

- AWM: Hard anodised aluminium
- SWM: Cf53 (1.1213)
- EWM: Stainless steel X105 (1.4125)

Dimensions

- 12: Size ø 12 mm
- 20: Size ø 20 mm

Type XY-Table