

SHTC-HYD – Hygienic design

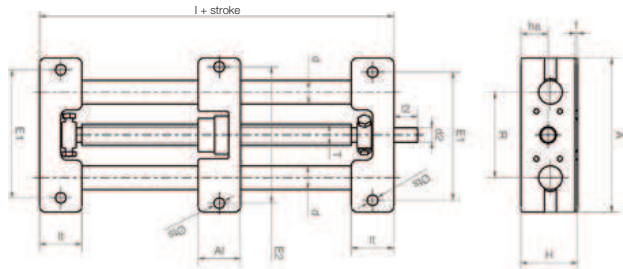


Order key
complete ▶ page 1172

SHTC-20-EWM-HYD



Based on the “hygienic design” idea, this version offers an easily cleaned solution. Even screw connections are designed easily accessible and the gap dimensions accordingly generous. The materials used are plastic and VA stainless steel.



The lead screw-lift unit can be supplied completely with FDA-approved materials.

Dimensions [mm]

Part number	A	Al	H	E1	E2	I	R	f	lt	ts	d	T	I2	d2	ha
SHTC-20-EWM-HYD	-0.3	-0.3		±0.15	±0.15										

Available accessories ▶ page 1203

Assembly in combination with following bearing materials:



iglidur® J

Standard up to +90 °C



iglidur® X

for temperatures up to +250 °C

High chemical resistance



iglidur® A180

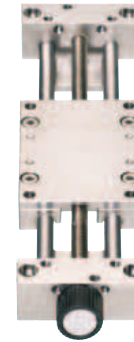
for applications with food contact (FDA)

delivery from stock
time

prices price list online
www.igus.eu/eu/drylinES

1138 Lifetime calculation, CAD files and much more support ▶ www.igus.eu/eu/drylinES

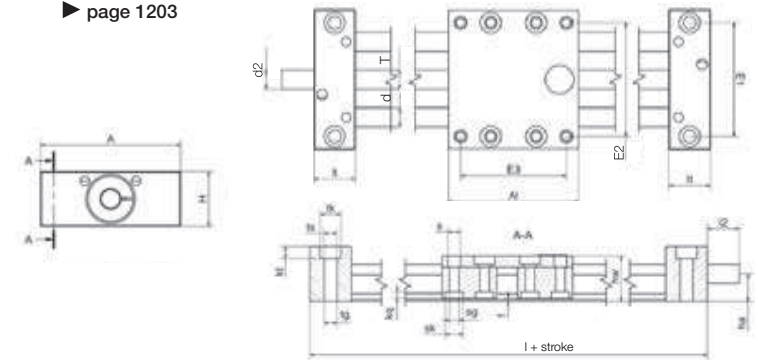
SLW-ES – Stainless steel



- Stainless steel version with corrosion-resistant steel components (1.4305, 1.4408 or rather 1.4571)
- Choice of bearing material:
iglidur® J = Standard
iglidur® A180 = FDA
iglidur® X = High temperature
- Available accessories
▶ page 1203

Order key
complete ▶ page 1184

SLW-ESJ-1040



Technical Data

Part number	Shaft-Ø	Max. stroke length	Weight	Additional (per 100 mm)	Max. static load capacity	
	[mm]	[mm]	[kg]	[kg]	axial [N]	radial [N]
SLW-ESJ-1040	10	750	1.4	0.2	700	2,800
SLW-ESX-1040	10	750	1.4	0.2	700	2,800
SLW-ESA180-1040	10	750	1.4	0.2	700	2,800
SLW-ESJ-2080	20	1,000	5.7	0.64	1,600	6,400
SLW-ESA180-2080	20	1,000	5.7	0.64	1,600	6,400

Dimensions [mm]

Part number	A	Al	H	E1	E2	E3	I	hw	f	lt	tk	ts	tg
SLW-ES-1040	-0.3	-0.3		±0.15	±0.15	±0.15				±0.1			
SLW-ES-1040	74	100	29	60	60	87	144	24	1.5	22	11	6.8	M8
SLW-ES-2080	134	150	46	116	116	132	206	44	1.5	28	15	8.6	M10

Part number	kt	s	sk	sg	kq	d	T	I2	d2	ha
	±0.1								Standard	
SLW-ES-1040	6.4	6.6	9.5	M6	4.4	10	TR10x2	17	TR10x2*	14.5
SLW-ES-2080	8.6	9.0	14	M8	5.5	20	TR18x4	26	12h9	23.0

* lead screw end unmachined

delivery 8–14 days
time

prices price list online
www.igus.eu/eu/drylinES

igus® GmbH Germany | Phone +49 2203 9649-145 Fax -334 | info@igus.de | www.igus.eu 1139