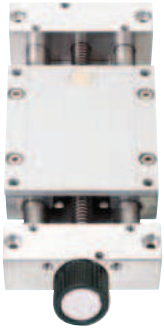


SLWE-BB – With ball bearing lead screw supports

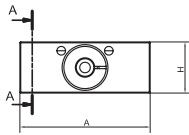
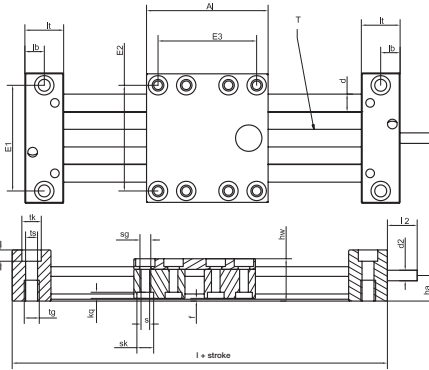


- Lower drive force
- Optimized clearance
- Up to 1.500 rpm (depending on length and load)
- Aluminium drylin® W guide rails, hard anodized
- Quiet operation – reduced vibration of the overall system
- Ball bearings in both shaft end supports
- Available accessories ► page 1203
- Lead screw nuts are available separately ► page 1097



Order key complete ► page 1184

SLWE-BB-1040



► page 1227



Technical Data

Part number	Design**	Max. length of stroke	Weight [kg]	Additional (per 100 mm) [kg]	Max. static load capacity		Max. rotation speed [1/min]	Max. feed rate [m/min]
		[mm]			axial [N]	radial [N]		
SLW-BB-0630	■	300	0.25	0.08	100	200	1,000	1.5
SLWE-BB-1040	●	500	0.90	0.10	500	2,000	1,500	3.0
SLWE-BB-1080	●	500	1.10	0.20	500	2,000	1,500	3.0
SLWE-BB-1660	●	750	1.80	0.30	700	2,800	1,500	6.0
SLWE-BB-2080	●	900	3.30	0.40	1,250	5,000	1,500	6.0

Dimensions [mm]

Part number	A	Al	H	E1	E2	E3	I	hw	f	lt	lb	tk	ts	tg
	-0.3	-0.3		±0.15	±0.15	±0.15				±0.1				
SLW-BB-0630	54	60	20	40	45	51	112	18	1.2	26	14	11	6.2	M8
SLWE-BB-1040	74	69	29	60	60	56	129	24	1.5	30	19	11	6.8	M8
SLWE-BB-1080	108	100	29	94	94	87	144	24	1.5	30	19	11	6.8	M8
SLWE-BB-1660	104	100	37	84	86	82	170	35	1.5	35	22.5	15	9.0	M10
SLWE-BB-2080	134	150	46	116	116	132	230	44	1.5	40	26	15	8.6	M10

Part number	kt	sk	sg	kq	s	d	T	l2	d2	d2*	ha
	±0.1								Standard		
SLW-BB-0630	8.0	7.0	M4	2.0	4.5	6.0	TR8x1.5	15	TR8x1.5	-	9.5
SLWE-BB-1040	6.4	9.5	M6	4.4	6.6	10	TR10x2	17	TR10x2	6 h9	14.5
SLWE-BB-1080	6.4	9.5	M6	4.4	6.6	10	TR 10x2	17	TR 10x2	6 h9	14.5
SLWE-BB-1660	8.6	11.0	M8	5.5	9.0	16	TR14x4	20	TR14x4	8 h9	18.5
SLWE-BB-2080	8.6	14.0	M8	5.5	9.0	20	TR18x4	26	12 h9	-	23.0

* optional machined lead screw end ** Square double rails page 958, round double rails page 962

SLWS – Compact with lead screw

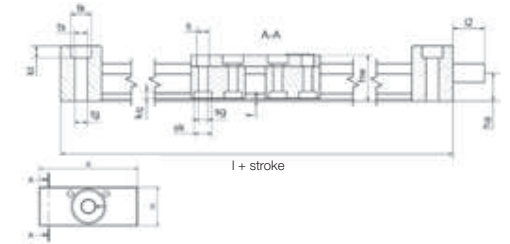
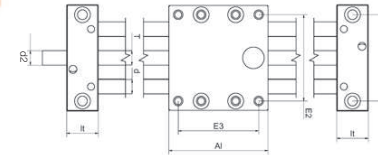
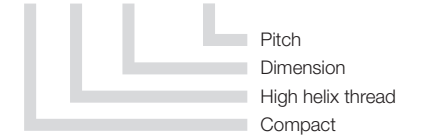


- Pitch 08x15, 10x12, 10x50, 18x100
- Flat and compact
- High torsional stability stiffness
- BB-version with ball bearings lead screw supports available
- Available accessories ► page 1203
- Lead screw nuts are available separately ► page 1097



Order key complete ► page 1184

SLWS-0630-08x15



Technical Data and Dimensions [mm]

Part number	Design**	Max. length of stroke	Weight [kg]	Additional (per 100 mm) [kg]	Max. stat. loadbearing capacity	
					axial [N]	radial [N]
SLWS-0630-08x15	■	300	0.2	0.08	50	200
SLWS-1040-10x12	●	750	0.7	0.10	100	400
SLWS-1040-10x50	●	750	0.7	0.10	100	400
SLWS-1080-10x12	●	750	0.9	0.20	100	400
SLWS-1080-10x50	●	750	0.9	0.20	100	400
SLWS-2080-18x100	●	750	0.9	0.20	400	1,600

Part number	A	Al	H	E1	E2	E3	I	hw	f	lt	tk	ts	tg
	-0.3	-0.3		±0.15	±0.15	±0.15				±0.1			
SLWS-0630-08x15	54	60	20	40	45	51	100	17.5	1.2	20	11	6.2	-
SLWS-1040-10x12	74	69	29	60	60	56	113	24	1.5	22	11	6.8	M8
SLWS-1040-10x50	74	69	29	60	60	56	113	24	1.5	22	11	6.8	M8
SLWS-1080-10x12	108	100	29	94	94	87	144	24	1.5	22	11	6.8	M8
SLWS-1080-10x50	108	100	29	94	94	87	144	24	1.5	22	11	6.8	M8
SLWS-2080-18x100	134	150	46	116	116	132	206	44	1.5	28	15	8.6	M10

Part number	kt	s	sk	sg	kq	d	T	l2	d2	ha
	±0.1									
SLWS-0630-08x15	8.0	4.5	7.0	M4	2.0	6	SG8x15	15	SG8x15*	9.5
SLWS-1040-10x12	6.4	6.6	9.5	M6	4.4	10	SG10x12	17	SG10x12*	14.5
SLWS-1040-10x50	6.4	6.6	9.5	M6	4.4	10	SG10x50	17	SG10x50*	14.5
SLWS-1080-10x12	6.4	6.6	9.5	M6	4.4	10	SG10x12	17	SG10x12*	14.5
SLWS-1080-10x50	6.4	6.6	9.5	M6	4.4	10	SG10x50	17	SG10x50*	14.5
SLWS-2080-18x100	12.6	11.0	15	M8	5.0	25	SG18x100	38	14h9	30.0

* lead screw end unmachined, ** Square double rails page 958, round double rails page 962