



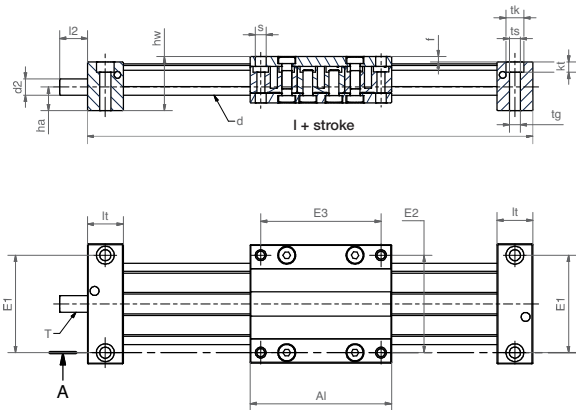
The drylin® SLW Protect uses the robust drylin® W profile as the perfect protective layer. The lead screw nut and lead screw are positioned below the W linear guide.

- drylin® W profile rail as a protective mechanism
- Available with pitches 10x2, 10x12, 10x50
- Low profile design
- 3 carriage lengths



**Order key**  
complete ▶ Page 1094

### SLW-BB-PT-1040



▶ Page 1137

### Technical data and dimensions [mm]

Part No.	Max. stroke length [mm]	Weight [kg]	Additional (per 100 mm) [kg]	Max. static load capacity		End block material
				axial [N]	radial <sup>97)</sup> [N]	
SLW-PT-1040	750	0.75	0.20	700	2,000	Aluminium
SLW-BB-PT-1040	750	1.10	0.20	500	2,000	Aluminium

Part No.	A	A1	H	E1/E2	E3	I	hw	f	It	tk	ts	tg
	-0.3	-0.3		±0.15	±0.15				±0.1			
SLW-PT-1040	74	87	29	60	74	131	33.25	3.25	22	11	6.8	M8
SLW-BB-PT-1040	74	87	29	60	74	147	33.25	3.25	30	11	6.8	M8

Part No.	kt	d	T	I2	d2	d2 <sup>98)</sup>	ha
	±0.1						
SLW-PT-1040	6.4	10	Tr10x2	17	Tr10x2	6 h9	14.50
SLW-BB-PT-1040	6.4	10	Tr10x2	17	Tr10x2	6 h9	14.50

<sup>97)</sup> Depends on load and rotation speed <sup>98)</sup> Thread/remaining thread visible



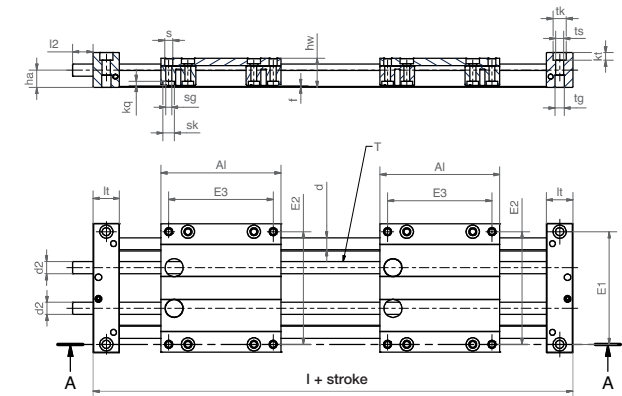
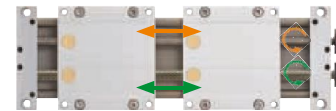
The SLWT-1080 double linear unit offers a high degree of flexibility for format adjustments. With its slim and compact design 2 linear units are rolled into one. The two carriages can be controlled independently.

- Different lead screw pitches can be applied
- Separate manual adjustment of carriages
- Lubrication free linear guide drylin® W
- Clearance adjustment (optional)



**Order key**  
complete ▶ Page 1094

### SLWT-1080



### Technical data and dimensions [mm]

Part No.	Max. stroke length [mm]	Weight (per 100 mm) [kg]	Additional [kg]	Max. static load capacity		End block material
				axial [N]	radial [N]	
SLWT-1080	750	1.6	0.25	700	2,000	Aluminium

Part No.	A	A1	H	E1	E2	E3	I	hw	f	It	tk	ts
	-0.3	-0.3		±0.15	±0.15	±0.15			±0.1			
SLWT-1080	108	100	29	94	94	87	244	24	1.5	22	11	6.8

Part No.	tg	kt	sk	s	sg	kq	d	T	I2	d2	d2	ha
	±0.1											
SLWT-1080	M8	6.4	9.5	6.6	M6	4.4	10	Tr10x2 <sup>92)</sup>	17	Tr10x2	6 h9	14.50

<sup>92)</sup> Lead screw end unmachined