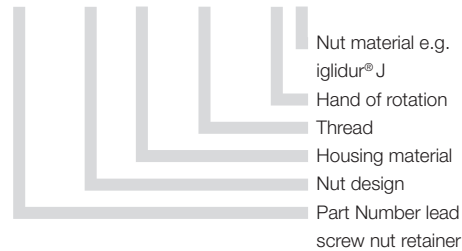


drylin®-lead screw nut retainer – single or fitted



Order key

MHM-1210-AL-TR10x2-R-J



- Conveniently use screws to standard lead screw nuts with nut retainers
- Can be screw-mounted from above
- One retainer can be used for various thread pitches
- Nearly limitless combinations

MH-ZB-0810-AL



MH-1210-AL



MH-2835-AL / MH-3244-AL

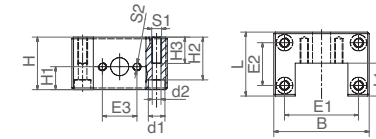


MH-2018-AL

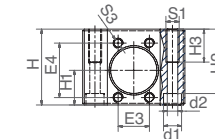

 delivery from stock
time

 prices price list online
www.igus.eu/eu/mh

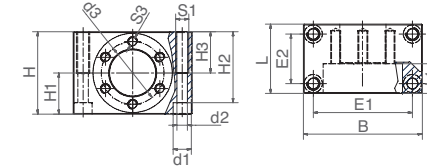
MH-1210-AL



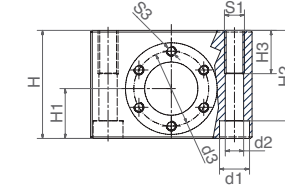
MH-2018-AL



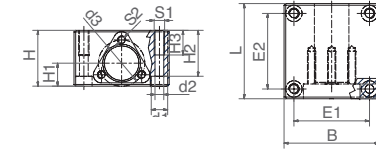
MH-2835-AL



MH-3244-AL



MH-ZB-0810-AL



Dimensions [mm]

Part number	H	H1	H2	H3	S1	S2	B	L	L1	E1	E2	E3	E4	d1	d2	d3	Can be combined with SLS	
																		± 0.3 ± 0.3
MH-1210-AL	New!	32	14	26	16	M6	M5	58	39	20	45	26	21	-	10	5.3	-	✓
MH-2018-AL	New!	46	21	39	20	M8	M6	62	45	18	47	30	19	33	11	6.4	-	✓
MH-2835-AL	New!	50	25	43	25	M8	M6	72	42	18	60	30	-	-	11	6.4	38	×
MH-3244-AL	New!	65	30	54.4	26	M12	M6	97	60	20	76	39	-	-	18	11	45	✓
MH-ZB0810-AL	New!	34	14	28	15	M6	M5	58	34	9	46	46	-	-	10	5.3	28.2	✓

Part number	Nut design	Thread
MH-1210-AL	SHT-1210-TRM	TR10x2 / TR10x3 / SG10x12 / SG10x50
MH-2018-AL	SHT-2018-TRM	TR18x4 / TR18x8P4 / SG18x24 / SG18x100
MH-2835-AL	FRM-2835	TR12x3 / TR12x6P3 / SG12x25 / TR14x3 / TR14x4 / TR16x2 / TR16x4 / TR16x8P4 / TR18x4 / TR18x8P4 / SG18x24 / SG18x100
MH-3244-AL	FRM-3244	TR20x4 / TR20x8P4 / TR24x5
MH-ZB0810-AL	Zero-Backlash	SG8x10 / SG8x15 / SG10x12 / SG10x50