

With locking mechanism



Order key

NT-LM-35-300

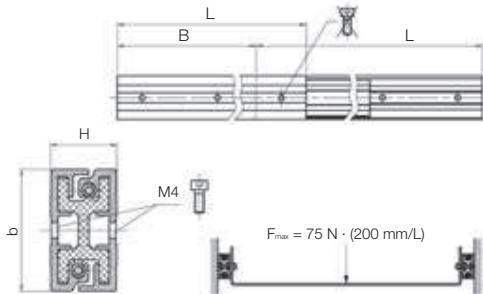
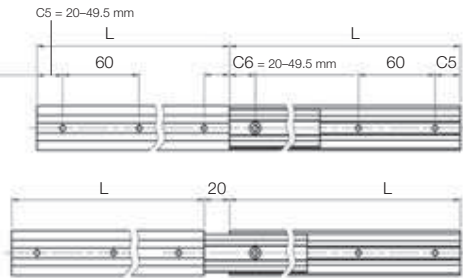


- Solid polymer/aluminum guide
- Low weight, quiet running
- Cost-effective
- Corrosion-resistant, 100% lubrication-free
- Continuous lengths up to 1,200 mm (extended total length)

The proven drylin® N telescopic system is now available with a locking mechanism.

There are two different versions:

- Detent in end and centre positions
- Precision detent with variable pitch (minimum pitch 10 mm)



drylin® NT LM in adjustment of Perspex guard



drylin® NT LM in guard door adjustment in machine tool

drylin® Detent in end and centre position at full extension – Dimensions [mm]

Part number	b	H	Lmin	Lmax
NT-LM-35-...mm	35	19	140	600

individual precision detent on request; The length divided by the locking distance must yield an even number. e.g. Lengths 250 mm, latching all 62,5mm = 250 / 62,5 = 4

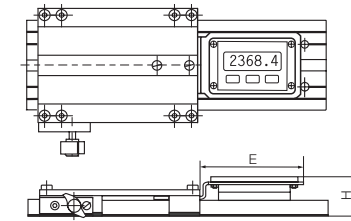
delivery time 3-8 days

prices price list online www.igus.eu/drylin-Specialists

The drylin® WKM measuring systems are battery powered. The integrated battery guarantees two year operating time. This means a virtually absolute distance measurement is possible. Magnetic tapes fitted as standard. The position value is displayed on a 5-digit LC display.

- Measuring principle: magnetic with magnetic tape (10 · 1.4 mm)
- Resolution: 0.1 mm
- Accuracy: ±(0.1 + 0.01 · measured length [m]) mm
- Service life: over 5 years at 100% switch-on time
- Application temperature: +0 to +60 °C
- Display: LCD
- Repeat accuracy: ±1 Digit
- Absolute and incremental measuring method
- Flexible and mobile use
- Variable zero point
- Carriage can be clamped
- Display optionally right (R) or left (L) of guide carriage
- Max. rail length 4,000 mm (Effective measurement max. 3,757 mm)

Type WKM-10 and -20



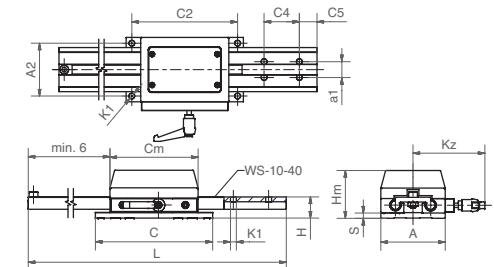
For the series 10 and 20 the rails are fixed and the measuring carriage moves.

Dimensions [mm]

Part number	drylin® linear guide	H	E
WKM-10-80-15-01-L	WK-10-80-15-01*	36	93
WKM-10-80-15-01-R	WK-10-80-15-01*	36	93
WKM-20-80-15-01-L	WK-20-80-15-01*	40	93
WKM-20-80-15-01-R	WK-20-80-15-01*	40	93

* Dimensions rail/slide ► drylin® W chapter, page 939

Type WKM-11



For the series 11, the carriage is fixed with 4 screws. The rail moves, the end of the rail is the fixing point.

Dimensions [mm]

Part number	L	C4	C5	a1	C2	A2	K1	C	A	H	S	Cm	Hm	kz
WKM-11-40	max. 2,000	40	20	18	120	60	6.6	133	73	24	6	100	54	82