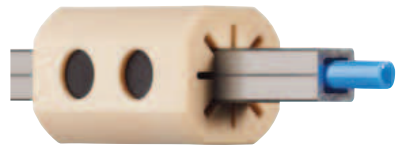
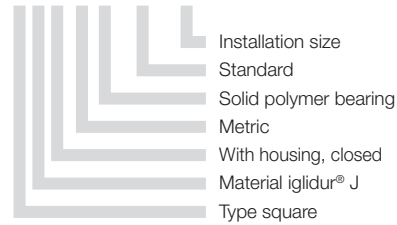


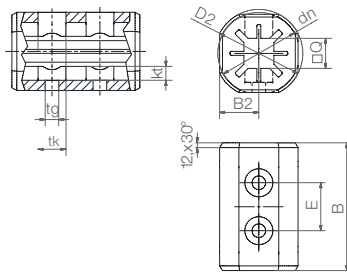
Q10 Housing bearing



Order key
QJRMP-01-10



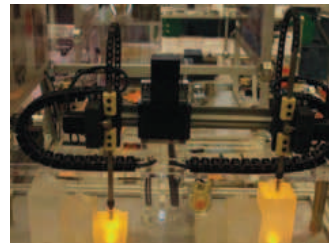
- Solid polymer bearing made of iglidur® J
- Very light
- Tolerates moments up to 3 Nm
- Space saving
- Torque resistant without 2nd guidance
- Lubricant free
- Fits to square profile AWMQ-10 ► page 1113
- Available with manual clamp (optional)



With manual clamp (optional)

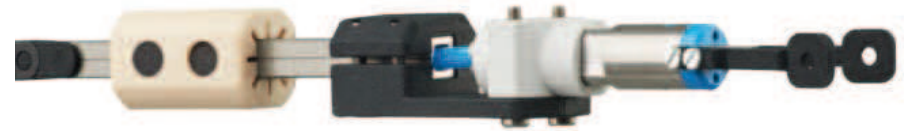
Dimensions [mm]

Part number	Weight [g]	M max. [Nm]	B	B2	D2	dn	E	Q	tk	tg	kt
QJRMP-01-10	11.3	3	32	9.8	22	22	12	7.5	6	3.4	3.5



Pipette unit equipped with drylin® Q square linear guides combined with drylin® GRW cantilever axis and NEMA step motor

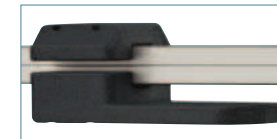
Accessories



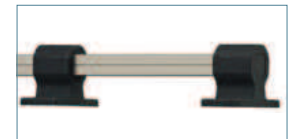
- Based on a torque resistant square guide with 7.5 mm edge lengths
- Hollow chamber for supply lines (media, compressed air, cable)
- Extensive accessories
- Small installation space
- A host of possible applications
- Lubricant free



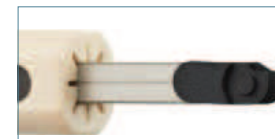
Adapter for flange end support
STZ-Q10-AR-1012-16



Adapter Kit e.g. for gripper/ sensors
STZ-Q10-01-AM



Crossbars made of plastic
STZ-Q10-01-FL
STZ-Q10-01-LL



Connection for e-chain® E2 micro
STZ-Q10-01-AC-E2



End caps for square section tube
STZ-Q10-01-C

delivery from time stock

prices price list online www.igus.eu/eu/QJRMP