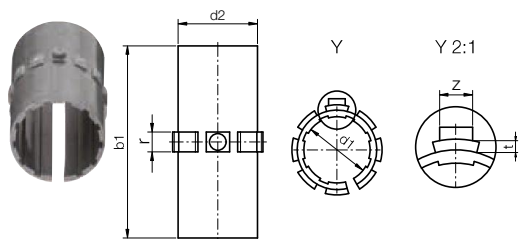


drylin® R linear | Product range

Long, closed design



Order key

Type	Size
E7 U M-01-10	
iglidur® E7	
Liner	
Metric	
Standard	
Diameter	

i ⁷⁹⁾ According to igus® testing method ▶ Page 924
 Cylindrical liner JSM ▶ Page 118
 Please note: Installation instructions ▶ Page 879
 Made from iglidur® E7 ▶ Page 1234

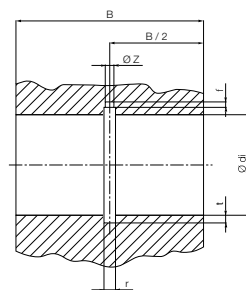
- Recommended in combination with steel stainless steel shafts
- Temperatures from -30 to +80 °C

Dimensions [mm]

Part No.	d1	d1-Tolerance ⁷⁹⁾	d2	b1	r	t	z	Weight [g]
E7UM-01-10	10	+0.030 +0.070	12	28	3.0	0.8	2.5	0.73
E7UM-01-12	12	+0.030 +0.070	14	31	3.0	0.8	3.0	1.01
E7UM-01-16	16	+0.030 +0.070	18	35	3.5	0.8	3.5	1.45
E7UM-01-20	20	+0.030 +0.070	23	44	5.0	0.8	3.5	3.25
E7UM-01-25	25	+0.030 +0.070	28	57	5.0	0.8	4.0	5.44
E7UM-01-30	30	+0.040 +0.085	34	67	5.0	0.8	4.0	9.88
E7UM-01-40	40	+0.040 +0.085	44	79	6.0	1.3	5.0	17.3
E7UM-01-50	50	+0.050 +0.100	55	99	7.0	1.3	6.0	-
E7UM-01-60 ⁷⁹⁾	60	+0.050 +0.100	65	124	8.0	2.5	6.5	-

Installation drawings housing bore for E7UM-01 | dimensions [mm]

Part No.	Shaft Ø	di H7	B h10	r +0.05	t +0.1	f +0.5	z +0.2
E7UM-01-10	10	12	29	3.0	1.0	1.0	2.6
E7UM-01-12	12	14	32	3.0	1.0	1.5	3.1
E7UM-01-16	16	18	36	3.5	1.0	1.7	3.6
E7UM-01-20	20	23	45	5.0	1.0	2.0	3.6
E7UM-01-25	25	28	58	5.0	1.0	2.0	4.1
E7UM-01-30	30	34	68	5.0	1.0	2.0	4.1
E7UM-01-40	40	44	80	6.0	1.5	2.5	5.1
E7UM-01-50	50	55	100	7.0	1.5	2.5	6.1
E7UM-01-60 ⁷⁹⁾	60	65	125	8.0	2.5	3.0	6.5



⁷⁹⁾ in two parts

Can be combined with:



RJUM-01/-03
TJUM-01/-03



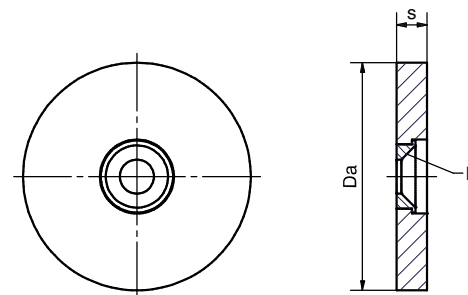
RJUM-06/-06-LL



FJUM-01/-02

drylin® R gliding pads | Product range

drylin® slide discs (RSDJ-round slide disc)



The drylin® - slide disks from stock made from the high performance material iglidur® J have very universal application fields. Without additional lubricant, heavy loads can be moved over a variety of surfaces (steel, aluminium, stainless steel, etc.) with very low friction. The plates are fixed securely with a screw through the reinforced hole in the middle.

Dimensions [mm]

Part No.	Outer-Ø Da	Wear limit	With s	For countersunk screw K	Max. stat. load [N]
RSDJ-40-06	40	1.5	6 ± 0.05	M6	28,500
RSDJ-60-08	60	2.5	8 ± 0.05	M8	66,000
RSDJ-80-08	80	2.5	8 ± 0.05	M8	120,000

Order key

Type	Size
RSD J-40-06	
Slide disc	
iglidur® J	
Outer-Ø	
Width	

i Material:
 iglidur® J ▶ Page 99