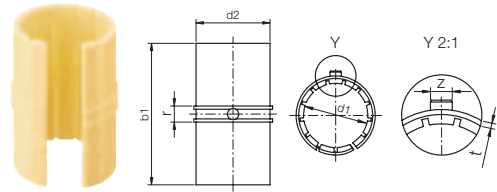
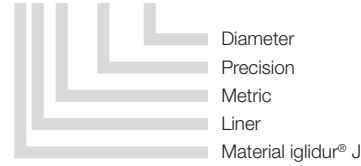


Closed, long design, precise



Order key

## JUM-11-10



- Max. bearing clearance reduced by 50% compared to JUM-01
- Increased bearing area = longer service life



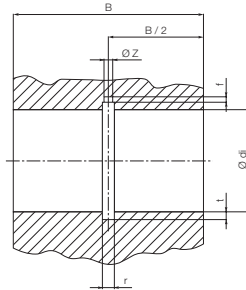
\* according to igus® testing method ▶ page 1035  
Please note: Installation instructions ▶ page 983

### Dimensions [mm]

Part number	d1	Tolerance*	d2	b1	r	t	z	Weight [g]
JUM-11-10	10	+0.000 +0.040	12	28	3.0	0.8	2.5	1.23
JUM-11-12	12	+0.000 +0.040	14	31	3.0	0.8	3.0	1.65
JUM-11-16	16	+0.000 +0.040	18	35	3.5	0.8	3.5	2.42
JUM-11-20	20	+0.000 +0.040	23	44	5.0	0.8	3.5	5.49
JUM-11-25	25	+0.000 +0.040	28	57	5.0	0.8	4.0	8.86
JUM-11-30	30	+0.000 +0.050	34	67	5.0	0.8	4.0	16.63
JUM-11-40	40	+0.000 +0.050	44	79	6.0	1.3	5.0	26.06
JUM-11-50	50	+0.000 +0.060	55	99	7.0	1.3	6.0	48.82

### Installation Drawings Housing Bore for Liner JUM-11 | Dimensions [mm]

Part number	Shaft Ø	d <sub>i</sub> H7	B h10	r +0.05	t +0.1	f +0.5	z +0.2
JUM-11-10	10	12	29	3.0	1.0	1.0	2.6
JUM-11-12	12	14	32	3.0	1.0	1.5	3.1
JUM-11-16	16	18	36	3.5	1.0	1.7	3.6
JUM-11-20	20	23	45	5.0	1.0	2.0	3.6
JUM-11-25	25	28	58	5.0	1.0	2.0	4.1
JUM-11-30	30	34	68	5.0	1.0	2.0	4.1
JUM-11-40	40	44	80	6.0	1.5	2.5	5.1
JUM-11-50	50	55	100	7.0	1.5	2.5	6.1



Can be combined with:



delivery from stock  
time

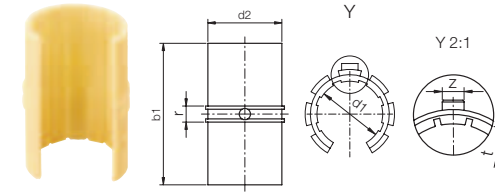
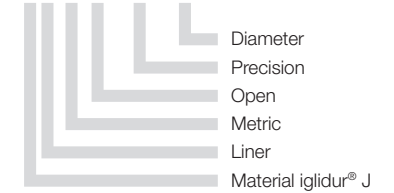
prices price list online  
www.igus.eu/eu/drylinR

Open, long design, precise –  
for supported shafts



Order key

## JUMO-11-10



- Increased bearing area = longer service life
- Max. bearing clearance reduced by 50%



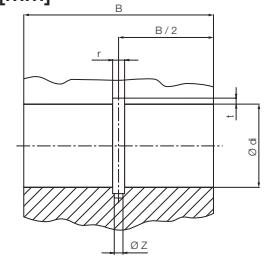
\* according to igus® testing method ▶ page 1035  
Please note: Installation instructions ▶ page 983

### Dimensions [mm]

Part number	d1	Tolerance*	d2	b1	r	t	z	Weight [g]
JUMO-11-10	10	+0.000 +0.040	12	28	3.0	0.8	2.5	1.10
JUMO-11-12	12	+0.000 +0.040	14	31	3.0	0.8	3.0	1.50
JUMO-11-16	16	+0.000 +0.040	18	35	3.5	0.8	3.5	2.20
JUMO-11-20	20	+0.000 +0.040	23	44	5.0	0.8	3.5	4.90
JUMO-11-25	25	+0.000 +0.040	28	57	5.0	0.8	4.0	8.23
JUMO-11-30	30	+0.000 +0.050	34	67	5.0	0.8	4.0	14.95
JUMO-11-40	40	+0.000 +0.050	44	79	6.0	1.3	5.0	23.16
JUMO-11-50	50	+0.000 +0.060	55	99	7.0	1.3	6.0	45.35

### Installation Drawings Housing Bore for Liner JUMO-11 | Dimensions [mm]

Part number	Shaft Ø	d <sub>i</sub> H7	B h10	W +0.2	r +0.05	t +0.1	f +0.5	z +0.2
JUMO-11-10	10	12	29	7.3	3.0	1.0	1.0	2.6
JUMO-11-12	12	14	32	9.0	3.0	1.0	1.5	3.1
JUMO-11-16	16	18	36	11.6	3.5	1.0	1.7	3.6
JUMO-11-20	20	23	45	12.0	5.0	1.0	2.0	3.6
JUMO-11-25	25	28	58	14.5	5.0	1.0	2.0	4.1
JUMO-11-30	30	34	68	16.6	5.0	1.0	2.0	4.1
JUMO-11-40	40	44	80	21.0	6.0	1.5	2.5	5.1
JUMO-11-50	50	55	100	25.5	7.0	1.5	2.5	6.1



Can be combined with:



delivery from stock  
time

prices price list online  
www.igus.eu/eu/drylinR