



DryLin® R | Linear Plain Bearing OJUI-01 | Inch



Special properties:

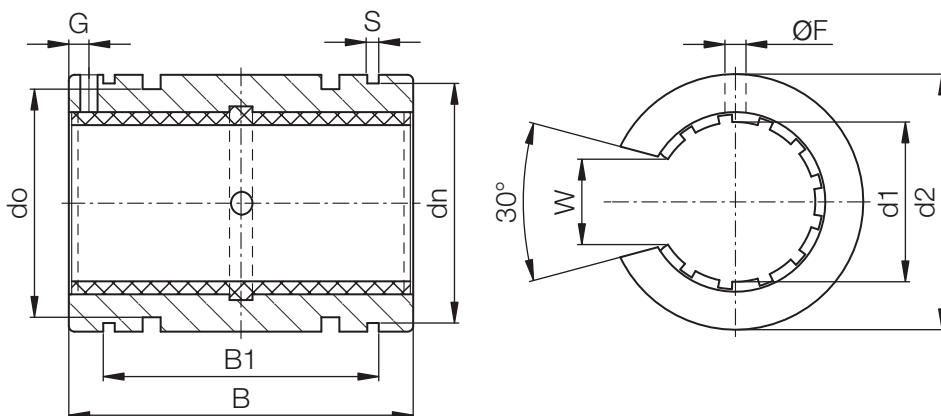
- Open, anodized aluminium housing for supported shafts
- Dimensions equivalent to standard recirculating ball bearings
- Equipped with JUIO liner made of iglidur® J
- Recommended housing bore H7
- Recommended tolerance for the shaft: h6 - h10
- Secure bearing with set screws (not included in the delivery)

Inch

DryLin® R

Phone +49 - 22 03 - 96 49-145
 Fax +49 - 22 03 - 96 49-334

igus® GmbH
 51147 Cologne



Dimensions [Inch]

Part No..	Ø Shaft [inch]	Tolerance* [inch]	d2 [inch]	B [inch]	W [inch]	s [inch]	dn [inch]	B1 [inch]	F [inch]	G [inch]	do [inch]
			h7	h10	±0,012		h10	H10	+0,004	+0,004	
OJUI-01-08	1/2	0,0016-0,0032	,8750	1,2500	,3940	,0520	,8200	,9790	,1360	,6250	,684
OJUI-01-10	5/8	0,0016-0,0032	1,1250	1,5000	,4330	,0620	1,0600	1,1240	,1360	,1250	,934
OJUI-01-12	3/4	0,0016-0,0032	1,2500	1,6250	,4920	,0620	1,1770	1,1860	,1360	,1250	1,059
OJUI-01-16	1	0,0016-0,0032	1,5625	2,2500	,6300	,0740	1,4710	1,7730	,1360	,1250	1,372
OJUI-01-20	1-1/4	0,0020-0,0041	2,0000	2,6250	,7090	,0740	1,8890	2,0230	,2010	,1875	1,809
OJUI-01-24	1-1/2	0,0020-0,0041	2,3750	3,0000	,8660	,0950	2,2410	2,4400	,2010	,1875	2,113
OJUI-01-32	2	0,0024-0,0051	3,0000	4,0000	1,1810	,1110	2,8390	3,2220	,2650	,3125	2,738

* According to igus® testing method ► Page 64.37

Internet www.igus.de
 E-mail info@igus.de