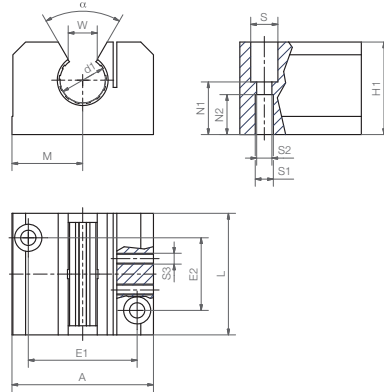
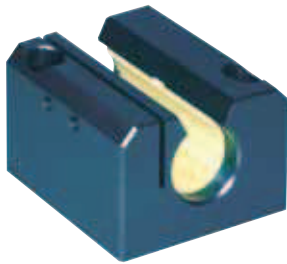
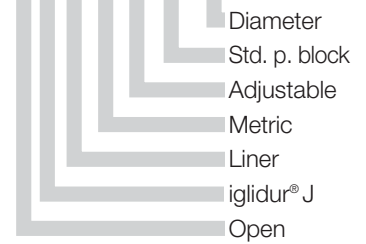




# DryLin® R | Adjustable Pillow Block OJUME-06 | mm



Structure – part no.  
O J U M E-06-12



mm

DryLin® R

Phone +49 - 22 03 - 96 49-145  
Fax +49 - 22 03 - 96 49-334

igus® GmbH  
51147 Cologne

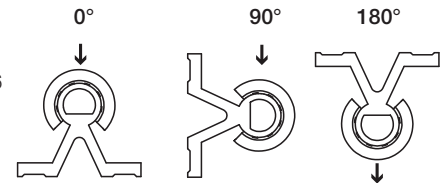
## Special properties

- Open pillow block made of anodized aluminium, standard
- Adjustable clearance: with 2 set screws (DIN 913) one side of the block can be adjusted.
- Liner JUMO-01 made of iglidur® J is fitted as standard
- Recommended tolerance for the shaft: h6-h10 (see igus® supported shafts ► Page 65.3)
- Also available with following liners:
  - XUMO-01: for high temperatures, material iglidur® X – Ex.: OXUM-06-16
  - JUMO-11: with reduced maximum clearance, material iglidur® J – Ex.: OJUM-16-16

\* According to igus® testing method

► Page 64.37

Available from stock



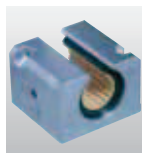
## Inner Diameter, Load Capacity and Weight

Part No. Standard Pillow Block	Shaft Ø [mm]	Tolerance* Bearing Inner Diameter [mm]	pmax. [N] Dynamic Load P = 5 MPa			pmax. [N] Static Load P = 35 MPa			Weight [kg]
			0°	90°	180°	0°	90°	180°	
OJUME-06-12	12	adjustable	960	635	240	6720	4445	1680	0,10
OJUME-06-16	16	adjustable	1440	990	396	10080	6943	2772	0,16
OJUME-06-20	20	adjustable	2250	1800	900	15750	12600	6300	0,27
OJUME-06-25	25	adjustable	3625	2953	1523	25375	20670	10658	0,53
OJUME-06-30	30	adjustable	5100	4250	2278	35700	29735	15946	0,82
OJUME-06-40	40	adjustable	8000	6810	3800	56000	47660	26600	1,49
OJUME-06-50	50	adjustable	12500	10750	6125	87500	75265	42875	2,75

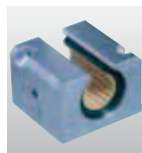
## Dimensions [mm]

Part No. Standard Pillow Block	d1 [mm]	H [mm]	H1 [mm]	A [mm]	M [mm]	E1 [mm]	E2 [mm]	S [mm]	S1 [mm]	S2 [mm]	S3 [mm]	N1 [mm]	N2 [mm]	W [mm]	α [°]	L [mm]
		+0,01				±0,15	±0,15								-1	
OJUME-06-12	12	18	28	43	21,5	32	23	8,0	M 5	4,3	M4	16,5	11	10,2	78	39
OJUME-06-16	16	22	35	53	26,5	40	26	10,0	M 6	5,3	M4	21,0	13	11,6	78	43
OJUME-06-20	20	25	42	60	30,0	45	32	11,0	M 8	6,6	M5	24,0	18	12,0	60	54
OJUME-06-25	25	30	51	78	39,0	60	40	15,0	M10	8,4	M6	29,0	22	14,5	60	67
OJUME-06-30	30	35	60	87	43,5	68	45	15,0	M10	8,4	M6	34,0	22	16,6	57	79
OJUME-06-40	40	45	77	108	54,0	86	58	18,0	M12	10,5	M8	44,0	26	21,0	56	91
OJUME-06-50	50	50	88	132	66,0	108	50	20,0	M16	13,5	M8	49,0	34	25,5	54	113

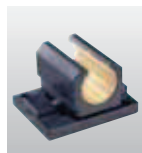
Plain bearings of series OJUM-06 can be combined with:



OGA-01:  
► P. 64.43



OGA-03:  
► P. 64.43



OJUM-06 LL:  
► P. 64.33

Internet [www.igus.de](http://www.igus.de)  
E-mail [info@igus.de](mailto:info@igus.de)