

Special properties

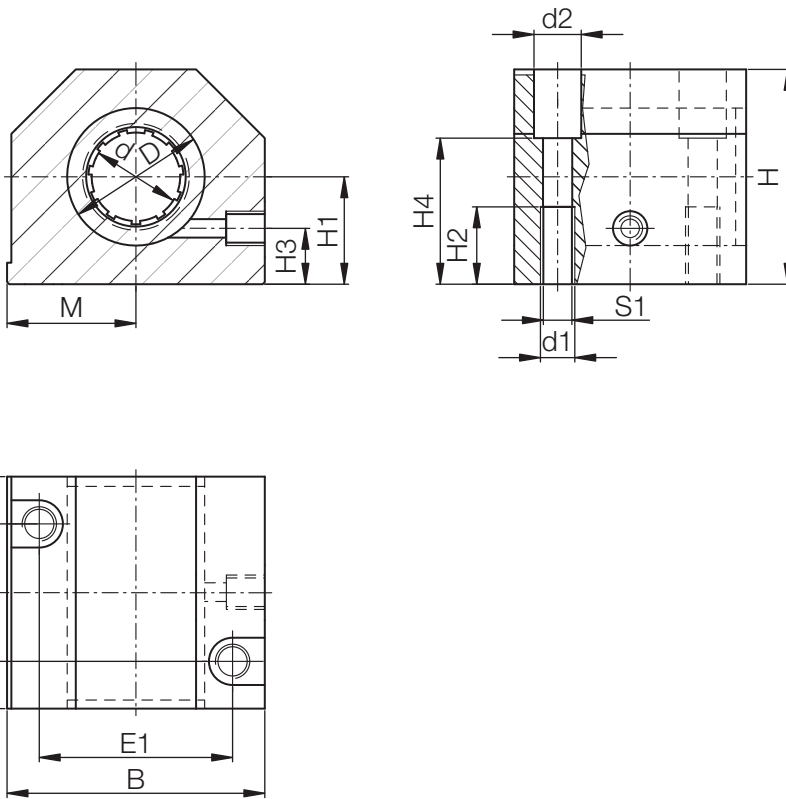
- Housing: aluminium
- Equipped with DryLin® R linear plain bearings, part no. RJUM-01-ø, RJUM-03-ø or RJM-01
- Can be combined with DryLin® R housing bearing, part no. RJUM-06-ø
- The bearing in the housing is secured using DIN 472 circlips
- Recommended tolerance for the shaft: h6 - h10 (see igus® shafts p. 64.44)
- Available from stock

mm

DryLin® R

Phone +49 - 22 03 - 96 49-145
Fax +49 - 22 03 - 96 49-334

igus® GmbH
51147 Cologne



Dimensions [mm]

Part No.	Self-aligning	All Polymer Bearing	d	D	H	H1	H2	H3	H4	S1	B	L	M	E1	E2	d1	d2
Standard with RJUM-01	with RJUM-03	with RJM-01	[mm]	[mm]	[mm]	[mm]	[mm]	[mm]	[mm]	[mm]	[mm]	[mm]	[mm]	[mm]	[mm]	[mm]	[mm]
			H6			+0,01					+0,3	±0,3	±0,02	±0,15			
RGA-01-08	-	RGA-04-08	8	16	28	13	10	8	14	M 4	35	32	17,5	25	20	3,2	6
RGA-01-12	RGA-03-12	RGA-04-12	12	22	35	18	11	10	25	M 5	43	39	21,5	32	23	4,2	6
RGA-01-16	RGA-03-16	RGA-04-16	16	26	42	22	13	12	30	M 6	53	43	26,5	40	26	5,2	10
RGA-01-20	RGA-03-20	RGA-04-20	20	32	50	25	18	13	34	M 8	60	54	30,0	45	32	6,8	11
RGA-01-25	RGA-03-25	RGA-04-25	25	40	60	30	22	15	40	M10	78	67	39,0	60	40	8,6	15
RGA-01-30	RGA-03-30	RGA-04-30	30	47	70	35	22	16	48	M10	87	79	43,5	68	45	8,6	15
RGA-01-40	RGA-03-40	RGA-04-40	40	62	90	45	26	20	60	M12	108	91	54,0	86	58	10,3	18

Internet www.igus.de
E-mail info@igus.de