

Structure – part no.
R J U M-06-12

-  Diameter
-  Std. p. block
-  Metric
-  Liner
-  iglidur® J
-  Closed



Special properties

- Closed, anodized aluminium housing, long version
- Liner JUM-01 made of iglidur® J is fitted as standard
- Recommended tolerance for the shaft: h6–h10 (see igus® shafts ► **chapter 65**)
- Also available with following liners:
 - XUM-01: for high temperatures, material iglidur® X – Example: RXUM-06-16
 - JUM-11: with reduced maximum clearance, material iglidur® J – Example: RJUM-16-16

* According to igus® testing method
► **Page 64.37**

Available from stock



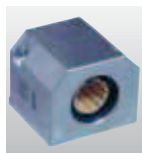
Inner Diameter, Load Capacity and Weight

Part No.	Shaft Ø [mm]	Tolerance* Bearing Inner Diameter [mm]	pmax. [N] Dynamic Load P = 5 MPa	pmax. [N] Static Load P = 35 MPa	Weight [kg]
Standard Pillow Block					
RJUM-06-12	12	0,030 - 0,088	960	6720	0,121
RJUM-06-16	16	0,030 - 0,088	1440	10080	0,211
RJUM-06-20	20	0,030 - 0,091	2250	15750	0,323
RJUM-06-25	25	0,030 - 0,091	3625	25375	0,651
RJUM-06-30	30	0,040 - 0,110	5100	35700	1,050
RJUM-06-40	40	0,040 - 0,115	8000	56000	1,820
RJUM-06-50	50	0,050 - 0,130	12500	87500	3,250

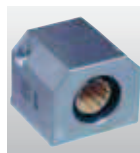
Dimensions [mm]

Part No.	d1 [mm]	H [mm]	H1 [mm]	A [mm]	M [mm]	E1 [mm]	E2 [mm]	S [mm]	S1 [mm]	S2 [mm]	N1 [mm]	N2 [mm]	L [mm]
Standard Pillow Block		+0,01 -0,014				±0,15	±0,15						
RJUM-06-12	12	18	35	43	21,5	32	23	8,0	M 5	4,3	16,5	11	39
RJUM-06-16	16	22	42	53	26,5	40	26	10,0	M 6	5,3	21,0	13	43
RJUM-06-20	20	25	50	60	30,0	45	32	11,0	M 8	6,6	24,0	18	54
RJUM-06-25	25	30	60	78	39,0	60	40	15,0	M10	8,4	29,0	22	67
RJUM-06-30	30	35	70	87	43,5	68	45	15,0	M10	8,4	34,0	22	79
RJUM-06-40	40	45	90	108	54,0	86	58	18,0	M12	10,5	44,0	26	91
RJUM-06-50	50	50	105	132	66,0	108	50	20,0	M16	13,5	49,0	34	113

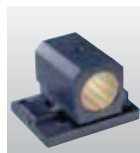
Plain bearings of series RJUM-06 can be combined with:



RGA-01:
► P. 64.42



RGA-03:
► P. 64.42



RJUM-06 LL:
► P. 64.28

DryLin® R
mm

Phone +49 - 22 03 - 96 49-145
Fax +49 - 22 03 - 96 49-334

