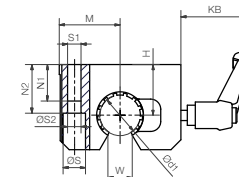
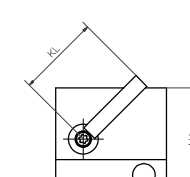
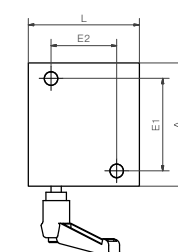
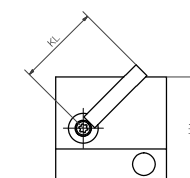
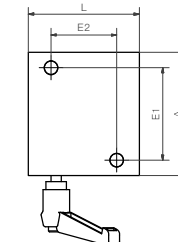


Geschlossen für Rundwellen:
Serie RJUM-06...HK



Offen für unterstützte Wellen
Serie OJUM-06...HK



.. auch Rundwellen klemmen

drylin® R Handklemmungen in 7 Baugrößen

Für drylin® R Rundwellenführungen in offener und geschlossener Bauform sind neu und erstmalig Lineargehäuse mit integrierter Handklemmung verfügbar. Die Gehäuse sind aus korrosionsbeständigem beschichtetem Aluminium gefertigt. Die Klemmung erfolgt über Reibschluß und mit einem Dreh kann jetzt an gewünschter Position fixiert und positioniert werden.

- Für Rundwellen in \varnothing 12 - 50 mm
- Gehäuse in offener Form für unterstützte Wellen
- Schmiermittel- und wartungsfrei durch JUM multifunktionale Gleitfolie
- Klemmung über Reibschluß

Typische Anwendungsbereiche:

Maschinenbau, Verpackungstechnik, Formatverstellungen, ...

drylin® R manual clamps in 7 sizes

New and unique linear housing with integrated manual clamping is available for drylin® R round shaft guides in open and closed design. The housings are made of corrosion resistant coated aluminium. Clamping is achieved by frictional engagement, and can now be fixed at the required position and positioned with a turn.

- For round shafts: \varnothing 12 - 50 mm
- Open housing bearings for supported shafts
- Lubricant/maintenance free due to JUM multifunctional liner
- Clamping by friction locking

Typical application areas:

Mechanical engineering, packaging technology, format adjustments, ...

Technische Daten Technical data

| Bestellnr. Part No. | d1-Toleranz d1-Tolerance | Fmax. dyn. [N] P=5 MPa | | | Fmax. stat. [N] P=35 MPa | | | Klemmkraft Clamping force | Gewicht [kg] Weight | |
|------------------------|-----------------------------|---------------------------|--------|---------|-----------------------------|--------|---------|------------------------------|------------------------|-------|
| | | 0° ** | 90° ** | 180° ** | 0° ** | 90° ** | 180° ** | | RJUM | OJUM |
| | | axial | | | | | | | | |
| R/O JUM-06-12-HK | 0,030-0,088 | 960 | 635 | 240 | 6720 | 4445 | 1680 | 400 | 0,127 | 0,098 |
| R/O JUM-06-16-HK | 0,030-0,088 | 1440 | 990 | 396 | 10080 | 6943 | 2772 | 400 | 0,207 | 0,164 |
| R/O JUM-06-20-HK | 0,030-0,091 | 2250 | 1800 | 900 | 15750 | 12600 | 6300 | 400 | 0,331 | 0,275 |
| R/O JUM-06-25-HK | 0,030-0,091 | 3625 | 2953 | 1523 | 25375 | 20670 | 10658 | 1.000 | 0,665 | 0,544 |
| R/O JUM-06-30-HK | 0,040-0,110 | 5100 | 4250 | 2278 | 35700 | 29735 | 15946 | 1.000 | 1,021 | 0,832 |
| R/O JUM-06-40-HK | 0,040-0,115 | 8000 | 6810 | 3800 | 56000 | 47660 | 26600 | 1.000 | 1,835 | 1,513 |
| R/O JUM-06-50-HK | 0,050-0,130 | 12500 | 10750 | 6125 | 87500 | 75265 | 42875 | 1.000 | 3,220 | 2,568 |

** Winkelangaben gelten nur für OJUM-06...-HK. Für RJUM-06...-HK gelten jeweils nur die Werte zu 0°.
** Data of angles only valid for OJUM-06...-HK. For RJUM-06...-HK use data at 0° angle.

Abmessungen Dimensions [mm]

| Bestellnr. Part No. | d1 | H | H1 | A | M | E1 | E2 | S | S1 | S2 | N1 | N2 | nur RJUM | | | |
|------------------------|----|----|-----|-----|------|-----|----|----|-----|------|------|----|-----------|-----|----|----|
| | | | | | | | | | | | | | only RJUM | | | |
| | | | | | | | | | | | | | W | L | KL | KB |
| R/O JUM-06-12-HK | 12 | 18 | 35 | 43 | 21,5 | 32 | 23 | 8 | M5 | 4,3 | 16,5 | 11 | 10,2 | 39 | 40 | 33 |
| R/O JUM-06-16-HK | 16 | 22 | 42 | 53 | 26,5 | 40 | 26 | 10 | M6 | 5,3 | 21 | 13 | 11,6 | 43 | 40 | 33 |
| R/O JUM-06-20-HK | 20 | 25 | 50 | 60 | 30 | 45 | 32 | 11 | M8 | 6,6 | 24 | 18 | 12 | 54 | 40 | 33 |
| R/O JUM-06-25-HK | 25 | 30 | 60 | 78 | 39 | 60 | 40 | 15 | M10 | 8,4 | 29 | 22 | 14,5 | 67 | 65 | 46 |
| R/O JUM-06-30-HK | 30 | 35 | 70 | 87 | 43,5 | 68 | 45 | 15 | M10 | 8,4 | 34 | 22 | 16,6 | 79 | 65 | 46 |
| R/O JUM-06-40-HK | 40 | 45 | 90 | 108 | 54 | 86 | 58 | 18 | M12 | 10,5 | 44 | 26 | 21 | 91 | 65 | 46 |
| R/O JUM-06-50-HK | 50 | 50 | 105 | 132 | 66 | 108 | 50 | 20 | M16 | 13,5 | 49 | 34 | 25,5 | 113 | 65 | 46 |

Bestellnummer Part No.
RJUM-...-HK (geschlossen closed)
OJUM-...-HK (offen open)

Lieferbar Available
ab Lager from stock

www.igus.de/drylinR
www.igus.eu/drylinR