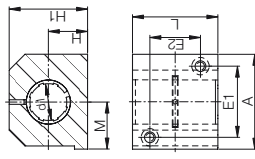
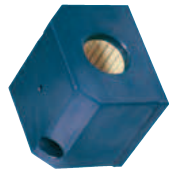


drylin® R Pillow Block | Product Range

Closed anodised aluminium housing,
long design



RJUM-06-12



Diameter
Long design
Metric
Liner
Material iglidur® J
Closed



Order key

- * according to igus® testing method ▶ page 1035
- ** design standards ▶ page 982
- Please note: Installation instructions ▶ page 983

Technical Data

Part number	Shaft Ø [mm]	Tolerance* bearing inner diameter [mm]	F max. dynamic** P = 5 MPa [N]	F max. static** P = 35 MPa [N]	Weight [g]
RJUM-06-12	12	+0.030 +0.088	960	6,720	121
RJUM-06-16	16	+0.030 +0.088	1,440	10,080	211
RJUM-06-20	20	+0.030 +0.091	2,250	15,750	323
RJUM-06-25	25	+0.030 +0.091	3,625	25,375	651
RJUM-06-30	30	+0.040 +0.110	5,100	35,700	1,050
RJUM-06-40	40	+0.040 +0.115	8,000	56,000	1,820
RJUM-06-50	50	+0.050 +0.130	12,500	87,500	3,250

Dimensions [mm]

Part number	d1	H	H1	A	M	E1	E2	S	S1	S2	N1	N2	L
RJUM-06-12	12	18	35	43	21.5	32	23	8.0	M5	4.3	16.5	11	39
RJUM-06-16	16	22	42	53	26.5	40	26	10.0	M6	5.3	21.0	13	43
RJUM-06-20	20	25	50	60	30.0	45	32	11.0	M8	6.6	24.0	18	54
RJUM-06-25	25	30	60	78	39.0	60	40	15.0	M10	8.4	29.0	22	67
RJUM-06-30	30	35	70	87	43.5	68	45	15.0	M10	8.4	34.0	22	79
RJUM-06-40	40	45	90	108	54.0	86	58	18.0	M12	10.5	44.0	26	91
RJUM-06-50	50	50	105	132	66.0	108	60	20.0	M16	13.5	49.0	34	113

Can be combined with:



RGA-01 RGA-03

Also available with liners:



XUM-01 JUM-11

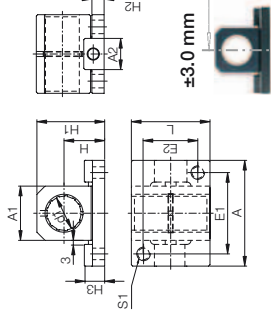
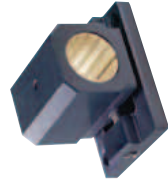
delivery time from stock



prices price list online
www.igus.co.uk/en/drylinR

drylin® R Pillow Block | Product Range

Floating pillow block RJUM-06-LL



RJUM-06-12-LL

Floating
Diameter
Long design
Metric
Liner
Material iglidur® J
Closed



Order key

- Compensation of parallelism errors up to 6 mm
- Quick assembly on raw profiles



- * according to igus® testing method ▶ page 1035
- ** design standards ▶ page 982
- Please note: Installation instructions ▶ page 983
- Floating bearing ▶ page 982

Technical Data

Part number	Shaft Ø [mm]	Tolerance* bearing inner diameter [mm]	F max. static or dynamic** [N]	Weight [g]
RJUM-06-12-LL	12	+0.030 +0.088	560	50
RJUM-06-16-LL	16	+0.030 +0.088	920	80
RJUM-06-20-LL	20	+0.030 +0.091	2,100	130
RJUM-06-25-LL	25	+0.030 +0.091	3,550	280
RJUM-06-30-LL	30	+0.040 +0.110	5,300	430
RJUM-06-40-LL	40	+0.040 +0.115	8,000	850
RJUM-06-50-LL	50	+0.050 +0.130	12,500	1,550

Dimensions [mm]

Part number	d1	H	H1	A	E1	E2	S1	L	A1	H3
RJUM-06-12-LL	12	18	28	43	32	23	M5	32	20	11
RJUM-06-16-LL	16	22	35	53	40	26	M6	36	26	11
RJUM-06-20-LL	20	25	41	60	45	32	M8	45	32	12.5
RJUM-06-25-LL	25	30	50	78	60	40	M10	58	40	15
RJUM-06-30-LL	30	35	59	87	68	45	M10	68	48	15
RJUM-06-40-LL	40	45	76	108	86	58	M12	80	62	20
RJUM-06-50-LL	50	50	89	132	108	60	M16	100	78	24

Can be combined with:



RGA-01 RGA-03

Also available with liners:



XUM-01 JUM-11

delivery time from stock



prices price list online
www.igus.co.uk/en/drylinR