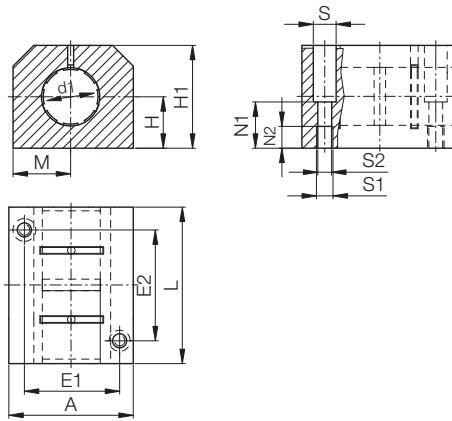
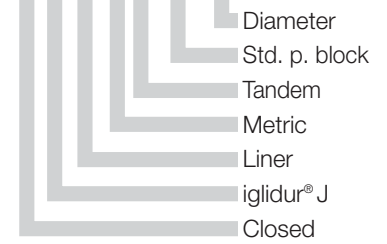




DryLin® R | Tandem Housing Bearing RJUMT-05 | mm



Structure – part no.
R J U M T-05-12



mm

DryLin® R

Phone +49 - 22 03 - 96 49-145
Fax +49 - 22 03 - 96 49-334

iglus® GmbH
51147 Cologne

Internet www.igus.de
E-mail info@igus.de

64.26

Special properties

- Tandem type of design
- Closed, anodized aluminium housing, long design
- 2 liners JUM-02 made of iglidur® J (Standard)
- Recommended tolerance for the shaft: h6-h10 (see iglus® shafts ► **chapter 65**)
- Also available with following liners:
 - XUM-02: for high temperatures, material iglidur® X – Example: RXUMT-05-16
 - JUM-12: with reduced maximum clearance, material iglidur® J – Example: RJUMT-15-16

* According to iglus® testing method

► **Page 64.37**

Available from stock



Inner Diameter, Load Capacity and Weight

Part No.	Shaft Ø [mm]	Tolerance* Bearing Inner Diameter [mm]	pmax. [N] Dynamic Load P = 5 MPa	pmax. [N] Static Load P = 35 MPa	Weight [kg]
RJUMT-05-12	12	0,03-0,088	840	5880	0,17
RJUMT-05-16	16	0,03-0,088	1200	8400	0,25
RJUMT-05-20	20	0,03-0,091	1500	10500	0,30
RJUMT-05-25	25	0,03-0,091	2500	17500	0,55
RJUMT-05-30	30	0,04-0,110	3750	26250	0,75
RJUMT-05-40	40	0,04-0,115	6000	42000	1,50
RJUMT-05-50**	50	0,05-0,130	8750	61250	2,40

Dimensions [mm]

Part No.	d1 [mm]	H [mm]	H1 [mm]	A [mm]	M [mm]	E1 [mm]	E2 [mm]	S [mm]	S1	S2	N1 [mm]	N2 [mm]	L [mm]
		+0,01 -0,014				±0,15	±0,15						
RJUMT-05-12	12	17	33	40	20	29	35	8,0	M 5	4,3	16,0	11	60
RJUMT-05-16	16	19	38	45	22,5	34	40	8,0	M 5	4,3	18,0	11	65
RJUMT-05-20	20	23	45	53	26,5	40	45	9,5	M 6	5,3	22,0	13	65
RJUMT-05-25	25	27	54	62	31	48	55	11,0	M 8	6,6	26,0	18	85
RJUMT-05-30	30	30	60	67	33,5	53	70	11,0	M 8	6,6	29,0	18	105
RJUMT-05-40	40	39	76	87	43,5	69	85	15,0	M 10	8,4	38,0	22	125
RJUMT-05-50**	50	47	92	103	51,5	82	100	18,0	M 12	10,5	46,0	26	145

** upon request