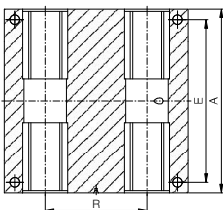
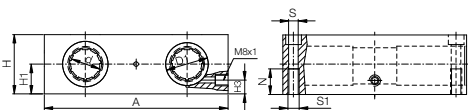




- Housing: Aluminium, equipped with four drylin® R linear plain bearings



Dimensions [mm]

Part No.	Self-aligning	Solid polymer bearing	d	D1	A	H	H1	H3	R	N	E	S	S1
Standard with RJUM-01	with RJUM-03	with RJM-01											
RQA-01-08	–	RQA-04-08	8	16	65	23	11.5	8	32	11	55	4.3	M5
RQA-01-10	RQA-03-10	RQA-04-10	10	19	70	25	12.5	10	34	13	60	4.3	M5
RQA-01-12	RQA-03-12	RQA-04-12	12	22	85	32	16	13	42	13	73	5.3	M6
RQA-01-16	RQA-03-16	RQA-04-16	16	26	100	36	18	15	54	13	88	5.3	M6
RQA-01-20	RQA-03-20	RQA-04-20	20	32	130	46	23	19	72	18	115	6.6	M8
RQA-01-25	RQA-03-25	RQA-04-25	25	40	160	56	28	24	88	22	140	8.4	M10
RQA-01-30	RQA-03-30	RQA-04-30	30	47	180	64	32	27	96	26	158	10.5	M12
RQA-01-40	RQA-03-40	RQA-04-40	40	62	230	80	40	35	122	34	202	13.5	M16

Are equipped with:



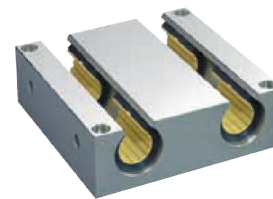
RJUM-01



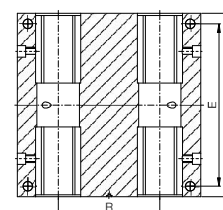
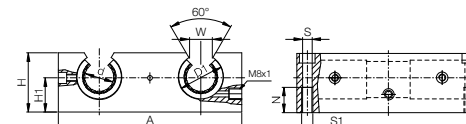
RJUM-03



RJM-01



- Housing: Aluminium, equipped with four drylin® R linear plain bearings



Dimensions [mm]

Part No.	Self-aligning	d	D1	A	H	H1	W	R	N	E	S	S1
Standard with OJUM-01	with OJUM-03											
OQA-01-12	OQA-03-12	12	22	85	30	18	14	42	13	73	5.3	M6
OQA-01-16	OQA-03-16	16	26	100	35	22	17	54	13	88	5.3	M6
OQA-01-20	OQA-03-20	20	32	130	42	25	17	72	18	115	6.8	M8
OQA-01-25	OQA-03-25	25	40	160	51	30	21	88	22	140	9.0	M10
OQA-01-30	OQA-03-30	30	47	180	60	35	21	96	26	158	10.5	M12
OQA-01-40	OQA-03-40	40	62	230	77	45	27	122	34	202	13.5	M16

Are equipped with:



OJUM-01



OJUM-03

Order key

Type Options Size

RQA - 01 - 10

Quad block with RJUM bearings
Aluminium housing
Standard with RJUM-01
Diameter

Options:

- 01: Standard with RJUM-01
- 03: with RJUM-03
- 04: with RJM-01

i Please note: Installation instructions ► Page 879

Order key

Type Options Size

OQA - 01 - 12

Quad block with OJUM bearings
Aluminium housing
Standard with OJUM-01
Diameter

Options:

- 01: Standard with OJUM-01
- 03: with OJUM-03

i Please note: Installation instructions ► Page 879