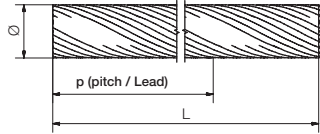


High helix lead screws



Order key

PTGSG-08x10-R-1000-ES



Material:
Stainless steel (1.4021)
Length
Hand of rotation
Lead
Diameter
Marking



Straightness 0,3 mm / 300 mm

High helix lead screws - Dimensions [mm]

Part number	Thread	Ø	Lead	Max. Length
PTGSG-05x5-R-[]**-ES	SG05x5	5.4	5	1,000
PTGSG-06.35x12.7-R-[]**-ES	SG06.35x12.7	6.4	12.7	1,000
PTGSG-08x10-R-[]**-ES	SG08x10	8.2	10	2,000
PTGSG-08x15-R-[]**-ES	SG08x15	8.0	15	2,000
PTGSG-10x12-R-[]**-ES	SG10x12	10.0	12	2,000
PTGSG-10x50-R-[]**-ES	SG10x50	10.0	50	2,000
PTGSG-12x25-R-[]**-ES	SG12x25	11.9	25	2,000
PTGSG-18x24-R-[]**-ES	SG18x24	18.7	24	2,000
PTGSG-18x100-R-[]**-ES	SG18x100	18.8	100	2,000

* also available with left-hand thread „-L”, ** Length in mm



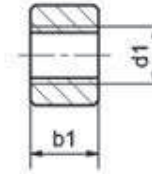
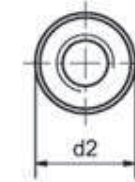
All drylin® leads screws can be custom machined. Please send us your drawing. We will submit an offer to you in a short time. We will also gladly offer metric lead screws, custom materials or more accurate versions.



delivery from stock
time



prices price list online
www.igus.eu/drylin-leadscrewdrives

High helix lead screw nuts, cylindrical, made from iglidur® J
igidur® J – Best wear in dry operation

Order key

JSRM-1812SG8x10



Thread
b1
d2
Metric
Hand of rotation
Type S = cylindrical
Material® iglidur J

Right-hand thread – Dimensions [mm]

Part number	Effective supporting surface [mm²]	d2	b1	Thread d1 x P	max. stat. F axial [N]
JSRM-1413SG5x5	132	14	13	SG5x5	100*
JSRM-1413SG6.35x12.7	89	14	13	SG6.35x12.7	100*
JSRM-1812SG8x10	139	18	12	SG8x10	275*
JSRM-1812SG8x15	110	18	12	SG8x15	275
JSRM-2215SG10x12	195	22	15	SG10x12	488
JSRM-2215SG10x50	106	22	15	SG10x50	265
JSRM-2220SG10x12	260	22	20	SG10x12	650
JSRM-2220SG10x50	142	22	20	SG10x50	355
JSRM-2624SG12x25	260	26	24	SG12x25	650
JSRM-3027SG18x24	730	30	27	SG18x24	1,825
JSRM-3027SG18x100	385	30	27	SG18x100	963
JSRM-4027SG18x100	385	40	27	SG18x100	963
JSRM-4036SG18x100	514	40	36	SG18x100	1,285

Left-hand thread – Dimensions [mm]

Part number	Effective supporting surface [mm²]	d2	b1	Thread d1 x P	max. stat. F axial [N]
JSLM-1812SG8x10	139	18	12	SG8x10	275*
JSLM-2215SG10x12	195	22	15	SG10x12	488
JSLM-2215SG10x50	106	22	15	SG10x50	265
JSLM-2220SG10x12	260	22	20	SG10x12	650
JSLM-2220SG10x50	142	22	20	SG10x50	355
JSLM-3027SG18x100	385	30	27	SG18x100	963
JSLM-4027SG18x100	385	40	27	SG18x100	963
JSLM-4036SG18x100	514	40	36	SG18x100	1,285

* reduced axial load due to nut geometry

Other thread sizes and nut geometries upon request



delivery from stock
time



prices price list online
www.igus.eu/eu/jsrm-sg
www.igus.eu/eu/jslm-sg