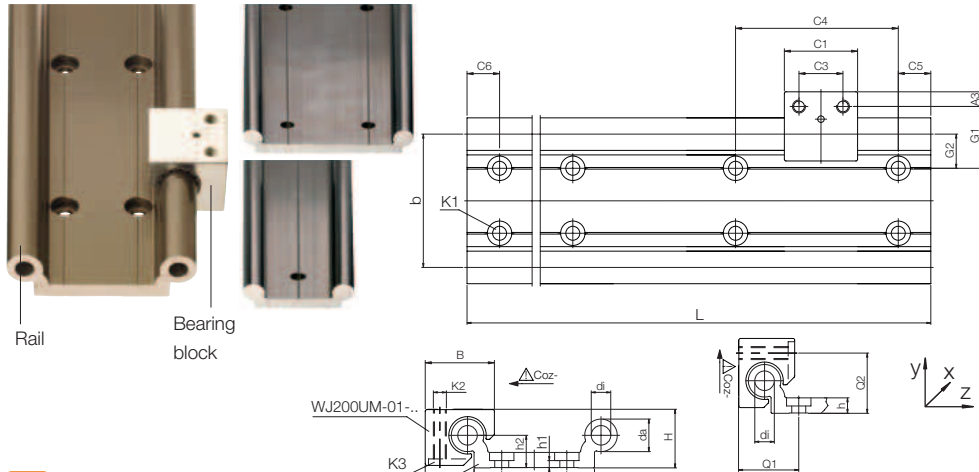


Double rail, round



i Hard anodised surface
▶ page 892

drylin® W Guide Rails – Dimensions [mm]

Part number	Weight [kg/m]	H* ±0.07	da	di	L max.	a	A1	b	h	h1	h2	G1	G2	a1**	Q1	Q2
WS-10-40	1.00	18	10-0.1	-	4,000	40-0.5	16.5	40	5.5	5.5***	9	30	20	-	-	-
WS-10-80	1.50	18	10-0.1	-	4,000	74-0.7	16.5	74	5.5	5.5***	9	27	17	40	-	-
WS-10-120 New!	2.02	18	10-0.1	-	4,000	120-0.7	16.5	120	5.5	5.5***	9	30	20	80	-	-
WS-16-60	1.96	27	16-0.1	8.0	4,000	54-0.5	25.0	58	7.5	3.5	14	43	29	-	32	28
WS-20-80	3.30	36	20-0.1	10.2	4,000	74-0.7	30.0	82	9.5	4.5	20	38	21	40	37	37
WS-25-120	5.8	45	25-0,15	14.0	4,000	120-0.7	37.5	131	11.5	5.5	25	46.5	25.5	80	45.5	46

* Height dimension minus the bearing clearance tolerance

** WS-10-40 and WS-16-60 a single row of mounting holes down the centreline;
WS-10-80/-10-120/-20-80/-25-120 two parallel rows of mounting holes

Part number	C4	C5		C6		K1 for Screw	ly	lz	Wby	Wbz
		min.	max.	min.	max.	DIN 912	[mm ²]	[mm ²]	[mm ²]	[mm ²]
WS-10-40	120	20	79.5	20	79.5	M6***	91,000	5,100	3,600	590
WS-10-80	120	20	79.5	20	79.5	M6***	388,000	6,100	9,200	650
WS-10-120 New!	120	20	79.5	20	79.5	M6***	1,303,000	7,100	20,000	720
WS-16-60	120	20	79.5	20	79.5	M8	367,600	26,100	9,900	1,900
WS-20-80	120	20	79.5	20	79.5	M8	1,080,000	78,700	21,000	4,000
WS-25-120	150	25	99.5	25	99.5	M10	4,867,000	215,000	62,400	8,500

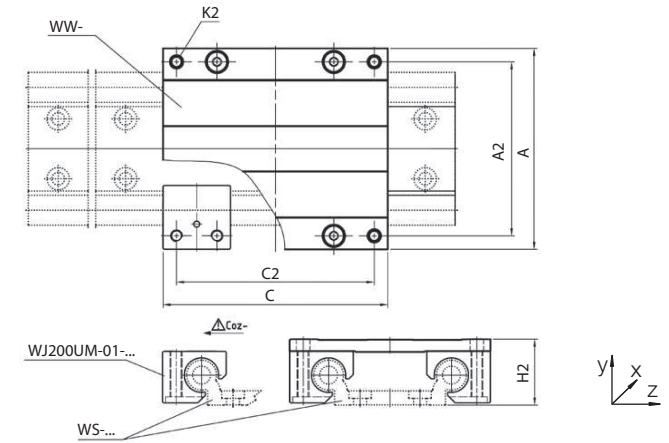
Standard bore pattern symmetrical: C5 = C6; please order C5 ≠ C6 with drawing

*** Through bore

Fits to housing bearing, round ▶ page 955

double carriage, round ▶ page 963

Guide carriage, fitted, round

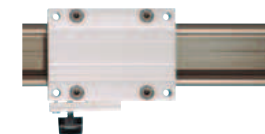


drylin® W Guide Carriage, Fitted – Load Data and Dimensions [mm]

Part number	Part number Suitable Rail	Weight [kg]	Width Length		A2	C2	K2	H2 ±0.17	Stat. Load Capacity				
			A	C					Coy [N]	Coz [N]	Mox [Nm]	Moy [Nm]	Moz [Nm]
WW-10-40-10*	WS-10-40	0.29	73	100	60	87	M6	24	4,800	2,400	96	170	170
WW-10-40-15*	WS-10-40	0.34	73	150	60	137	M6	24	4,800	2,400	96	290	290
WW-10-40-20*	WS-10-40	0.40	73	200	60	187	M6	24	4,800	2,400	96	410	410
WW-10-80-10*	WS-10-80	0.34	107	100	94	87	M6	24	4,800	2,400	178	170	170
WW-10-80-15*	WS-10-80	0.42	107	150	94	137	M6	24	4,800	2,400	178	290	290
WW-10-80-20*	WS-10-80	0.50	107	200	94	187	M6	24	4,800	2,400	178	410	410
WW-10-120-10 New!	WS-10-120	0.41	153	100	140	87	M6	24	4,800	2,400	288	170	170
WW-10-120-15 New!	WS-10-120	0.54	153	150	140	137	M6	24	4,800	2,400	288	290	290
WW-10-120-20 New!	WS-10-120	0.66	153	200	140	187	M6	24	4,800	2,400	288	410	410
WW-16-60-10	WS-16-60	0.71	104	100	86	82	M8	35	8,400	4,200	240	270	270
WW-16-60-15*	WS-16-60	0.84	104	150	86	132	M8	35	8,400	4,200	240	480	480
WW-16-60-20*	WS-16-60	0.97	104	200	86	182	M8	35	8,400	4,200	240	690	690
WW-20-80-15*	WS-20-80	1.20	134	150	116	132	M8	44	12,800	6,400	525	670	670
WW-20-80-20*	WS-20-80	1.30	134	200	116	182	M8	44	12,800	6,400	525	990	990
WW-20-80-25*	WS-20-80	1.50	134	250	116	232	M8	44	12,800	6,400	525	1,250	1,250
WW-25-120-15	WS-25-120	2.54	195	150	173	128	M10	55	19,200	9,600	1,250	880	880
WW-25-120-20	WS-25-120	2.80	195	200	173	178	M10	55	19,200	9,600	1,250	1,360	1,360
WW-25-120-25	WS-25-120	3.07	195	250	173	228	M10	55	19,200	9,600	1,250	1,840	1,840

Also available as version with adjustable clearance in installation sizes 10, 16 and 20:

Order example, WWE-10-40-15



* drylin® W manual clamp, assembled (optional) suffix -HKA
▶ page 968

Fits to double rail round ▶ page 962