

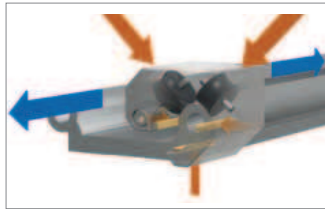
Hybrid linear bearing – roll and slide

drylin® W hybrid bearings offer a unique combination of plain and roller bearings. When used in the correct orientation, the driving force requirements are significantly reduced by the maintenance free roller. The shear forces and any shock loads are supported by the plain self lubricating liner. The drylin® hybrid bearing is ideal for applications which involve manual drive, such as in a machine guard door. The new drylin® W hybrid bearing housing WJRM-21-20 with 2 diagonally applied plastic rollers is ideal for the adjustment of control panels or camera carriage. The adjustment to the coated drylin® W profile rails are done completely without lubrication and maintenance.

- Solid tribo-polymer rollers
- Liner made of iglidur® J
- Low drive force needed, friction: 0.04–0.05 μ
- Cost-effective
- Can be combined with 8 linear profile rails



strength absorption hybrid bearing



strength absorption hybrid double roller bearing

drylin® W Compatible Guide Rails – Dimensions [mm]

Part number	Weight [g]	H	da	L	a	h	h2	G1	G2	C4	C5		C6	K1 for screw DIN 912	
											min.	max.			min.
WS-10	0.62	18	10	4,000	27	5.5	9	27	17	120	20	79.5	20	79.5	M6
WS-16	0.98	27	16	4,000	27	7.5	14	33	19	120	20	79.5	20	79.5	M8
WS-20	1.32	36	20	4,000	27	9.5	20	38	21	120	20	79.5	20	79.5	M8
WS-10-40	1.00	18	10	4,000	40	5.5	9	30	20	120	20	79.5	20	79.5	M6
WS-10-80	1.50	18	10	4,000	74	5.5	9	27	17	120	20	79.5	20	79.5	M6
WS-10-120	2.02	18	10	4,000	120	5.5	9	30	20	120	20	79.5	20	79.5	M6
WS-16-60	1.96	27	16	4,000	54	7.5	14	43	29	120	20	79.5	20	79.5	M8
WS-20-80	3.38	36	20	4,000	74	9.5	20	38	21	120	20	79.5	20	79.5	M8



Adjustment camera slider ► www.igus.co.uk/camera



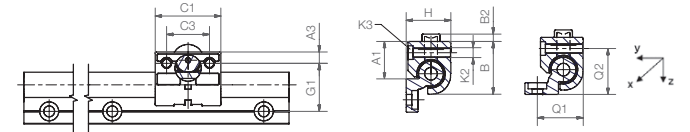
Adjustment of control panel unit

delivery from stock time

prices price list online www.igus.co.uk/en/drylinW

order key complete ► page 972

Hybrid linear bearing



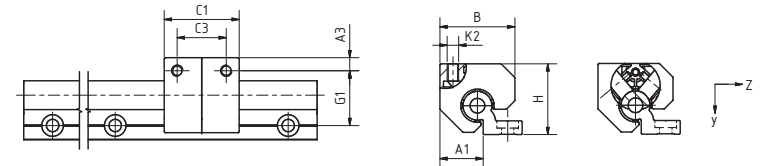
This orientation is not possible for combination of WJRM-01-10 with rail WS-10/WS-10-40/WS-10-80/WS-10-120

Load Data and Dimensions [mm]

Part number	Stat. load capacity Co [N]	Dyn. load capacity Cz+ at total running distance (km)				F · v [N · m/s]
		10 [N]	100 [N]	200 [N]	max.	
WJRM-01-10	250	250	90	50	50	
WJRM-01-16	400	400	140	70	80	
WJRM-01-20	550	550	200	100	80	

Part number	Friction in z-direction [μ]	Weight [g]	A1	A3	B	B2	C1	C3	G1	H	K2 for Thread	K3 for Screw	Q1	Q2
WJRM-01-16	< 0.1	131	25	9	34.5	5	48	30	33	27	M8	M6	32	28
WJRM-01-20	< 0.1	232	30	9	42.5	6	52	34	38	36	M8	M6	37	37

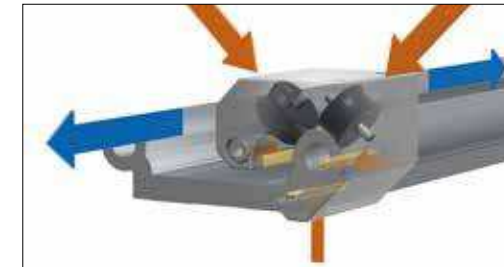
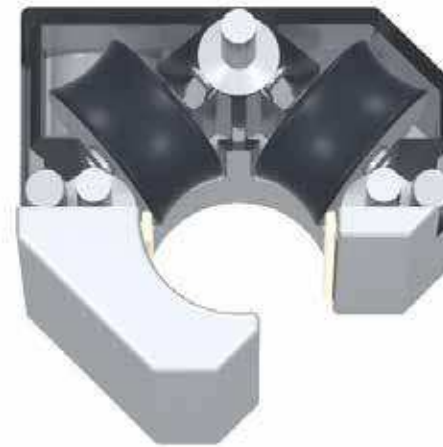
drylin® W hybrid double roller bearing



Load Data and Dimensions [mm]

Part number	Stat. load capacity Co [N]	Dyn. load capacity Cz+ at total running distance (km)				F · v [N · m/s]
		10 [N]	100 [N]	200 [N]	max.	
WJRM-21-20 New!	840	840	300	150	80	

Part number	Friction in z-direction [μ]	Weight [g]	A1	A3	B	C1	C3	G1	H	K2 for Screw



2 Rollen + 3 Größe n ... rollen & gleiten

drylin® W-Doppel-Hybridlager in neuen Baugrößen

Der äußerst leichte Lauf durch zwei schräg angesetzte wartungsfreie Rollen charakterisiert die neuen Generation an drylin® W-Hybridlagern. Durch variable Konstruktionsmöglichkeiten überzeugt das Lager in Baugröße 20 bereits in vielen Anwendungen. Seitliche Antriebe sind möglich und Querkräfte können über Gleitelemente aufgenommen werden. Die Doppelrollenlager sind auch in den kompakten Baugrößen \varnothing 10 und 16 mm lieferbar und eignen sich bei reduziertem Bauraum.

- Leichter leiser schmierfreier Lauf
- drylin® Hybridfunktion, Rollen und Gleiten
- Als Einzellager oder vormontierter Hybridschlitten verfügbar
- Für horizontalen und seitlichen Einbau
- Passend für drylin® W-Profileschienen

Typische Anwendungsbereiche:

Möbelbau, Schutztüren, Monitorverstellung, Bedienpanels, ...

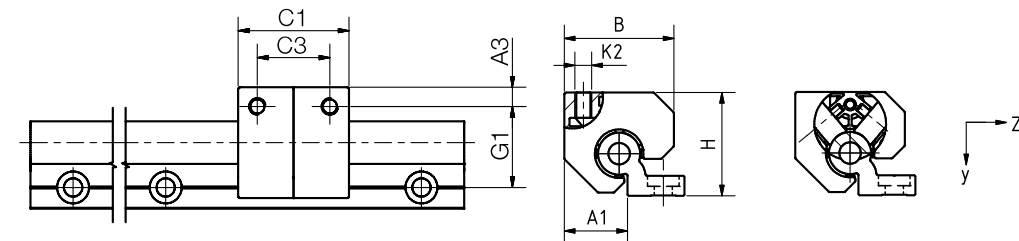
drylin® W double hybrid bearings in new sizes

The extremely lightweight running due to the two diagonally applied maintenance free rollers characterises the new generation of drylin® W hybrid bearings. Variable construction options of the bearing in installation size 20 are already impressive in many applications. Lateral drives are possible and transverse forces can be absorbed by gliding elements. The double roller bearings are also available in compact installation sizes \varnothing 10 and 16 mm and are suitable for reduced installation space.

- Light, quiet, lubricant free operation
- drylin® hybrid function, rolling and gliding
- Available as individual bearing or pre-assembled hybrid carriage
- For horizontal and side-mounted installation
- Suitable for drylin® W profile rails

Typical application areas:

Furniture, safety doors, monitor adjustment, control panels, ...



Abmessungen Dimensions [mm]

Bestellnr. Part No.	Reibwert in z-Richtung Friction in z-direction [μ]	Gewicht Weight [g]	A1	A3	B	C1	C3	G1	H	K2 für Gewinde for screw
NEW WJRM-21-10	< 0,1	115	16,5	6,5	31	35	22	27	28	M6
NEW WJRM-21-16	< 0,1	250	25	9	44	48	30	32	41	M8
WJRM-21-20	< 0,1	320	30	9	52	52	34	38	49	M8

Bestellnr. Part No.	stat. Tragfähigkeit stat. load capacity Co	dyn. Tragfähigkeit Cz+ bei Gesamtlaufstrecke (km) dyn. load capacity Cz+ for a total running dist. (km)	F · v
		100	max.
		[N]	[N · m/s]
NEW WJRM-21-10	350	125	50
NEW WJRM-21-16	600	105	80
WJRM-21-20	840	150	80

Auch als Hybridschlitten verfügbar ► www.igus.de/WWH Also available as hybrid carriage ► www.igus.eu/WWH

Lieferbar Available
ab Lager from stock

www.igus.de/WJRM
www.igus.eu/WJRM