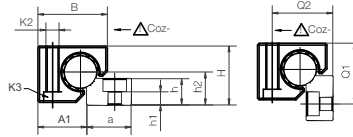


i Material for housing and shaft support 1.4408 (AISI 316)
Shaft material 1.4571 (AISI 316Ti)
Size 25
Material for shaft, shaft support, housing 1.4571 (AISI 316Ti)



Technical data and dimensions [mm]

Part No.	Weight [kg/m]	H ⁵⁷⁾ ±0.25	da -0.1	L max.	a -0.3	h	h1	h2	G1	G2	A1	Q1	Q2
WS-10-ES-FG	0.87	18	10	3,000	27	5.5	5.5	9	27	17	16.5	-	-
WS-16-ES-FG	2.22	27	16	3,000	27	12	4.5	14	33	19	25	32	28
WS-20-ES-FG	3.37	36	20	3,000	27	16	8	20	38	21	30	37	37
WS-25-ES	5.21	45	25	3,000	32	11.5	5.5	25	46.5	25.5	37.5	45.5	46

Part No.	C4	C5 min.	C5 max.	C6 min.	C6 min.	K1 for screw DIN 912	ly [mm²]	lz [mm²]	Wby [mm²]	Wbz [mm²]
WS-10-ES-FG	120	20	79.5	20	79.5	M6 ⁵⁸⁾	491	491	98	98
WS-16-ES-FG	120	20	79.5	20	79.5	M8	3,217	3,217	402	402
WS-20-ES-FG	120	20	79.5	20	79.5	M8	7,854	7,854	785	785
WS-25-ES	150	25	99.5	25	99.5	M10	19,175	19,175	1,534	1,534

⁵⁷⁾ Height dimension minus the bearing clearance tolerance

⁵⁸⁾ Plain holes

Can be combined with:

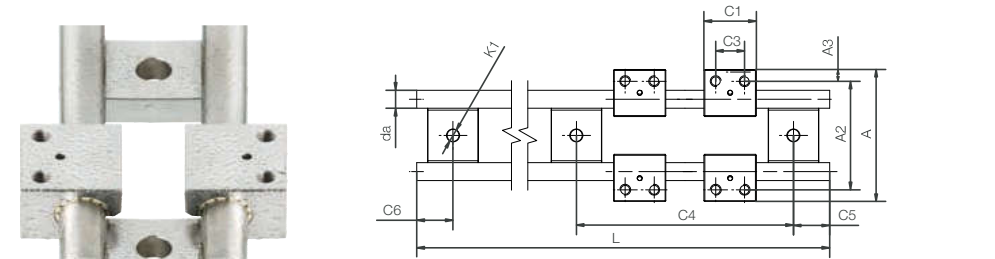


WJ200UM(T)-... WJ200UME-... WJUM-...-ES-FG WJRM-...

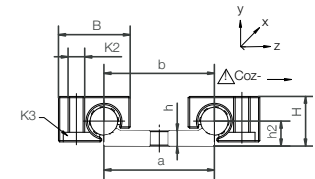
Suitable liner materials



igidur® J iglidur® E7 iglidur® A180



i Size 10-20
Material for housing and shaft support 1.4408 (AISI 316)
Shaft material 1.4571 (AISI 316Ti)
Size 25
Material for shaft, shaft support, housing 1.4571 (AISI 316Ti)



Technical data and dimensions [mm]

Part No.	Weight [kg/m]	H ⁵⁷⁾ ±0.25	da h9	L max.	a -0.3	b	h	h2	A	A2
WS-10-40-ES-FG	1.58	18	10	3,000	40	40	5.5	9	73	60

Part No.	C4	C5 min.	C5 max.	C6 min.	C6 max.	K1 for screw DIN 912
WS-10-40-ES-FG	120	20	79.5	20	79.5	M6

⁵⁷⁾ Height dimension minus the bearing clearance tolerance

Housing bearing round, made from of stainless steel V4A



Technical data and dimensions [mm]

Part No.	Weight [g]	B	C1	C3	A3	K2	K3	Stat. load capacity		
								Coz [N]	Coz+ [N]	Coz- [N]
WJUM-01-10-ES-FG ⁵⁹⁾	57	26	29	16	6.5	M6	M5	3,800	3,800	950
WJUM-01-16-ES-FG ⁵⁹⁾	134	34.5	36	18	9	M8	M6	6,900	6,900	1,450
WJUM-01-20-ES-FG ⁵⁹⁾	280	42.5	45	27	9	M8	M6	11,000	11,000	1,900
WJUM-01-25-ES ⁵⁹⁾	564	52.5	58	36	11	M10	M8	16,000	16,000	3,600

⁵⁹⁾ alternative with XUMO-01-... liners for high temperatures available. Part No. WXUM-01-...