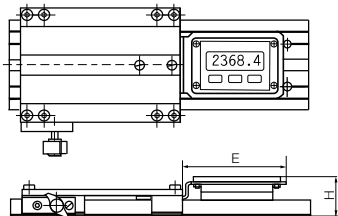


WKM, Series 10 and 20



- Lockable carriage
- Display optionally to the right (R) or left (L) of the guide carriage
- Max. rail length 4,000 mm (effective measuring length max. 3,757 mm)
- Technical data ► **Page 960**

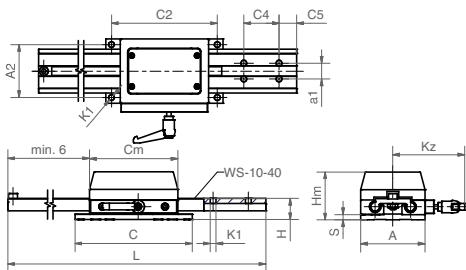


Dimensions [mm]

Part No.	drylin® linear profile ⁸⁹⁾	H	E
WKM-10-80-15-01-L	WK-10-80-15-01	36	93
WKM-10-80-15-01-R	WK-10-80-15-01	36	93
WKM-20-80-15-01-L	WK-20-80-15-01	40	93
WKM-20-80-15-01-R	WK-20-80-15-01	40	93

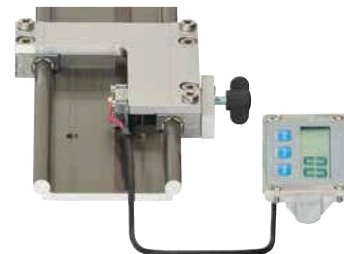
⁸⁹⁾ Profile dimensions ► **Page 785**

WKM, Series 11



Dimensions [mm]

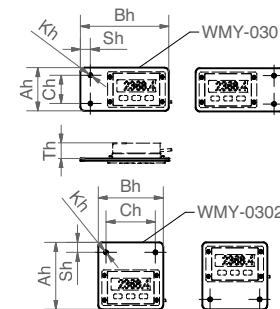
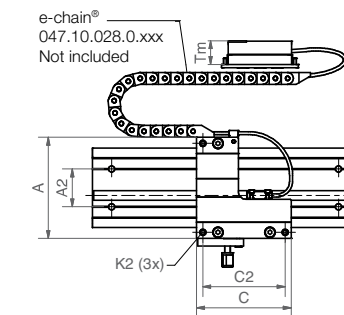
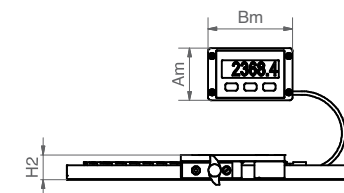
Part No.	L	C4	C5	a1	C2	A2	K1	C	A	H	S	Cm	Hm	kz
	max.													
WKM-11-40	2,000	40	20	18	120	60	6.6	133	73	24	6	100	54	82



Type Size

WKMEDR - 10-80-10

drylin® W measuring system	External display	Attached on the right	Installation size	Rail width	Rail length 100 mm
----------------------------	------------------	-----------------------	-------------------	------------	--------------------



Options

R = attachment to the right of the guide carriage

L = attachment to the left of the guide carriage

Options for attaching the external display

Dimensions [mm]

Part No.	A	C	A2	C2	K2	H2	Am	Bm	Tm
	Width	Length				±0.17			
WKMEDR(L) ⁹⁰⁾ -10-80-10-...	107	100	94	87	M6	24	82	51	25

⁹⁰⁾ Suitable for attachment on the right (R) or left (L)

Display dimensions [mm]

Part No.	Ah	Bh	Ch	Sh	Kh	Th
WMY-0301	61	125	40	14	ø5,4	22
WMY-0302	94,5	92	70	14	ø5,4	22